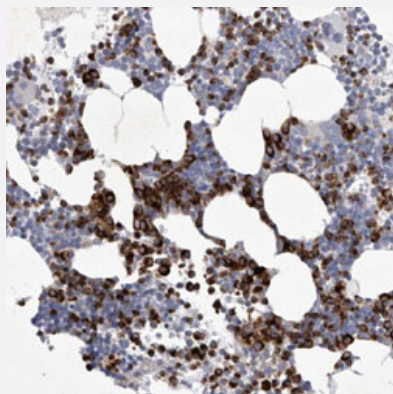


# SIGLEC10 polyclonal antibody

Catalog # PAB30969      Size 100 uL

## Applications



### Immunohistochemistry (Formalin/PFA-fixed paraffin-embedded sections)

Immunohistochemical staining (Formalin-fixed paraffin-embedded sections) of human bone marrow with SIGLEC10 polyclonal antibody (Cat # PAB30969) shows strong cytoplasmic positivity in subsets of cells.

## Specification

Product Description	Rabbit polyclonal antibody raised against partial recombinant human SIGLEC10.
Immunogen	Recombinant protein corresponding to human SIGLEC10.
Sequence	DGRFWIRVQESVMVPEGLCISVPCSFSPYRQDWTGSTPAYGYWFKAVTETTKGAPVATNHQSRE VEMSTRGRFQLTGDPKAGNCSLVIRDAQMQDESQY
Host	Rabbit
Reactivity	Human
Form	Liquid
Purification	Antigen affinity purification
Isotype	IgG
Recommend Usage	Immunohistochemistry (Formalin/PFA-fixed paraffin-embedded sections) (1:20-1:50) The optimal working dilution should be determined by the end user.
Storage Buffer	In PBS, pH 7.2 (40% glycerol, 0.02% sodium azide).

**Storage Instruction**

Store at 4°C. For long term storage store at -20°C.  
Aliquot to avoid repeated freezing and thawing.

**Note**

This product contains sodium azide: a POISONOUS AND HAZARDOUS SUBSTANCE which should be handled by trained staff only.

## Applications

- Immunohistochemistry (Formalin/PFA-fixed paraffin-embedded sections)

Immunohistochemical staining (Formalin-fixed paraffin-embedded sections) of human bone marrow with SIGLEC10 polyclonal antibody (Cat # PAB30969) shows strong cytoplasmic positivity in subsets of cells.

## Gene Info — SIGLEC10

**Entrez GeneID**[89790](#)**Protein Accession#**[Q96LC7](#)**Gene Name**

SIGLEC10

**Gene Alias**

MGC126774, PRO940, SIGLEC-10, SLG2

**Gene Description**

sialic acid binding Ig-like lectin 10

**Omim ID**[606091](#)**Gene Ontology**[Hyperlink](#)**Gene Summary**

SIGLECs are members of the immunoglobulin superfamily that are expressed on the cell surface. Most SIGLECs have 1 or more cytoplasmic immune receptor tyrosine-based inhibitory motifs, or ITIMs. SIGLECs are typically expressed on cells of the innate immune system, with the exception of the B-cell expressed SIGLEC6 (MIM 604405).[supplied by OMIM]

**Other Designations**

sialic acid binding Ig-like lectin 10 Ig-like lectin 7|siglec-like gene 2