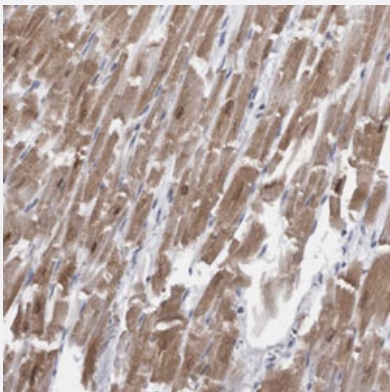


# CAMK2D polyclonal antibody

Catalog # PAB30957      Size 100 uL

## Applications



### Immunohistochemistry (Formalin/PFA-fixed paraffin-embedded sections)

Immunohistochemical staining (Formalin-fixed paraffin-embedded sections) of human cardiac muscle with CAMK2D polyclonal antibody (Cat # PAB30957) shows moderate cytoplasmic and nuclear positivity in myocytes.

## Specification

<b>Product Description</b>	Rabbit polyclonal antibody raised against partial recombinant human CAMK2D.
<b>Immunogen</b>	Recombinant protein corresponding to human CAMK2D.
<b>Sequence</b>	MDGSGMPKTMQSEETRVWHRRDGKWQNVHFHRSGSPTVPIKPPCIPNGKENFSGGTSWLQ
<b>Host</b>	Rabbit
<b>Reactivity</b>	Human
<b>Form</b>	Liquid
<b>Purification</b>	Antigen affinity purification
<b>Isotype</b>	IgG
<b>Recommend Usage</b>	Immunohistochemistry (Formalin/PFA-fixed paraffin-embedded sections) (1:20-1:50) The optimal working dilution should be determined by the end user.
<b>Storage Buffer</b>	In PBS, pH 7.2 (40% glycerol, 0.02% sodium azide).

**Storage Instruction**

Store at 4°C. For long term storage store at -20°C.  
Aliquot to avoid repeated freezing and thawing.

**Note**

This product contains sodium azide: a POISONOUS AND HAZARDOUS SUBSTANCE which should be handled by trained staff only.

## Applications

- Immunohistochemistry (Formalin/PFA-fixed paraffin-embedded sections)

Immunohistochemical staining (Formalin-fixed paraffin-embedded sections) of human cardiac muscle with CAMK2D polyclonal antibody (Cat # PAB30957) shows moderate cytoplasmic and nuclear positivity in myocytes.

## Gene Info — CAMK2D

**Entrez GeneID**[817](#)**Protein Accession#**[Q13557](#)**Gene Name**

CAMK2D

**Gene Alias**

CAMKD, DKFZp686G23119, DKFZp686I2288, MGC44911

**Gene Description**

calcium/calmodulin-dependent protein kinase II delta

**Omim ID**[607708](#)**Gene Ontology**[Hyperlink](#)**Gene Summary**

The product of this gene belongs to the serine/threonine protein kinase family and to the Ca(2+)/calmodulin-dependent protein kinase subfamily. Calcium signaling is crucial for several aspects of plasticity at glutamatergic synapses. In mammalian cells, the enzyme is composed of four different chains: alpha, beta, gamma, and delta. The product of this gene is a delta chain. Alternative splicing results in multiple transcript variants encoding distinct isoforms. Distinct isoforms of this chain have different expression patterns

**Other Designations**

CaM kinase II delta subunit|CaM-kinase II delta chain|CaMK-II delta subunit|OTTHUMP00000163829|OTTHUMP00000163830|calcium/calmodulin-dependent protein kinase (CaM kinase) II delta|calcium/calmodulin-dependent protein kinase type II delta chain

## Pathway

- [Calcium signaling pathway](#)
- [ErbB signaling pathway](#)

- [Glioma](#)
- [GnRH signaling pathway](#)
- [Long-term potentiation](#)
- [Melanogenesis](#)
- [Neurotrophin signaling pathway](#)
- [Olfactory transduction](#)
- [Wnt signaling pathway](#)

## Disease

- [Alcoholism](#)
- [Genetic Predisposition to Disease](#)
- [Mucocutaneous Lymph Node Syndrome](#)
- [Tobacco Use Disorder](#)