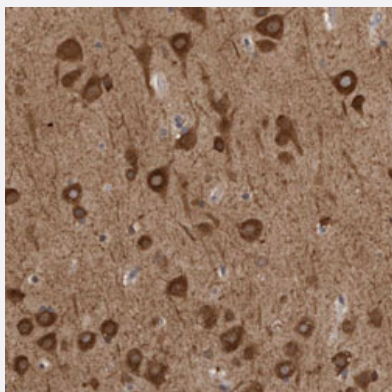


GPR61 polyclonal antibody

Catalog # PAB30956

Size 100 uL

Applications



Immunohistochemistry (Formalin/PFA-fixed paraffin-embedded sections)

Immunohistochemical staining (Formalin-fixed paraffin-embedded sections) of human cerebral cortex with GPR61 polyclonal antibody (Cat # PAB30956) shows strong cytoplasmic positivity in neuronal cells.

Specification

Product Description	Rabbit polyclonal antibody raised against partial recombinant human GPR61.
Immunogen	Recombinant protein corresponding to human GPR61.
Sequence	QFVCFKPAPEEELRLPSREGSIEENFLQLQGTGCPSESWVSRPLPSPKQEPPAVDFRIPGQIA EETSEFLEQQLTSDIIMSDSYLRPAASPRLES
Host	Rabbit
Reactivity	Human
Form	Liquid
Purification	Antigen affinity purification
Isotype	IgG
Recommend Usage	Immunohistochemistry (Formalin/PFA-fixed paraffin-embedded sections) (1:50-1:200) The optimal working dilution should be determined by the end user.
Storage Buffer	In PBS, pH 7.2 (40% glycerol, 0.02% sodium azide).

Storage Instruction

Store at 4°C. For long term storage store at -20°C.
Aliquot to avoid repeated freezing and thawing.

Note

This product contains sodium azide: a POISONOUS AND HAZARDOUS SUBSTANCE which should be handled by trained staff only.

Applications

- Immunohistochemistry (Formalin/PFA-fixed paraffin-embedded sections)

Immunohistochemical staining (Formalin-fixed paraffin-embedded sections) of human cerebral cortex with GPR61 polyclonal antibody (Cat # PAB30956) shows strong cytoplasmic positivity in neuronal cells.

Gene Info — GPR61

Entrez GeneID[83873](#)**Protein Accession#**[Q9BZJ8](#)**Gene Name**

GPR61

Gene Alias

BALGR, GPCR3

Gene Description

G protein-coupled receptor 61

Omim ID[606916](#)**Gene Ontology**[Hyperlink](#)**Gene Summary**

This gene belongs to the G-protein coupled receptor 1 family. G protein-coupled receptors contain 7 transmembrane domains and transduce extracellular signals through heterotrimeric G proteins. The protein encoded by this gene is most closely related to biogenic amine receptors. [provided by RefSeq]

Other Designations

OTTHUMP00000013345|biogenic amine receptor-like GPCR