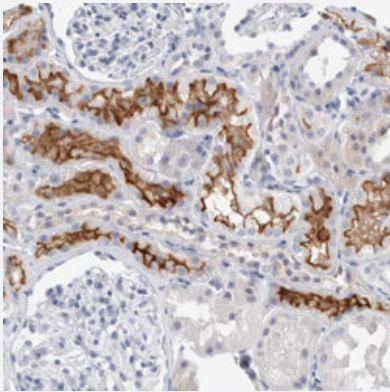


# SLC22A12 polyclonal antibody

Catalog # PAB30952      Size 100 uL

## Applications



### Immunohistochemistry (Formalin/PFA-fixed paraffin-embedded sections)

Immunohistochemical staining (Formalin-fixed paraffin-embedded sections) of human kidney with SLC22A12 polyclonal antibody (Cat # PAB30952) shows strong membranous positivity in cells in tubules.

## Specification

<b>Product Description</b>	Rabbit polyclonal antibody raised against partial recombinant human SLC22A12.
<b>Immunogen</b>	Recombinant protein corresponding to human SLC22A12.
<b>Sequence</b>	ESARWLLTTGRLDWGLQELWRVAAINGKGAVQDTLTPEVLLSAMREELSMGQPPASLGTLRRMPGLRFRTCI
<b>Host</b>	Rabbit
<b>Reactivity</b>	Human
<b>Form</b>	Liquid
<b>Purification</b>	Antigen affinity purification
<b>Isotype</b>	IgG
<b>Recommend Usage</b>	Immunohistochemistry (Formalin/PFA-fixed paraffin-embedded sections) (1:500-1:1000) The optimal working dilution should be determined by the end user.
<b>Storage Buffer</b>	In PBS, pH 7.2 (40% glycerol, 0.02% sodium azide).

**Storage Instruction**

Store at 4°C. For long term storage store at -20°C.  
Aliquot to avoid repeated freezing and thawing.

**Note**

This product contains sodium azide: a POISONOUS AND HAZARDOUS SUBSTANCE which should be handled by trained staff only.

## Applications

- Immunohistochemistry (Formalin/PFA-fixed paraffin-embedded sections)

Immunohistochemical staining (Formalin-fixed paraffin-embedded sections) of human kidney with SLC22A12 polyclonal antibody (Cat # PAB30952) shows strong membranous positivity in cells in tubules.

## Gene Info — SLC22A12

**Entrez GeneID** [116085](#)

**Protein Accession#** [Q96S37](#)

**Gene Name** SLC22A12

**Gene Alias** OAT4L, RST, URAT1

**Gene Description** solute carrier family 22 (organic anion/urate transporter), member 12

**Omim ID** [220150 607096](#)

**Gene Ontology** [Hyperlink](#)

**Gene Summary** The protein encoded by this gene is a urate transporter and urate-anion exchanger which regulate the level of urate in the blood. This protein is an integral membrane protein primarily found in kidney. Two transcript variants encoding different isoforms have been found for this gene. [provided by RefSeq]

**Other Designations** OTTHUMP00000042665|organic anion transporter 4-like|solute carrier family 22 (organic anion/cation transporter), member 12|solute carrier family 22 member 12|urate anion exchanger 1|urate transporter 1

## Disease

- [Coronary Artery Disease](#)
- [Genetic Predisposition to Disease](#)
- [Gout](#)

- [Hemochromatosis](#)
- [Hyperuricemia](#)
- [Iron Overload](#)
- [Kidney Diseases](#)