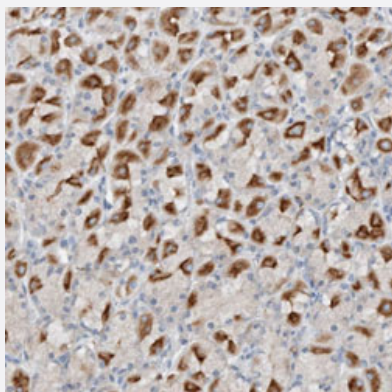


# DUOX1 polyclonal antibody

Catalog # PAB30938      Size 100 uL

## Applications



### Immunohistochemistry (Formalin/PFA-fixed paraffin-embedded sections)

Immunohistochemical staining (Formalin-fixed paraffin-embedded sections) of human stomach with DUOX1 polyclonal antibody (Cat # PAB30938) shows strong cytoplasmic positivity in parietal cells.

## Specification

Product Description	Rabbit polyclonal antibody raised against partial recombinant human DUOX1.
Immunogen	Recombinant protein corresponding to human DUOX1.
Sequence	QHKELTWEDFHFMLRDHNSLRFTQLCVKGVEVPEVIKDLRRASYISQDMICSPRV SARCSR SDIETELTPQRLQCPMDTDPPEIRRRFGKKVTSFQP
Host	Rabbit
Reactivity	Human
Form	Liquid
Purification	Antigen affinity purification
Isotype	IgG
Recommend Usage	Immunohistochemistry (Formalin/PFA-fixed paraffin-embedded sections) (1:20-1:50) The optimal working dilution should be determined by the end user.
Storage Buffer	In PBS, pH 7.2 (40% glycerol, 0.02% sodium azide).

**Storage Instruction**

Store at 4°C. For long term storage store at -20°C.  
Aliquot to avoid repeated freezing and thawing.

**Note**

This product contains sodium azide: a POISONOUS AND HAZARDOUS SUBSTANCE which should be handled by trained staff only.

## Applications

- Immunohistochemistry (Formalin/PFA-fixed paraffin-embedded sections)

Immunohistochemical staining (Formalin-fixed paraffin-embedded sections) of human stomach with DUOX1 polyclonal antibody (Cat # PAB30938) shows strong cytoplasmic positivity in parietal cells.

## Gene Info — DUOX1

**Entrez GeneID**[53905](#)**Protein Accession#**[Q9NRD9](#)**Gene Name**

DUOX1

**Gene Alias**

LNOX1, MGC138840, MGC138841, NOXEF1, THOX1

**Gene Description**

dual oxidase 1

**Omim ID**[606758](#)**Gene Ontology**[Hyperlink](#)**Gene Summary**

The protein encoded by this gene is a glycoprotein and a member of the NADPH oxidase family. The synthesis of thyroid hormone is catalyzed by a protein complex located at the apical membrane of thyroid follicular cells. This complex contains an iodide transporter, thyroperoxidase, and a peroxide generating system that includes this encoded protein and DUOX2. This protein is known as dual oxidase because it has both a peroxidase homology domain and a gp91phox domain. Two alternatively spliced transcript variants encoding the same protein have been described for this gene. [provided by RefSeq]

**Other Designations**

NADPH thyroid oxidase 1|flavoprotein NADPH oxidase|nicotinamide adenine dinucleotide phosphate oxidase

## Disease

- [Asthma](#)
- [Genetic Predisposition to Disease](#)

- [HIV Infections](#)
- [Liver Cirrhosis](#)
- [Lung Diseases](#)
- [Mycobacterium Infections](#)
- [Pneumonia](#)
- [Sarcoidosis](#)
- [Thyroid Neoplasms](#)
- [Tuberculosis](#)