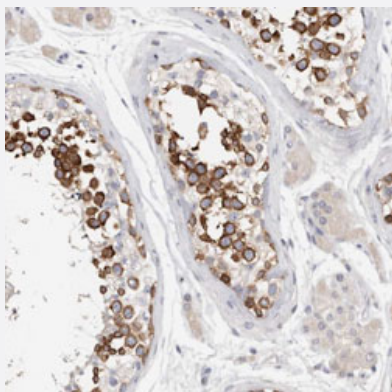


# STK31 polyclonal antibody

Catalog # PAB30934      Size 100 uL

## Applications



### Immunohistochemistry (Formalin/PFA-fixed paraffin-embedded sections)

Immunohistochemical staining (Formalin-fixed paraffin-embedded sections) of human testis with STK31 polyclonal antibody (Cat # PAB30934) shows strong cytoplasmic positivity in developing sperm cells.

## Specification

<b>Product Description</b>	Rabbit polyclonal antibody raised against partial recombinant human STK31.
<b>Immunogen</b>	Recombinant protein corresponding to human STK31.
<b>Sequence</b>	HEREEYEMLTSLAQKWFPELPLLHPEIGLLKYMNSGGLLTMSLERDLLDAEPMKELSSKRPLVRS EVNGQIILLKGYSVDVDTEAKVIERAATYHRAWREAEGDSGLLPLIF
<b>Host</b>	Rabbit
<b>Reactivity</b>	Human
<b>Form</b>	Liquid
<b>Purification</b>	Antigen affinity purification
<b>Isotype</b>	IgG
<b>Recommend Usage</b>	Immunohistochemistry (Formalin/PFA-fixed paraffin-embedded sections) (1:50-1:200) The optimal working dilution should be determined by the end user.
<b>Storage Buffer</b>	In PBS, pH 7.2 (40% glycerol, 0.02% sodium azide).

**Storage Instruction**

Store at 4°C. For long term storage store at -20°C.  
Aliquot to avoid repeated freezing and thawing.

**Note**

This product contains sodium azide: a POISONOUS AND HAZARDOUS SUBSTANCE which should be handled by trained staff only.

## Applications

- Immunohistochemistry (Formalin/PFA-fixed paraffin-embedded sections)

Immunohistochemical staining (Formalin-fixed paraffin-embedded sections) of human testis with STK31 polyclonal antibody (Cat # PAB30934) shows strong cytoplasmic positivity in developing sperm cells.

## Gene Info — STK31

**Entrez GeneID**[56164](#)**Protein Accession#**[Q9BXU1](#)**Gene Name**

STK31

**Gene Alias**

FLJ16102, SGK396, TDRD8

**Gene Description**

serine/threonine kinase 31

**Omim ID**[605790](#)**Gene Ontology**[Hyperlink](#)**Gene Summary**

This gene is similar to a mouse gene that encodes a putative protein kinase with a tudor domain, and shows testis-specific expression. Alternative splicing results in multiple transcript variants encoding different isoforms. [provided by RefSeq]

**Other Designations**

sugen kinase 396|tudor domain containing 8

## Disease

- [Kidney Failure](#)
- [Tobacco Use Disorder](#)