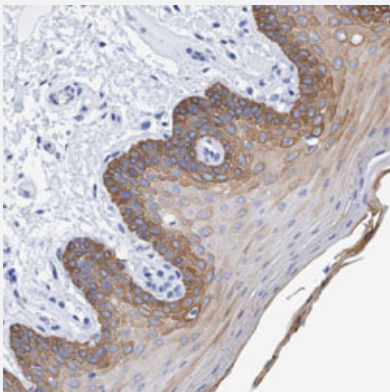


KRT14 polyclonal antibody

Catalog # PAB30932 Size 100 uL

Applications



Immunohistochemistry (Formalin/PFA-fixed paraffin-embedded sections)

Immunohistochemical staining (Formalin-fixed paraffin-embedded sections) of human oral mucosa with KRT14 polyclonal antibody (Cat # PAB30932) shows strong positivity in basal squamous epithelial cells.

Specification

Product Description	Rabbit polyclonal antibody raised against partial recombinant human KRT14.
Immunogen	Recombinant protein corresponding to human KRT14.
Sequence	TYRRLLEGEDAHLSSSQFSSGSQSSRDVTSSSRQIRTKVMDVHDGKVVSTHEQVLRTKN
Host	Rabbit
Reactivity	Human
Form	Liquid
Purification	Antigen affinity purification
Isotype	IgG
Recommend Usage	Immunohistochemistry (Formalin/PFA-fixed paraffin-embedded sections) (1:1000-1:2500) The optimal working dilution should be determined by the end user.
Storage Buffer	In PBS, pH 7.2 (40% glycerol, 0.02% sodium azide).

Storage Instruction

Store at 4°C. For long term storage store at -20°C.
Aliquot to avoid repeated freezing and thawing.

Note

This product contains sodium azide: a POISONOUS AND HAZARDOUS SUBSTANCE which should be handled by trained staff only.

Applications

- Immunohistochemistry (Formalin/PFA-fixed paraffin-embedded sections)

Immunohistochemical staining (Formalin-fixed paraffin-embedded sections) of human oral mucosa with KRT14 polyclonal antibody (Cat # PAB30932) shows strong positivity in basal squamous epithelial cells.

Gene Info — KRT14

Entrez GeneID[3861](#)**Protein Accession#**[P02533](#)**Gene Name**

KRT14

Gene Alias

CK14, EBS3, EBS4, K14, NFJ

Gene Description

keratin 14

Omim ID[125595](#) [131800](#) [148066](#) [161000](#) [601001](#)**Gene Ontology**[Hyperlink](#)**Gene Summary**

This gene encodes a member of the keratin family, the most diverse group of intermediate filaments. This gene product, a type I keratin, is usually found as a heterotetramer with two keratin 5 molecules, a type II keratin. Together they form the cytoskeleton of epithelial cells. Mutations in the genes for these keratins are associated with epidermolysis bullosa simplex. At least one pseudogene has been identified at 17p12-p11. [provided by RefSeq]

Other Designations

cytokeratin 14|keratin 14 (epidermolysis bullosa simplex, Dowling-Meara, Koebner)

Disease

- [Cleft Lip](#)
- [Cleft Palate](#)