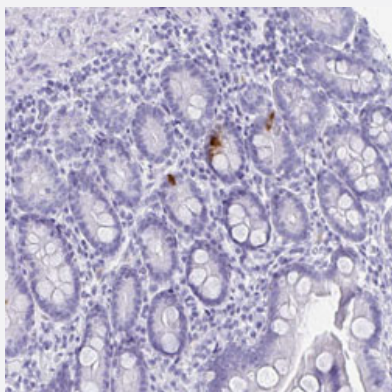


GIP polyclonal antibody

Catalog # PAB30925

Size 100 uL

Applications



Immunohistochemistry (Formalin/PFA-fixed paraffin-embedded sections)

Immunohistochemical staining (Formalin-fixed paraffin-embedded sections) of human small intestine with GIP polyclonal antibody (Cat # PAB30925) shows strong cytoplasmic positivity in a subset of glandular cells.

Specification

Product Description	Rabbit polyclonal antibody raised against partial recombinant human GIP.
Immunogen	Recombinant protein corresponding to human GIP.
Sequence	KKEGHFSALPSLPVGSHAKVSSPQPRGPYAEGTFISDYSIAMDKIHQQDFVNWLLAQKGKKND
Host	Rabbit
Reactivity	Human
Form	Liquid
Purification	Antigen affinity purification
Isotype	IgG
Recommend Usage	Immunohistochemistry (Formalin/PFA-fixed paraffin-embedded sections) (1:200-1:500) The optimal working dilution should be determined by the end user.
Storage Buffer	In PBS, pH 7.2 (40% glycerol, 0.02% sodium azide).

Storage Instruction

Store at 4°C. For long term storage store at -20°C.
Aliquot to avoid repeated freezing and thawing.

Note

This product contains sodium azide: a POISONOUS AND HAZARDOUS SUBSTANCE which should be handled by trained staff only.

Applications

- Immunohistochemistry (Formalin/PFA-fixed paraffin-embedded sections)

Immunohistochemical staining (Formalin-fixed paraffin-embedded sections) of human small intestine with GIP polyclonal antibody (Cat # PAB30925) shows strong cytoplasmic positivity in a subset of glandular cells.

Gene Info — GIP

Entrez GeneID[2695](#)**Protein Accession#**[P09681](#)**Gene Name**

GIP

Gene Alias

-

Gene Description

gastric inhibitory polypeptide

Omim ID[137240](#)**Gene Ontology**[Hyperlink](#)**Gene Summary**

This gene encodes an incretin hormone and belongs to the glucagon superfamily. The encoded protein is important in maintaining glucose homeostasis as it is a potent stimulator of insulin secretion from pancreatic beta-cells following food ingestion and nutrient absorption. This gene stimulates insulin secretion via its G protein-coupled receptor activation of adenylyl cyclase and other signal transduction pathways. It is a relatively poor inhibitor of gastric acid secretion. [provided by RefSeq]

Other Designations

glucose-dependent insulinotropic polypeptide

Pathway

- [Neuroactive ligand-receptor interaction](#)

Disease

- [Anorexia Nervosa](#)
- [Bulimia](#)
- [Cardiovascular Diseases](#)
- [Diabetes Mellitus](#)
- [Genetic Predisposition to Disease](#)
- [Hyperparathyroidism](#)
- [Metabolic Syndrome X](#)