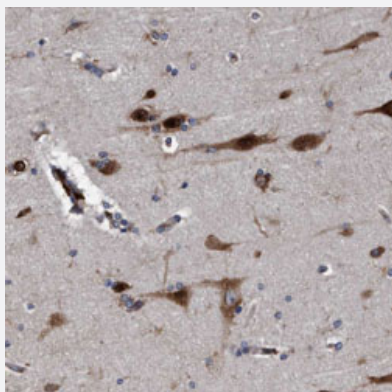


ENDOG polyclonal antibody

Catalog # PAB30922 Size 100 uL

Applications



Immunohistochemistry (Formalin/PFA-fixed paraffin-embedded sections)

Immunohistochemical staining (Formalin-fixed paraffin-embedded sections) of human cerebral cortex with ENDOG polyclonal antibody (Cat # PAB30922) shows strong cytoplasmic and nuclear positivity in neuronal cells and glial cells.

Specification

Product Description	Rabbit polyclonal antibody raised against partial recombinant human ENDOG.
Immunogen	Recombinant protein corresponding to human ENDOG.
Sequence	QVIGKNHVAVPTHFFKVLILEAAGGQIELRTYVMPNAPVDEAIPLERFLVPIESIERASGLLFVPNILA RAGSLKAITAGSK
Host	Rabbit
Reactivity	Human
Form	Liquid
Purification	Antigen affinity purification
Isotype	IgG
Recommend Usage	Immunohistochemistry (Formalin/PFA-fixed paraffin-embedded sections) (1:20-1:50) The optimal working dilution should be determined by the end user.
Storage Buffer	In PBS, pH 7.2 (40% glycerol, 0.02% sodium azide).

Storage Instruction

Store at 4°C. For long term storage store at -20°C.
Aliquot to avoid repeated freezing and thawing.

Note

This product contains sodium azide: a POISONOUS AND HAZARDOUS SUBSTANCE which should be handled by trained staff only.

Applications

- Immunohistochemistry (Formalin/PFA-fixed paraffin-embedded sections)

Immunohistochemical staining (Formalin-fixed paraffin-embedded sections) of human cerebral cortex with ENDOG polyclonal antibody (Cat # PAB30922) shows strong cytoplasmic and nuclear positivity in neuronal cells and glial cells.

Gene Info — ENDOG

Entrez GeneID [2021](#)

Protein Accession# [Q14249](#)

Gene Name ENDOG

Gene Alias FLJ27463

Gene Description endonuclease G

Omim ID [600440](#)

Gene Ontology [Hyperlink](#)

Gene Summary The protein encoded by this gene is a nuclear encoded endonuclease that is localized in the mitochondrion. The encoded protein is widely distributed among animals and cleaves DNA at GC tracts. This protein is capable of generating the RNA primers required by DNA polymerase gamma to initiate replication of mitochondrial DNA. [provided by RefSeq]

Other Designations OTTHUMP00000022301

Pathway

- [Apoptosis](#)