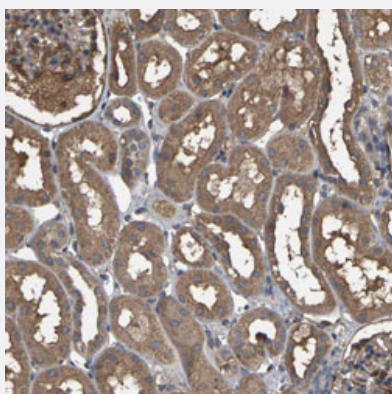


HTRA3 polyclonal antibody

Catalog # PAB30921 Size 100 uL

Applications



Immunohistochemistry (Formalin/PFA-fixed paraffin-embedded sections)

Immunohistochemical staining (Formalin-fixed paraffin-embedded sections) of human kidney with HTRA3 polyclonal antibody (Cat # PAB30921) shows moderate cytoplasmic positivity in cells in tubules.

Specification

Product Description	Rabbit polyclonal antibody raised against partial recombinant human HTRA3.
Immunogen	Recombinant protein corresponding to human HTRA3.
Sequence	ITRFLTEFQDKQIKDWKKRFIGIRMRTITPSLVDELKASNPDFPEVSSGIYQEVAPNSPSQRGGIQD GDIIVKVNGRPLVDSSSELQEAVLTESPLLLLEVRRGNDDLLFSIAP
Host	Rabbit
Reactivity	Human
Form	Liquid
Purification	Antigen affinity purification
Isotype	IgG
Recommend Usage	Immunohistochemistry (Formalin/PFA-fixed paraffin-embedded sections) (1:200-1:500) The optimal working dilution should be determined by the end user.
Storage Buffer	In PBS, pH 7.2 (40% glycerol, 0.02% sodium azide).

Storage Instruction

Store at 4°C. For long term storage store at -20°C.
Aliquot to avoid repeated freezing and thawing.

Note

This product contains sodium azide: a POISONOUS AND HAZARDOUS SUBSTANCE which should be handled by trained staff only.

Applications

- Immunohistochemistry (Formalin/PFA-fixed paraffin-embedded sections)

Immunohistochemical staining (Formalin-fixed paraffin-embedded sections) of human kidney with HTRA3 polyclonal antibody (Cat # PAB30921) shows moderate cytoplasmic positivity in cells in tubules.

Gene Info — HTRA3

Entrez GeneID[94031](#)**Protein Accession#**[P83110](#)**Gene Name**

HTRA3

Gene Alias

Prsp, Tasp

Gene Description

HtrA serine peptidase 3

Omim ID[608785](#)**Gene Ontology**[Hyperlink](#)**Other Designations**

OTTHUMP00000115666|pregnancy-related serine protease|serine protease HTRA3

Disease

- [Tobacco Use Disorder](#)