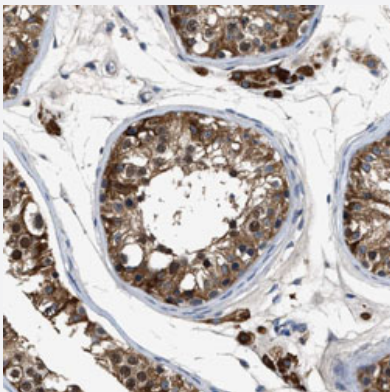


INHA polyclonal antibody

Catalog # PAB30907 Size 100 uL

Applications



Immunohistochemistry (Formalin/PFA-fixed paraffin-embedded sections)

Immunohistochemical staining (Formalin-fixed paraffin-embedded sections) of human testis with INHA polyclonal antibody (Cat # PAB30907) shows distinct positivity in cells of seminiferous ducts.

Specification

Product Description	Rabbit polyclonal antibody raised against partial recombinant human INHA.
Immunogen	Recombinant protein corresponding to human INHA.
Sequence	QEAEGLFRYMFRRPSQHTRSRQVTSACLWFHTGLDRQGTAASNSSEPLLGLLALSPGGPVAVP MSLGHAPPHWAVLHLAT
Host	Rabbit
Reactivity	Human
Form	Liquid
Purification	Antigen affinity purification
Isotype	IgG
Recommend Usage	Immunohistochemistry (Formalin/PFA-fixed paraffin-embedded sections) (1:50-1:200) The optimal working dilution should be determined by the end user.
Storage Buffer	In PBS, pH 7.2 (40% glycerol, 0.02% sodium azide).

Storage Instruction

Store at 4°C. For long term storage store at -20°C.
Aliquot to avoid repeated freezing and thawing.

Note

This product contains sodium azide: a POISONOUS AND HAZARDOUS SUBSTANCE which should be handled by trained staff only.

Applications

- Immunohistochemistry (Formalin/PFA-fixed paraffin-embedded sections)

Immunohistochemical staining (Formalin-fixed paraffin-embedded sections) of human testis with INHA polyclonal antibody (Cat # PAB30907) shows distinct positivity in cells of seminiferous ducts.

Gene Info — INHA

Entrez GeneID[3623](#)**Protein Accession#**[P05111](#)**Gene Name**

INHA

Gene Alias

-

Gene Description

inhibin, alpha

Omim ID[147380](#)**Gene Ontology**[Hyperlink](#)**Gene Summary**

The inhibin alpha subunit joins either the beta A or beta B subunit to form a pituitary FSH secretion inhibitor. Inhibin has been shown to regulate gonadal stromal cell proliferation negatively and to have tumour-suppressor activity. In addition, serum levels of inhibin have been shown to reflect the size of granulosa-cell tumors and can therefore be used as a marker for primary as well as recurrent disease. However, in prostate cancer, expression of the inhibin alpha-subunit gene was suppressed and was not detectable in poorly differentiated tumor cells. Furthermore, because expression in gonadal and various extragonadal tissues may vary severalfold in a tissue-specific fashion, it is proposed that inhibin may be both a growth/differentiation factor and a hormone. [provided by RefSeq]

Other Designations

A-inhibin subunit|inhibin alpha subunit

Disease

- [Abortion](#)

- [Amenorrhea](#)
- [Breast Neoplasms](#)
- [Disease Models](#)
- [Fragile X syndrome](#)
- [Genetic Predisposition to Disease](#)
- [Infertility](#)
- [Neoplasms](#)
- [Obesity](#)
- [Ovarian cancer](#)
- [Ovarian Failure](#)
- [Ovarian Neoplasms](#)
- [Polycystic Ovary Syndrome](#)
- [Pre-Eclampsia](#)
- [Prostate cancer](#)
- [Prostatic Neoplasms](#)
- [Puberty](#)
- [Testicular Neoplasms](#)
- [Thrombophilia](#)
- [Tobacco Use Disorder](#)