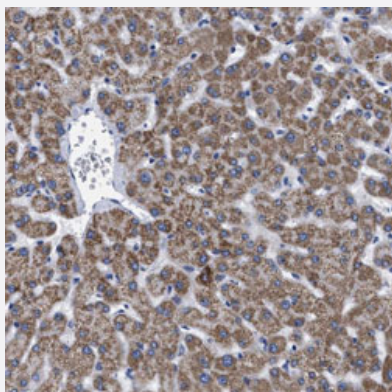


# GPR149 polyclonal antibody

Catalog # PAB30897      Size 100 uL

## Applications



### Immunohistochemistry (Formalin/PFA-fixed paraffin-embedded sections)

Immunohistochemical staining (Formalin-fixed paraffin-embedded sections) of human liver with GPR149 polyclonal antibody (Cat # PAB30897) shows moderate cytoplasmic positivity in hepatocytes.

## Specification

Product Description	Rabbit polyclonal antibody raised against partial recombinant human GPR149.
Immunogen	Recombinant protein corresponding to human GPR149.
Sequence	CGCIINCRQNAYAVASDGKKIKRKGFEFNLSFQKSYGYKIAHEDYYDDDENSIYHNLNMNSECETT KDPQRDNRNIFNAIKVEISTTPSLDSSTQRGINKCTNTDITEAKQDSNNKKDAFSDKTGGDINYEETT FSEGPERRLSH
Host	Rabbit
Reactivity	Human
Form	Liquid
Purification	Antigen affinity purification
Isotype	IgG
Recommend Usage	Immunohistochemistry (Formalin/PFA-fixed paraffin-embedded sections) (1:50-1:200) The optimal working dilution should be determined by the end user.

<b>Storage Buffer</b>	In PBS, pH 7.2 (40% glycerol, 0.02% sodium azide).
<b>Storage Instruction</b>	Store at 4°C. For long term storage store at -20°C. Aliquot to avoid repeated freezing and thawing.
<b>Note</b>	This product contains sodium azide: a POISONOUS AND HAZARDOUS SUBSTANCE which should be handled by trained staff only.

## Applications

- Immunohistochemistry (Formalin/PFA-fixed paraffin-embedded sections)

Immunohistochemical staining (Formalin-fixed paraffin-embedded sections) of human liver with GPR149 polyclonal antibody (Cat # PAB30897) shows moderate cytoplasmic positivity in hepatocytes.

## Gene Info — GPR149

<b>Entrez GeneID</b>	<a href="#">344758</a>
<b>Protein Accession#</b>	<a href="#">Q86SP6</a>
<b>Gene Name</b>	GPR149
<b>Gene Alias</b>	IEDA, PGR10
<b>Gene Description</b>	G protein-coupled receptor 149
<b>Gene Ontology</b>	<a href="#">Hyperlink</a>
<b>Other Designations</b>	G protein-coupled receptor PGR10

## Disease

- [Tobacco Use Disorder](#)