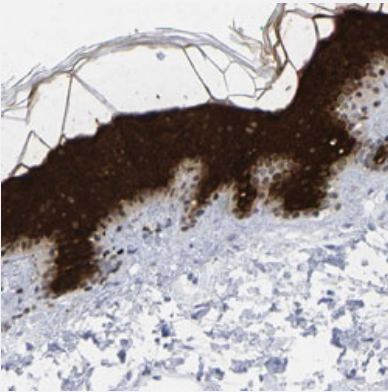


# KRT1 polyclonal antibody

Catalog # PAB30894      Size 100 uL

## Applications



### Immunohistochemistry (Formalin/PFA-fixed paraffin-embedded sections)

Immunohistochemical staining (Formalin-fixed paraffin-embedded sections) of human skin with KRT1 polyclonal antibody (Cat # PAB30894) shows strong cytoplasmic positivity in epidermal cells.

## Specification

<b>Product Description</b>	Rabbit polyclonal antibody raised against partial recombinant human KRT1.
<b>Immunogen</b>	Recombinant protein corresponding to human KRT1.
<b>Sequence</b>	MSRQFSSRSGYRSGGGFSSGSAGIINYQRRRTSSSTRRSGGGGGRFSSCGGGGGSFGA
<b>Host</b>	Rabbit
<b>Reactivity</b>	Human
<b>Form</b>	Liquid
<b>Purification</b>	Antigen affinity purification
<b>Isotype</b>	IgG
<b>Recommend Usage</b>	Immunohistochemistry (Formalin/PFA-fixed paraffin-embedded sections) (1:200-1:500) The optimal working dilution should be determined by the end user.
<b>Storage Buffer</b>	In PBS, pH 7.2 (40% glycerol, 0.02% sodium azide).

**Storage Instruction**

Store at 4°C. For long term storage store at -20°C.  
Aliquot to avoid repeated freezing and thawing.

**Note**

This product contains sodium azide: a POISONOUS AND HAZARDOUS SUBSTANCE which should be handled by trained staff only.

## Applications

- Immunohistochemistry (Formalin/PFA-fixed paraffin-embedded sections)

Immunohistochemical staining (Formalin-fixed paraffin-embedded sections) of human skin with KRT1 polyclonal antibody (Cat # PAB30894) shows strong cytoplasmic positivity in epidermal cells.

## Gene Info — KRT1

**Entrez GeneID**[3848](#)**Protein Accession#**[P04264](#)**Gene Name**

KRT1

**Gene Alias**

CK1, EHK1, K1, KRT1A

**Gene Description**

keratin 1

**Omim ID**[113800](#) [139350](#) [146590](#) [148700](#) [600962](#) [607602](#) [607654](#)**Gene Ontology**[Hyperlink](#)**Gene Summary**

The protein encoded by this gene is a member of the keratin gene family. The type II cytokeratins consist of basic or neutral proteins which are arranged in pairs of heterotypic keratin chains coexpressed during differentiation of simple and stratified epithelial tissues. This type II cytokeratin is specifically expressed in the spinous and granular layers of the epidermis with family member KRT10 and mutations in these genes have been associated with bullous congenital ichthyosiform erythroderma. The type II cytokeratins are clustered in a region of chromosome 12q12-q13. [provided by RefSeq]

**Other Designations**

cytokeratin 1|epidermolytic hyperkeratosis 1|hair alpha protein|keratin, type II cytoskeletal 1

## Publication Reference

- [SpyAD, a moonlighting protein of group A Streptococcus contributing to bacterial division and host cell adhesion.](#)

Gallotta M, Gancitano G, Pietrocola G, Mora M, Pezzicoli A, Tuscano G, Chiarot E, Nardi-Dei V, Taddei AR, Rindi S, Speziale P, Soriani M, Grandi G, Margarit I, Bensi G.

Infection and Immunity 2014 Jul; 82(7):2890.

Application: Flow Cyt, WB-Re, Human, A-549 cells, Detroit cells, HEK 293 cells, HeLa cells, LLCMK2 cells, ME180 cells, Recombinant proteins

- [Antibodies biotinylated using a synthetic Z-domain from protein A provide stringent in situ protein detection.](#)

Andersson S, Konrad A, Ashok N, Pontén F, Hober S, Asplund A.

The Journal of Histochemistry and Cytochemistry 2013 Nov; 61(11):773.

Application: IHC-P, Human, Skin, Tonsil