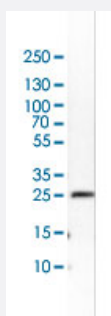


SNRPB polyclonal antibody

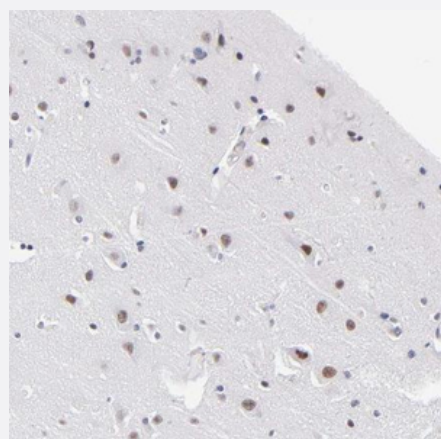
Catalog # PAB30861 Size 100 uL

Applications



Western Blot (Cell lysate)

Western Blot (Cell lysate) analysis of human NTERA-2 cell.



Immunohistochemistry (Formalin/PFA-fixed paraffin-embedded sections)

Immunohistochemical staining (Formalin-fixed paraffin-embedded sections) of human lateral ventricle shows strong nuclear positivity in neuronal cells and glial cells.

Specification

Product Description	Rabbit polyclonal antibody raised against partial recombinant human SNRPB.
Immunogen	Recombinant protein corresponding to human SNRPB.
Sequence	TFKAFDKHMNLILCDCDEFRIKPKNAKQPEREEKRVLGLVLLRGENLVSMTEGPPPKDTGIAR VPLAGAAGGPGVGRAAGRGVPAGVPIPQ
Host	Rabbit
Reactivity	Human, Mouse, Rat

Form	Liquid
Purification	Affinity purification
Isotype	IgG
Recommend Usage	Immunohistochemistry (Formalin/PFA-fixed paraffin-embedded sections) (1:20-50) Western Blot (1:100-250) The optimal working dilution should be determined by the end user.
Storage Buffer	In PBS, pH 7.2 (40% glycerol, 0.02% sodium azide).
Storage Instruction	Store at 4°C. For long term storage store at -20°C. Aliquot to avoid repeated freezing and thawing.
Note	This product contains sodium azide: a POISONOUS AND HAZARDOUS SUBSTANCE which should be handled by trained staff only.

Applications

- Western Blot (Cell lysate)

Western Blot (Cell lysate) analysis of human NTERA-2 cell.

- Immunohistochemistry (Formalin/PFA-fixed paraffin-embedded sections)

Immunohistochemical staining (Formalin-fixed paraffin-embedded sections) of human lateral ventricle shows strong nuclear positivity in neuronal cells and glial cells.

Gene Info — SNRPB

Entrez GeneID	6628
Protein Accession#	P14678
Gene Name	SNRPB
Gene Alias	COD, SNRPB1, SmB/SmB', snRNP-B
Gene Description	small nuclear ribonucleoprotein polypeptides B and B1
Omim ID	182282
Gene Ontology	Hyperlink

Gene Summary

The protein encoded by this gene is one of several nuclear proteins that are found in common among U1, U2, U4/U6, and U5 small ribonucleoprotein particles (snRNPs). These snRNPs are involved in pre-mRNA splicing, and the encoded protein may also play a role in pre-mRNA splicing or snRNP structure. Autoantibodies from patients with systemic lupus erythematosus frequently recognize epitopes on the encoded protein. Two transcript variants encoding different isoforms (B and B') have been found for this gene. [provided by RefSeq]

Other Designations

B polypeptide of Sm protein|OTTHUMP00000030012|OTTHUMP00000030013|Sm protein B/B'|small nuclear ribonucleoprotein polypeptide B|small nuclear ribonucleoprotein polypeptide B/B'|small nuclear ribonucleoprotein polypeptides B and B'

Pathway

- [Systemic lupus erythematosus](#)

Disease

- [Breast Neoplasms](#)
- [Carcinoma](#)
- [Genetic Predisposition to Disease](#)