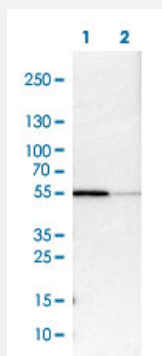


# SEPT6 polyclonal antibody

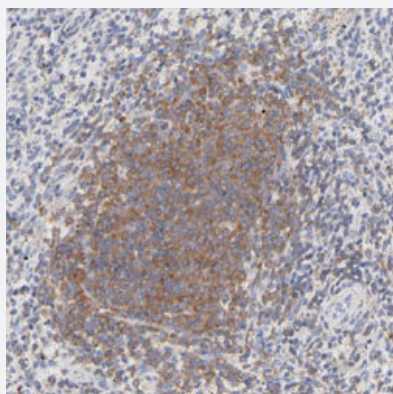
Catalog # PAB30860      Size 100 uL

## Applications



### Western Blot (Cell lysate)

Western Blot (Cell lysate) analysis of (1) NIH-3T3 cell lysate (Mouse embryonic fibroblast cells) and (2) NBT-II cell lysate (Rat Wistar bladder tumour cells).



### Immunohistochemistry (Formalin/PFA-fixed paraffin-embedded sections)

Immunohistochemical staining (Formalin-fixed paraffin-embedded sections) of human spleen shows moderate cytoplasmic positivity in cells in white pulp.

## Specification

<b>Product Description</b>	Rabbit polyclonal antibody raised against partial recombinant human SEPT6.
<b>Immunogen</b>	Recombinant protein corresponding to human SEPT6.
<b>Sequence</b>	KSTSQGFCFNILCVGETGIGKSTLMDTLFNTKFESDPATHNEPGVRLKARSYELQESNVRLKLTIV DTVGFQDQINKDDSYKPVEYIDAQ
<b>Host</b>	Rabbit
<b>Reactivity</b>	Human, Mouse, Rat

Form	Liquid
Purification	Affinity purification
Isotype	IgG
Recommend Usage	Immunohistochemistry (Formalin/PFA-fixed paraffin-embedded sections) (1:50-200) Western Blot (1:100-250) The optimal working dilution should be determined by the end user.
Storage Buffer	In PBS, pH 7.2 (40% glycerol, 0.02% sodium azide).
Storage Instruction	Store at 4°C. For long term storage store at -20°C. Aliquot to avoid repeated freezing and thawing.
Note	This product contains sodium azide: a POISONOUS AND HAZARDOUS SUBSTANCE which should be handled by trained staff only.

## Applications

- Western Blot (Cell lysate)

Western Blot (Cell lysate) analysis of (1) NIH-3T3 cell lysate (Mouse embryonic fibroblast cells) and (2) NBT-II cell lysate (Rat Wistar bladder tumour cells).

- Immunohistochemistry (Formalin/PFA-fixed paraffin-embedded sections)

Immunohistochemical staining (Formalin-fixed paraffin-embedded sections) of human spleen shows moderate cytoplasmic positivity in cells in white pulp.

## Gene Info — SEPT6

Entrez GeneID	<a href="#">23157</a>
Protein Accession#	<a href="#">Q14141</a>
Gene Name	SEPT6
Gene Alias	KIAA0128, MGC16619, MGC20339, SEP2, SEPT2
Gene Description	sepin 6
Omim ID	<a href="#">300683</a>
Gene Ontology	<a href="#">Hyperlink</a>

**Gene Summary**

This gene is a member of the septin family of GTPases. Members of this family are required for cytokinesis. One version of pediatric acute myeloid leukemia is the result of a reciprocal translocation between chromosomes 11 and X, with the breakpoint associated with the genes encoding the mixed-lineage leukemia and septin 2 proteins. This gene encodes four transcript variants encoding three distinct isoforms. An additional transcript variant has been identified, but its biological validity has not been determined. [provided by RefSeq]

**Other Designations**

OTTHUMP00000023916|OTTHUMP00000023918|OTTHUMP00000023921|septin 2