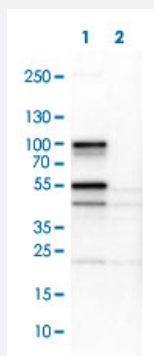


SH3KBP1 polyclonal antibody

Catalog # PAB30855

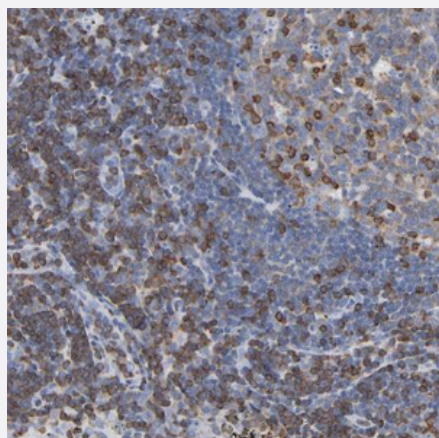
Size 100 uL

Applications



Western Blot (Cell lysate)

Western Blot (Cell lysate) analysis of (1) NIH-3T3 cell lysate (Mouse embryonic fibroblast cells) and (2) NBT-II cell lysate (Rat Wistar bladder tumour cells).



Immunohistochemistry (Formalin/PFA-fixed paraffin-embedded sections)

Immunohistochemical staining (Formalin-fixed paraffin-embedded sections) of human lymph node shows strong cytoplasmic positivity in lymphoid cells.

Specification

Product Description

Rabbit polyclonal antibody raised against partial recombinant human SH3KBP1.

Immunogen

Recombinant protein corresponding to human SH3KBP1.

Sequence

GDSPKIDLAGSSLSGILDKDLSDRSNDIDLEGFDSVVSSTEKLSHPTTSRPKATGRRPPSQSLTSS
SLSSPDIFDSPSPEEDKEEHISLAHRGVDASKKTSKTVTISQVSDNKASLP

Host

Rabbit

Reactivity	Human, Mouse
Form	Liquid
Purification	Affinity purification
Isotype	IgG
Recommend Usage	Immunohistochemistry (Formalin/PFA-fixed paraffin-embedded sections) (1:500-1000) Western Blot (1:100-250) The optimal working dilution should be determined by the end user.
Storage Buffer	In PBS, pH 7.2 (40% glycerol, 0.02% sodium azide).
Storage Instruction	Store at 4°C. For long term storage store at -20°C. Aliquot to avoid repeated freezing and thawing.
Note	This product contains sodium azide: a POISONOUS AND HAZARDOUS SUBSTANCE which should be handled by trained staff only.

Applications

- Western Blot (Cell lysate)

Western Blot (Cell lysate) analysis of (1) NIH-3T3 cell lysate (Mouse embryonic fibroblast cells) and (2) NBT-II cell lysate (Rat Wistar bladder tumour cells).

- Immunohistochemistry (Formalin/PFA-fixed paraffin-embedded sections)

Immunohistochemical staining (Formalin-fixed paraffin-embedded sections) of human lymph node shows strong cytoplasmic positivity in lymphoid cells.

Gene Info — SH3KBP1

Entrez GeneID	30011
GeneBank Accession#	Q96B97
Gene Name	SH3KBP1
Gene Alias	CIN85, GIG10, MIG18
Gene Description	SH3-domain kinase binding protein 1
Omim ID	300374
Gene Ontology	Hyperlink

Gene Summary

CBL (MIM 165360) constitutively interacts with SH3 domain-containing proteins and, upon tyrosine phosphorylation, with SH2 domain-containing proteins. The SH3KBP1 gene encodes an 85-kD CBL-interacting protein that enhances tumor necrosis factor (MIM 191160)-mediated apoptotic cell death (Narita et al., 2001 [PubMed 11474197]).[supplied by OMIM]

Other Designations

OTTHUMP00000023022|OTTHUMP00000023024|OTTHUMP00000061480|c-Cbl-interacting protein|migration-inducing gene 18 protein

Pathway

- [Endocytosis](#)