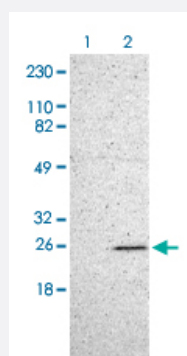


# MAD2L1 polyclonal antibody

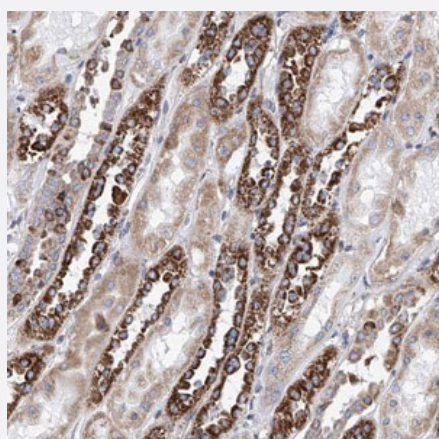
Catalog # PAB30854      Size 100 uL

## Applications



### Western Blot (Cell lysate)

Western Blot (Cell lysate) analysis of (1) Human RT-4 cell and (2) Human U-251MG sp cell.



### Immunohistochemistry (Formalin/PFA-fixed paraffin-embedded sections)

Immunohistochemical staining (Formalin-fixed paraffin-embedded sections) of human kidney shows strong cytoplasmic positivity in distal tubules.

## Specification

<b>Product Description</b>	Rabbit polyclonal antibody raised against partial recombinant human MAD2L1.
<b>Immunogen</b>	Recombinant protein corresponding to human MAD2L1.
<b>Sequence</b>	NNVVEQLKDWLYKCSVQKLVVVISNIESGEVLERWQFDIECDKTAKDDSAPREKSQKAIQDEIRS VIRQITATVTFLPLLEVSCSFDLLIYTDKDLVVPEKWEESGPQFITNSEEVRRLRSFTTTH
<b>Host</b>	Rabbit

Reactivity	Human
Form	Liquid
Purification	Affinity purification
Isotype	IgG
Recommend Usage	Immunohistochemistry (Formalin/PFA-fixed paraffin-embedded sections) (1:200-500) Western Blot (1:250-500) The optimal working dilution should be determined by the end user.
Storage Buffer	In PBS, pH 7.2 (40% glycerol, 0.02% sodium azide).
Storage Instruction	Store at 4°C. For long term storage store at -20°C. Aliquot to avoid repeated freezing and thawing.
Note	This product contains sodium azide: a POISONOUS AND HAZARDOUS SUBSTANCE which should be handled by trained staff only.

## Applications

- Western Blot (Cell lysate)

Western Blot (Cell lysate) analysis of (1) Human RT-4 cell and (2) Human U-251MG sp cell.

- Immunohistochemistry (Formalin/PFA-fixed paraffin-embedded sections)

Immunohistochemical staining (Formalin-fixed paraffin-embedded sections) of human kidney shows strong cytoplasmic positivity in distal tubules.

## Gene Info — MAD2L1

Entrez GeneID	<a href="#">4085</a>
GeneBank Accession#	<a href="#">Q13257</a>
Gene Name	MAD2L1
Gene Alias	HSMAD2, MAD2
Gene Description	MAD2 mitotic arrest deficient-like 1 (yeast)
Omim ID	<a href="#">601467</a>
Gene Ontology	<a href="#">Hyperlink</a>

**Gene Summary**

MAD2L1 is a component of the mitotic spindle assembly checkpoint that prevents the onset of anaphase until all chromosomes are properly aligned at the metaphase plate. MAD2L1 is related to the MAD2L2 gene located on chromosome 1. A MAD2 pseudogene has been mapped to chromosome 14. [provided by RefSeq]

**Other Designations**

MAD2 (mitotic arrest deficient, yeast, homolog)-like 1|MAD2-like 1|MAD2-like protein 1|mitotic arrest deficient, yeast, homolog-like 1

## Pathway

- [Cell cycle](#)

## Disease

- [Alcoholism](#)
- [Breast cancer](#)
- [Breast Neoplasms](#)
- [Carcinoma](#)
- [Genetic Predisposition to Disease](#)
- [Lung Neoplasms](#)