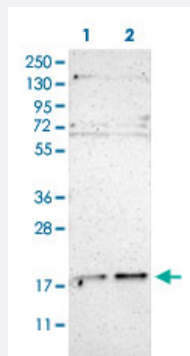


UBE2G2 polyclonal antibody

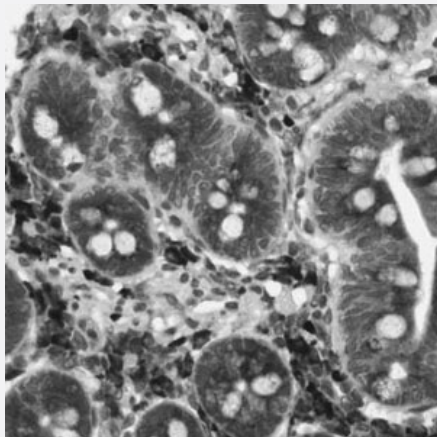
Catalog # PAB30852 Size 100 uL

Applications



Western Blot (Cell lysate)

Western Blot (Cell lysate) analysis of (1) Human RT-4 cell and (2) Human U-251MG sp cell.



Immunohistochemistry (Formalin/PFA-fixed paraffin-embedded sections)

Immunohistochemical staining (Formalin-fixed paraffin-embedded sections) of human small intestine shows strong cytoplasmic positivity in glandular cells.

Specification

Product Description	Rabbit polyclonal antibody raised against partial recombinant human UBE2G2.
Immunogen	Recombinant protein corresponding to human UBE2G2.
Sequence	LSFPLDYPLSPPKMRFTCEMFHPNYPDGRVCISILHAPGDDPMGYESSAERWSPVQSVEKILLSV VSMLAEPNDESGANVDASKMWRDDREQFYKIAKQVQKS
Host	Rabbit

Reactivity	Human
Form	Liquid
Purification	Affinity purification
Isotype	IgG
Recommend Usage	Immunohistochemistry (Formalin/PFA-fixed paraffin-embedded sections) (1:20-50) Western Blot (1:100-250) The optimal working dilution should be determined by the end user.
Storage Buffer	In PBS, pH 7.2 (40% glycerol, 0.02% sodium azide).
Storage Instruction	Store at 4°C. For long term storage store at -20°C. Aliquot to avoid repeated freezing and thawing.
Note	This product contains sodium azide: a POISONOUS AND HAZARDOUS SUBSTANCE which should be handled by trained staff only.

Applications

- Western Blot (Cell lysate)

Western Blot (Cell lysate) analysis of (1) Human RT-4 cell and (2) Human U-251MG sp cell.

- Immunohistochemistry (Formalin/PFA-fixed paraffin-embedded sections)

Immunohistochemical staining (Formalin-fixed paraffin-embedded sections) of human small intestine shows strong cytoplasmic positivity in glandular cells.

Gene Info — UBE2G2

Entrez GeneID	7327
GeneBank Accession#	P60604
Gene Name	UBE2G2
Gene Alias	UBC7
Gene Description	ubiquitin-conjugating enzyme E2G 2 (UBC7 homolog, yeast)
Omim ID	603124
Gene Ontology	Hyperlink

Gene Summary

The modification of proteins with ubiquitin is an important cellular mechanism for targeting abnormal or short-lived proteins for degradation. Ubiquitination involves at least three classes of enzymes: ubiquitin-activating enzymes, or E1s, ubiquitin-conjugating enzymes, or E2s, and ubiquitin-protein ligases, or E3s. This gene encodes a member of the E2 ubiquitin-conjugating enzyme family. The encoded protein shares 100% sequence identity with the mouse counterpart. This gene is ubiquitously expressed, with high expression seen in adult muscle. Two alternatively spliced transcript variants encoding distinct isoforms have been found for this gene. [provided by RefSeq]

Other Designations

ubiquitin carrier protein G2|ubiquitin conjugating enzyme 7|ubiquitin conjugating enzyme G2|ubiquitin-conjugating enzyme E2G 2|ubiquitin-conjugating enzyme E2G 2 (homologous to yeast UBC7)|ubiquitin-protein ligase G2

Pathway

- [Ubiquitin mediated proteolysis](#)