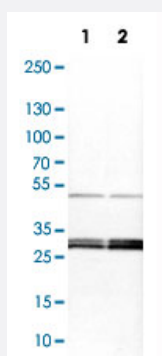


# YWHAE polyclonal antibody

Catalog # PAB30801

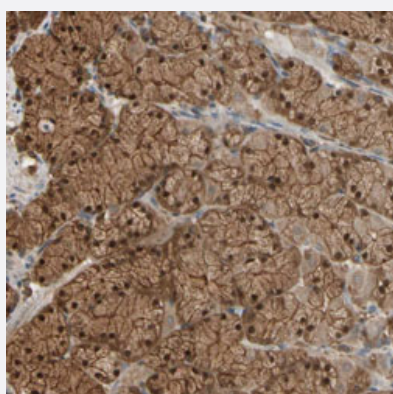
Size 100 uL

## Applications



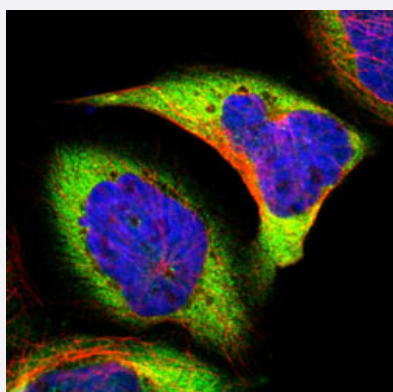
### Western Blot (Cell lysate)

Western Blot analysis of Lane 1: NIH-3T3 cell lysate (mouse embryonic fibroblast cells) and Lane 2: NBT-II cell lysate (Wistar rat bladder tumor cells) with YWHAE polyclonal antibody (Cat # PAB30801).



### Immunohistochemistry (Formalin/PFA-fixed paraffin-embedded sections)

Immunohistochemical staining (Formalin-fixed paraffin-embedded sections) of human stomach with YWHAE polyclonal antibody (Cat # PAB30801) shows strong cytoplasmic and nuclear positivity in glandular cells.



### Immunofluorescence

Immunofluorescent staining of A-431 cells with YWHAE polyclonal antibody (Cat # PAB30801) (Green) shows positivity in cytoplasm.

## Specification

<b>Product Description</b>	Rabbit polyclonal antibody raised against partial recombinant human YWHAE.
<b>Immunogen</b>	Recombinant protein corresponding to human YWHAE.
<b>Sequence</b>	MDDREDLVYQAKLA EQAERYDEMVESMKKVAGMDVELTVEERNLLSVAYKNVIGARRASWRIIS SIEQKE
<b>Host</b>	Rabbit
<b>Reactivity</b>	Human, Mouse, Rat
<b>Form</b>	Liquid
<b>Purification</b>	Antigen affinity purification
<b>Isotype</b>	IgG
<b>Recommend Usage</b>	Immunofluorescence (1-4 ug/mL) Immunohistochemistry (Formalin/PFA-fixed paraffin-embedded sections) (1:500-1:1000) Western Blot (1:100-1:250) The optimal working dilution should be determined by the end user.
<b>Storage Buffer</b>	In PBS, pH 7.2 (40% glycerol, 0.02% sodium azide).
<b>Storage Instruction</b>	Store at 4°C. For long term storage store at -20°C. Aliquot to avoid repeated freezing and thawing.
<b>Note</b>	This product contains sodium azide: a POISONOUS AND HAZARDOUS SUBSTANCE which should be handled by trained staff only.

## Applications

- Western Blot (Cell lysate)

Western Blot analysis of Lane 1: NIH-3T3 cell lysate (mouse embryonic fibroblast cells) and Lane 2: NBT-II cell lysate (Wistar rat bladder tumor cells) with YWHAE polyclonal antibody (Cat # PAB30801).

- Immunohistochemistry (Formalin/PFA-fixed paraffin-embedded sections)

Immunohistochemical staining (Formalin-fixed paraffin-embedded sections) of human stomach with YWHAE polyclonal antibody (Cat # PAB30801) shows strong cytoplasmic and nuclear positivity in glandular cells.

- Immunofluorescence

Immunofluorescent staining of A-431 cells with YWHAE polyclonal antibody (Cat # PAB30801) (Green) shows positivity in cytoplasm.

## Gene Info — YWHAE

Entrez GeneID	<a href="#">7531</a>
Protein Accession#	<a href="#">P62258</a>
Gene Name	YWHAE
Gene Alias	14-3-3E, FLJ45465, KCIP-1, MDCR, MDS
Gene Description	tyrosine 3-monooxygenase/tryptophan 5-monooxygenase activation protein, epsilon polypeptide
Omim ID	<a href="#">247200</a> <a href="#">605066</a>
Gene Ontology	<a href="#">Hyperlink</a>
Gene Summary	<p>This gene product belongs to the 14-3-3 family of proteins which mediate signal transduction by binding to phosphoserine-containing proteins. This highly conserved protein family is found in both plants and mammals, and this protein is 100% identical to the mouse ortholog. It interacts with CD C25 phosphatases, RAF1 and IRS1 proteins, suggesting its role in diverse biochemical activities related to signal transduction, such as cell division and regulation of insulin sensitivity. It has also been implicated in the pathogenesis of small cell lung cancer. Two transcript variants, one protein-coding and the other non-protein-coding, have been found for this gene. [provided by RefSeq]</p>
Other Designations	14-3-3 epsilon mitochondrial import stimulation factor L subunit protein kinase C inhibitor protein-1 tyrosine 3/tryptophan 5 -monooxygenase activation protein, epsilon polypeptide

## Pathway

- [Cell cycle](#)
- [Neurotrophin signaling pathway](#)

## Disease

- [Genetic Predisposition to Disease](#)