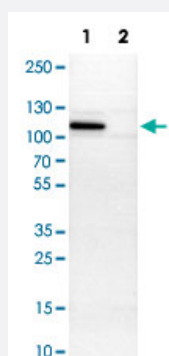


HSP90B1 polyclonal antibody

Catalog # PAB30800

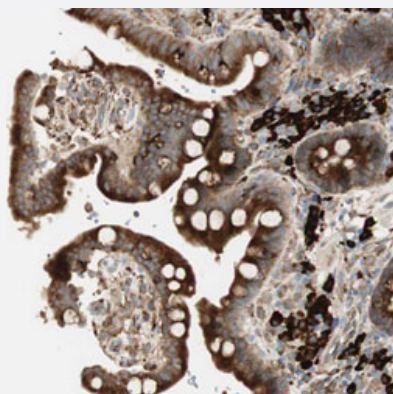
Size 100 uL

Applications



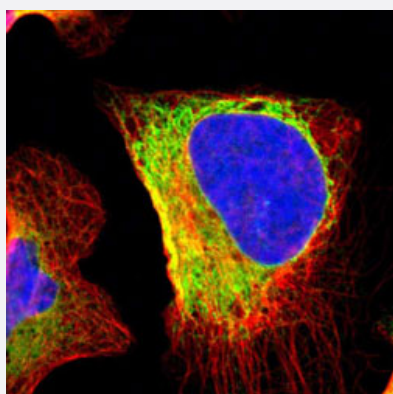
Western Blot (Cell lysate)

Western Blot analysis of Lane 1: NIH-3T3 cell lysate (mouse embryonic fibroblast cells) and Lane 2: NBT-II cell lysate (Wistar rat bladder tumor cells) with HSP90B1 polyclonal antibody (Cat # PAB30800).



Immunohistochemistry (Formalin/PFA-fixed paraffin-embedded sections)

Immunohistochemical staining (Formalin-fixed paraffin-embedded sections) of human colon with HSP90B1 polyclonal antibody (Cat # PAB30800) shows strong cytoplasmic positivity in glandular cells.



Immunofluorescence

Immunofluorescent staining of U-2 OS with HSP90B1 polyclonal antibody (Cat # PAB30800) (Green) shows positivity in endoplasmic reticulum.

Specification

Product Description	Rabbit polyclonal antibody raised against partial recombinant human HSP90B1.
Immunogen	Recombinant protein corresponding to human HSP90B1.
Sequence	WSSKTETVEEPMEEEEAAKEEKEESDDEAAVEEEEEKKPKTKKVEKTVWDWELMNDIKPIWQ RPSKEVEEDEYKAFYKFSKESDDPMAYIHFTAEGEVTFKSILFVPTS
Host	Rabbit
Reactivity	Human, Mouse
Form	Liquid
Purification	Antigen affinity purification
Isotype	IgG
Recommend Usage	Immunofluorescence (1-4 ug/mL) Immunohistochemistry (Formalin/PFA-fixed paraffin-embedded sections) (1:200-1:500) Western Blot (1:100-1:250) The optimal working dilution should be determined by the end user.
Storage Buffer	In PBS, pH 7.2 (40% glycerol, 0.02% sodium azide).
Storage Instruction	Store at 4°C. For long term storage store at -20°C. Aliquot to avoid repeated freezing and thawing.
Note	This product contains sodium azide: a POISONOUS AND HAZARDOUS SUBSTANCE which should be handled by trained staff only.

Applications

- Western Blot (Cell lysate)

Western Blot analysis of Lane 1: NIH-3T3 cell lysate (mouse embryonic fibroblast cells) and Lane 2: NBT-II cell lysate (Wistar rat bladder tumor cells) with HSP90B1 polyclonal antibody (Cat # PAB30800).

- Immunohistochemistry (Formalin/PFA-fixed paraffin-embedded sections)

Immunohistochemical staining (Formalin-fixed paraffin-embedded sections) of human colon with HSP90B1 polyclonal antibody (Cat # PAB30800) shows strong cytoplasmic positivity in glandular cells.

- Immunofluorescence

Immunofluorescent staining of U-2 OS with HSP90B1 polyclonal antibody (Cat # PAB30800) (Green) shows positivity in endoplasmic reticulum.

Gene Info — HSP90B1

Entrez GeneID	7184
Protein Accession#	P14625
Gene Name	HSP90B1
Gene Alias	ECGP, GP96, GRP94, TRA1
Gene Description	heat shock protein 90kDa beta (Grp94), member 1
Omim ID	191175
Gene Ontology	Hyperlink
Gene Summary	HSP90 proteins are highly conserved molecular chaperones that have key roles in signal transduction, protein folding, protein degradation, and morphologic evolution. HSP90 proteins normally associate with other cochaperones and play important roles in folding newly synthesized proteins or stabilizing and refolding denatured proteins after stress. HSP90B1 is an endoplasmic reticulum HSP90 protein. Other HSP90 proteins are found in cytosol (see HSP90AA1; MIM 140571) and mitochondria (TRAP1; MIM 606219) (Chen et al., 2005 [PubMed 16269234]).[supplied by OMIM]
Other Designations	Tumor rejection antigen-1 (gp96) endothelial cell (HBMEC) glycoprotein glucose regulated protein, 94 kDa heat shock protein 90kDa beta, member 1 tumor rejection antigen (gp96) 1

Pathway

- [Pathways in cancer](#)
- [Prostate cancer](#)

Disease

- [Bipolar Disorder](#)
- [Cardiovascular Diseases](#)
- [Diabetes Mellitus](#)
- [Edema](#)
- [Kidney Failure](#)
- [Schizophrenia](#)