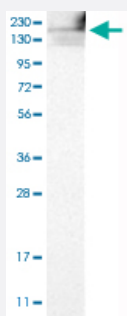


FKBP15 polyclonal antibody

Catalog # PAB30789

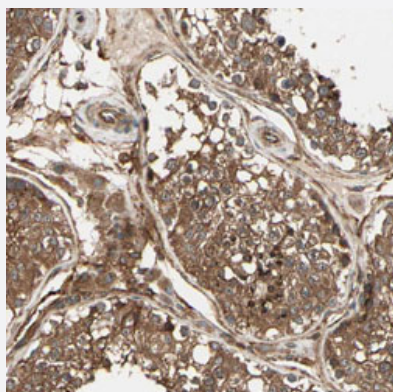
Size 100 uL

Applications



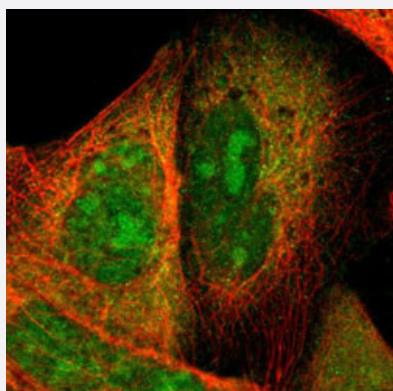
Western Blot (Cell lysate)

Western Blot analysis of RT-4 cell lysate with FKBP15 polyclonal antibody (Cat # PAB30789).



Immunohistochemistry (Formalin/PFA-fixed paraffin-embedded sections)

Immunohistochemical staining (Formalin-fixed paraffin-embedded sections) of human testis with FKBP15 polyclonal antibody (Cat # PAB30789) shows strong cytoplasmic positivity in cells in seminiferous ducts and Leydig cells.



Immunofluorescence

Immunofluorescent staining of A-431 cells with FKBP15 polyclonal antibody (Cat # PAB30789) (Green) shows positivity in nucleoli and cytoplasm.

Specification

Product Description	Rabbit polyclonal antibody raised against partial recombinant human FKBP15.
Immunogen	Recombinant protein corresponding to human FKBP15.
Sequence	KHSAGNSMLIPSMSVTMETSMIMSNIQRIQENERLKQEILEKSNRIEEQNDKISELIERNQRYVEQSN LMMEKRNNSLQTATENTQARVLHAEQEKAKVTEELAAATAQVSHLQLKMTAHQ
Host	Rabbit
Reactivity	Human
Form	Liquid
Purification	Antigen affinity purification
Isotype	IgG
Recommend Usage	Immunofluorescence (1-4 ug/mL) Immunohistochemistry (Formalin/PFA-fixed paraffin-embedded sections) (1:20-1:50) Western Blot (1:100-1:250) The optimal working dilution should be determined by the end user.
Storage Buffer	In PBS, pH 7.2 (40% glycerol, 0.02% sodium azide).
Storage Instruction	Store at 4°C. For long term storage store at -20°C. Aliquot to avoid repeated freezing and thawing.
Note	This product contains sodium azide: a POISONOUS AND HAZARDOUS SUBSTANCE which should be handled by trained staff only.

Applications

- Western Blot (Cell lysate)

Western Blot analysis of RT-4 cell lysate with FKBP15 polyclonal antibody (Cat # PAB30789).

- Immunohistochemistry (Formalin/PFA-fixed paraffin-embedded sections)

Immunohistochemical staining (Formalin-fixed paraffin-embedded sections) of human testis with FKBP15 polyclonal antibody (Cat # PAB30789) shows strong cytoplasmic positivity in cells in seminiferous ducts and Leydig cells.

- Immunofluorescence

Immunofluorescent staining of A-431 cells with FKBP15 polyclonal antibody (Cat # PAB30789) (Green) shows positivity in nucleoli and cytoplasm.

Gene Info — FKBP15

Entrez GeneID	23307
Protein Accession#	Q5T1M5
Gene Name	FKBP15
Gene Alias	FKBP133, KIAA0674
Gene Description	FK506 binding protein 15, 133kDa
Gene Ontology	Hyperlink
Gene Summary	O
Other Designations	FK506-binding protein 133kDa