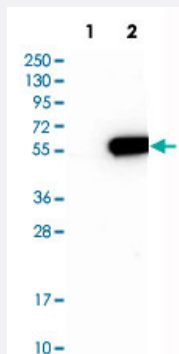


MINA polyclonal antibody

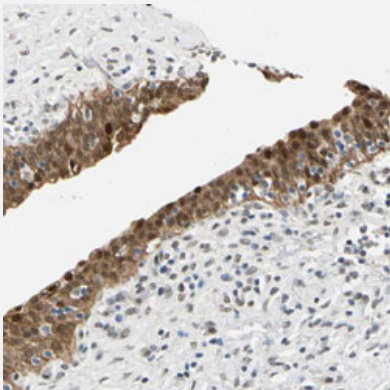
Catalog # PAB30782 Size 100 uL

Applications



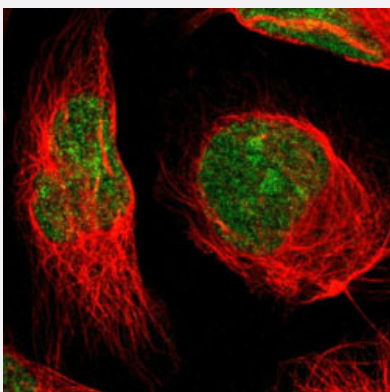
Western Blot (Transfected lysate)

Western Blot analysis of Lane 1: negative control (vector only transfected HEK293T cell lysate) and Lane 2: over-expression lysate (co-expressed with a C-terminal myc-DDK tag in mammalian HEK293T cells) with MINA polyclonal antibody (Cat # PAB30782).



Immunohistochemistry (Formalin/PFA-fixed paraffin-embedded sections)

Immunohistochemical staining (Formalin-fixed paraffin-embedded sections) of human urinary bladder with MINA polyclonal antibody (Cat # PAB30782) shows strong nuclear and cytoplasmic positivity in urothelial cells.



Immunofluorescence

Immunofluorescent staining of U-2 OS with MINA polyclonal antibody (Cat # PAB30782) (Green) shows positivity in nucleus and nucleoli.

Specification

Product Description	Rabbit polyclonal antibody raised against partial recombinant human MINA.
Immunogen	Recombinant protein corresponding to human MINA.
Sequence	MPKKAKPTGSGKEEGPAPCKQMKLEAAGGPSALNFDSPSSLFESLISPIKTETFFKEFWEQKPL LIQRDDPALATYYGSLFKLTDLKSLCSRGMYGRDVNVCRCVNGKKKVLNKDGKAHFLQLRKDF DQKRATIQFHQPQRFKDELW
Host	Rabbit
Reactivity	Human
Form	Liquid
Purification	Antigen affinity purification
Isotype	IgG
Recommend Usage	Immunofluorescence (1-4 ug/mL) Immunohistochemistry (Formalin/PFA-fixed paraffin-embedded sections) (1:20-1:50) Western Blot (1:100-1:250) The optimal working dilution should be determined by the end user.
Storage Buffer	In PBS, pH 7.2 (40% glycerol, 0.02% sodium azide).
Storage Instruction	Store at 4°C. For long term storage store at -20°C. Aliquot to avoid repeated freezing and thawing.
Note	This product contains sodium azide: a POISONOUS AND HAZARDOUS SUBSTANCE which should be handled by trained staff only.

Applications

- Western Blot (Transfected lysate)

Western Blot analysis of Lane 1: negative control (vector only transfected HEK293T cell lysate) and Lane 2: over-expression lysate (co-expressed with a C-terminal myc-DDK tag in mammalian HEK293T cells) with MINA polyclonal antibody (Cat # PAB30782).

- Immunohistochemistry (Formalin/PFA-fixed paraffin-embedded sections)

Immunohistochemical staining (Formalin-fixed paraffin-embedded sections) of human urinary bladder with MINA polyclonal antibody (Cat # PAB30782) shows strong nuclear and cytoplasmic positivity in urothelial cells.

- Immunofluorescence

Immunofluorescent staining of U-2 OS with MINA polyclonal antibody (Cat # PAB30782) (Green) shows positivity in nucleus and nucleoli.

Gene Info — MINA

Entrez GeneID	84864
Protein Accession#	Q8IUF8
Gene Name	MINA
Gene Alias	DKFZp762O1912, FLJ14393, MDIG, MINA53, NO52
Gene Description	MYC induced nuclear antigen
Gene Ontology	Hyperlink
Gene Summary	MINA is a c-Myc (MYC; MIM 190080) target gene that may play a role in cell proliferation or regulation of cell growth. (Tsuneoka et al., 2002 [PubMed 12091391]; Zhang et al., 2005 [PubMed 15897898]).[supplied by OMIM]
Other Designations	mineral dust induced gene protein myc-induced nuclear antigen, 53 kDa