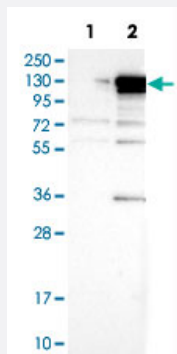


# KIF11 polyclonal antibody

Catalog # PAB30770

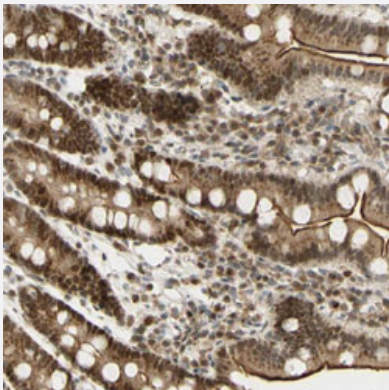
Size 100 uL

## Applications



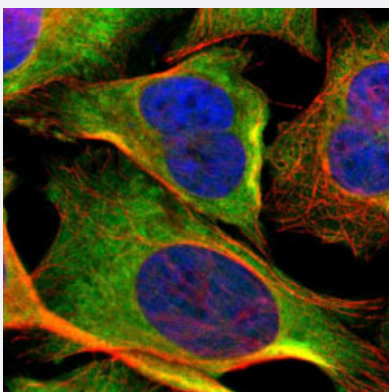
### Western Blot (Transfected lysate)

Western Blot analysis of Lane 1: negative control (vector only transfected HEK293T cell lysate) and Lane 2: over-expression lysate (co-expressed with a C-terminal myc-DDK tag in mammalian HEK293T cells) with KIF11 polyclonal antibody (Cat # PAB30770).



### Immunohistochemistry (Formalin/PFA-fixed paraffin-embedded sections)

Immunohistochemical staining (Formalin-fixed paraffin-embedded sections) of human duodenum with KIF11 polyclonal antibody (Cat # PAB30770) shows strong nuclear, membranous and cytoplasmic positivity in glandular cells.



### Immunofluorescence

Immunofluorescent staining of U-2 OS with KIF11 polyclonal antibody (Cat # PAB30770) (Green) shows positivity in cytoplasm.

## Specification

<b>Product Description</b>	Rabbit polyclonal antibody raised against partial recombinant human KIF11.
<b>Immunogen</b>	Recombinant protein corresponding to human KIF11.
<b>Sequence</b>	EMILSPTVVSILKINSQLKHIFKTSLTVADKIEDQKKELDGFLSILCNNLHELQENTICSLVESQKQCG NLTEDLKTIKQTHSQELCKLMNLWTERFCALEEKCENIQKPLSSVQENIQKSKDIVNKMTFHSQK FCADSDGFSQELR
<b>Host</b>	Rabbit
<b>Reactivity</b>	Human
<b>Form</b>	Liquid
<b>Purification</b>	Antigen affinity purification
<b>Isotype</b>	IgG
<b>Recommend Usage</b>	Immunofluorescence (1-4 ug/mL) Immunohistochemistry (Formalin/PFA-fixed paraffin-embedded sections) (1:200-1:500) Western Blot (1:100-1:250) The optimal working dilution should be determined by the end user.
<b>Storage Buffer</b>	In PBS, pH 7.2 (40% glycerol, 0.02% sodium azide).
<b>Storage Instruction</b>	Store at 4°C. For long term storage store at -20°C. Aliquot to avoid repeated freezing and thawing.
<b>Note</b>	This product contains sodium azide: a POISONOUS AND HAZARDOUS SUBSTANCE which should be handled by trained staff only.

## Applications

- Western Blot (Transfected lysate)

Western Blot analysis of Lane 1: negative control (vector only transfected HEK293T cell lysate) and Lane 2: over-expression lysate (co-expressed with a C-terminal myc-DDK tag in mammalian HEK293T cells) with KIF11 polyclonal antibody (Cat # PAB30770).

- Immunohistochemistry (Formalin/PFA-fixed paraffin-embedded sections)

Immunohistochemical staining (Formalin-fixed paraffin-embedded sections) of human duodenum with KIF11 polyclonal antibody (Cat # PAB30770) shows strong nuclear, membranous and cytoplasmic positivity in glandular cells.

- Immunofluorescence

Immunofluorescent staining of U-2 OS with KIF11 polyclonal antibody (Cat # PAB30770) (Green) shows positivity in cytoplasm.

## Gene Info — KIF11

**Entrez GeneID** [3832](#)**Protein Accession#** [P52732](#)**Gene Name** KIF11**Gene Alias** EG5, HKSP, KNSL1, TRIP5**Gene Description** kinesin family member 11**Omim ID** [148760](#)**Gene Ontology** [Hyperlink](#)

**Gene Summary** This gene encodes a motor protein that belongs to the kinesin-like protein family. Members of this protein family are known to be involved in various kinds of spindle dynamics. The function of this gene product includes chromosome positioning, centrosome separation and establishing a bipolar spindle during cell mitosis. [provided by RefSeq]

**Other Designations** OTTHUMP00000020099|kinesin-like 1|kinesin-like spindle protein|kinesin-related motor protein|thyroid receptor interacting protein 5

## Disease

- [Alzheimer disease](#)
- [Diabetes Mellitus](#)
- [Genetic Predisposition to Disease](#)
- [Glucose Intolerance](#)