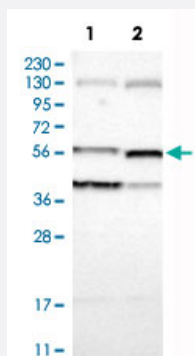


# VIL1 polyclonal antibody

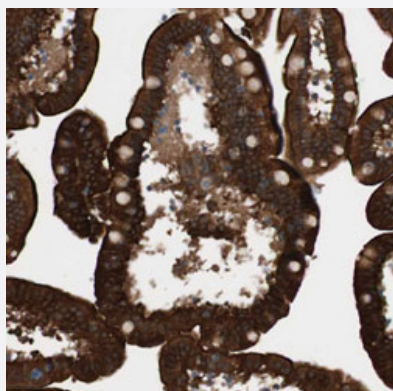
Catalog # PAB30768      Size 100 uL

## Applications



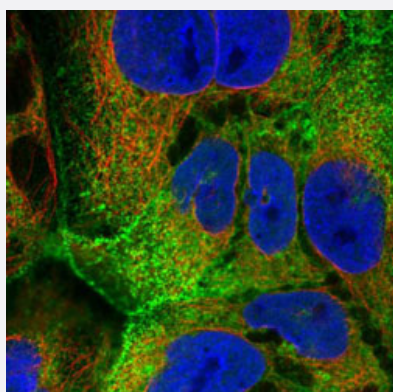
### Western Blot (Cell lysate)

Western Blot analysis of Lane 1: RT-4 and Lane 2: U-251MG sp cell lysates with VIL1 polyclonal antibody (Cat # PAB30768).



### Immunohistochemistry (Formalin/PFA-fixed paraffin-embedded sections)

Immunohistochemical staining (Formalin-fixed paraffin-embedded sections) of human small intestine with VIL1 polyclonal antibody (Cat # PAB30768) shows strong luminal membranous and cytoplasmic positivity in glandular cells.



### Immunofluorescence

Immunofluorescent staining of CACO-2 with VIL1 polyclonal antibody (Cat # PAB30768) (Green) shows positivity in plasma membrane and nucleus but excluded from the nucleoli.

## Specification

<b>Product Description</b>	Rabbit polyclonal antibody raised against partial recombinant human VIL1.
<b>Immunogen</b>	Recombinant protein corresponding to human VIL1.
<b>Sequence</b>	PFKWSNTKSYEDLKAELGNSRDWSQITAEVTSPKVDVFNANSNLSSGPLPIFPLEQLVNKPVEEL PEGVDPSRKEEHLSIEDFTQAFGMTPAAFSALPRWKQQNLKKE
<b>Host</b>	Rabbit
<b>Reactivity</b>	Human
<b>Form</b>	Liquid
<b>Purification</b>	Antigen affinity purification
<b>Isotype</b>	IgG
<b>Recommend Usage</b>	Immunofluorescence (1-4 ug/mL) Immunohistochemistry (Formalin/PFA-fixed paraffin-embedded sections) (1:200-1:500) Western Blot (1:100-1:250) The optimal working dilution should be determined by the end user.
<b>Storage Buffer</b>	In PBS, pH 7.2 (40% glycerol, 0.02% sodium azide).
<b>Storage Instruction</b>	Store at 4°C. For long term storage store at -20°C. Aliquot to avoid repeated freezing and thawing.
<b>Note</b>	This product contains sodium azide: a POISONOUS AND HAZARDOUS SUBSTANCE which should be handled by trained staff only.

## Applications

- Western Blot (Cell lysate)

Western Blot analysis of Lane 1: RT-4 and Lane 2: U-251MG sp cell lysates with VIL1 polyclonal antibody (Cat # PAB30768).

- Immunohistochemistry (Formalin/PFA-fixed paraffin-embedded sections)

Immunohistochemical staining (Formalin-fixed paraffin-embedded sections) of human small intestine with VIL1 polyclonal antibody (Cat # PAB30768) shows strong luminal membranous and cytoplasmic positivity in glandular cells.

- Immunofluorescence

Immunofluorescent staining of CACO-2 with VIL1 polyclonal antibody (Cat # PAB30768) (Green) shows positivity in plasma membrane and nucleus but excluded from the nucleoli.

## Gene Info — VIL1

**Entrez GeneID** [7429](#)**Protein Accession#** [P09327](#)**Gene Name** VIL1**Gene Alias** D2S1471, VIL**Gene Description** villin 1**Omim ID** [193040](#)**Gene Ontology** [Hyperlink](#)

**Gene Summary** This gene encodes a member of a family of calcium-regulated actin-binding proteins. This protein represents a dominant part of the brush border cytoskeleton which functions in the capping, severing, and bundling of actin filaments. Two mRNAs of 2.7 kb and 3.5 kb have been observed; they result from utilization of alternate poly-adenylation signals present in the terminal exon. [provided by RefSeq]

**Other Designations** OTTHUMP00000164145