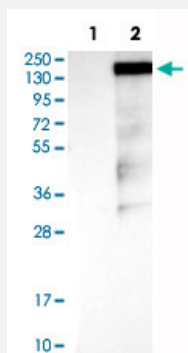


RAPGEF1 polyclonal antibody

Catalog # PAB30758

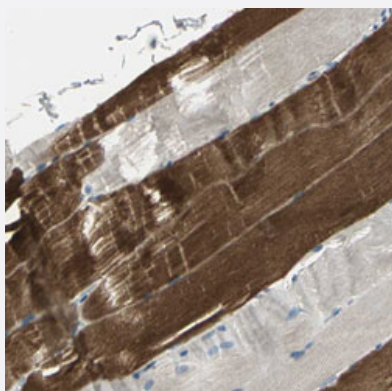
Size 100 uL

Applications



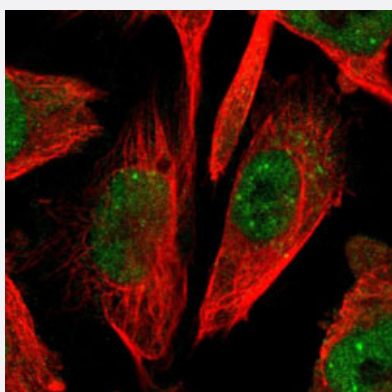
Western Blot (Transfected lysate)

Western Blot analysis of Lane 1: negative control (vector only transfected HEK293T cell lysate) and Lane 2: over-expression lysate (co-expressed with a C-terminal myc-DDK tag in mammalian HEK293T cells) with RAPGEF1 polyclonal antibody (Cat # PAB30758).



Immunohistochemistry (Formalin/PFA-fixed paraffin-embedded sections)

Immunohistochemical staining (Formalin-fixed paraffin-embedded sections) of human skeletal muscle with RAPGEF1 polyclonal antibody (Cat # PAB30758) shows strong cytoplasmic positivity in myocytes.



Immunofluorescence

Immunofluorescent staining of U-251 MG with RAPGEF1 polyclonal antibody (Cat # PAB30758) (Green) shows positivity in nucleus but excluded from the nucleoli.

Specification

Product Description	Rabbit polyclonal antibody raised against partial recombinant human RAPGEF1.
Immunogen	Recombinant protein corresponding to human RAPGEF1.
Sequence	SWLEEKEKEVVSALRYFKTIVDKMAIDKKVLEMLPGSASKVLEAILPLVQNDPRIQHSSALSSCYS RVYQSLANLIRWSDQVMLEGVNSEDKEMVTTVKGVKAVLDGVKELVRLTIEKQGRPSPTSPVKP SSPASK
Host	Rabbit
Reactivity	Human
Form	Liquid
Purification	Antigen affinity purification
Isotype	IgG
Recommend Usage	Immunofluorescence (1-4 ug/mL) Immunohistochemistry (Formalin/PFA-fixed paraffin-embedded sections) (1:50-1:200) Western Blot (1:100-1:250) The optimal working dilution should be determined by the end user.
Storage Buffer	In PBS, pH 7.2 (40% glycerol, 0.02% sodium azide).
Storage Instruction	Store at 4°C. For long term storage store at -20°C. Aliquot to avoid repeated freezing and thawing.
Note	This product contains sodium azide: a POISONOUS AND HAZARDOUS SUBSTANCE which should be handled by trained staff only.

Applications

- Western Blot (Transfected lysate)

Western Blot analysis of Lane 1: negative control (vector only transfected HEK293T cell lysate) and Lane 2: over-expression lysate (co-expressed with a C-terminal myc-DDK tag in mammalian HEK293T cells) with RAPGEF1 polyclonal antibody (Cat # PAB30758).

- Immunohistochemistry (Formalin/PFA-fixed paraffin-embedded sections)

Immunohistochemical staining (Formalin-fixed paraffin-embedded sections) of human skeletal muscle with RAPGEF1 polyclonal antibody (Cat # PAB30758) shows strong cytoplasmic positivity in myocytes.

- Immunofluorescence

Immunofluorescent staining of U-251 MG with RAPGEF1 polyclonal antibody (Cat # PAB30758) (Green) shows positivity in nucleus but excluded from the nucleoli.

Gene Info — RAPGEF1

Entrez GeneID	2889
Protein Accession#	Q13905
Gene Name	RAPGEF1
Gene Alias	C3G, DKFZp781P1719, GRF2
Gene Description	Rap guanine nucleotide exchange factor (GEF) 1
Omim ID	600303
Gene Ontology	Hyperlink
Gene Summary	This gene encodes a human guanine nucleotide exchange factor. It transduces signals from CRK by binding the SH3 domain of CRK, and activating several members of the Ras family of GTPases. This signaling cascade that may be involved in apoptosis, integrin-mediated signal transduction, and cell transformation. Several alternatively spliced transcript variants of this gene have been described, but the full-length nature of some variants has not been determined. [provided by RefSeq]
Other Designations	OTTHUMP00000064558 guanine nucleotide-releasing factor 2 guanine nucleotide-releasing factor 2 (specific for crk proto-oncogene)

Pathway

- [Focal adhesion](#)
- [Insulin signaling pathway](#)
- [Neurotrophin signaling pathway](#)
- [Renal cell carcinoma](#)

Disease

- [Diabetes Mellitus](#)
- [Disease Progression](#)
- [Disease Susceptibility](#)

- [Genetic Predisposition to Disease](#)
- [HIV Infections](#)
- [Tobacco Use Disorder](#)