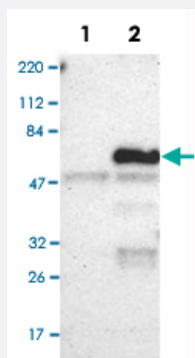


# OCLN polyclonal antibody

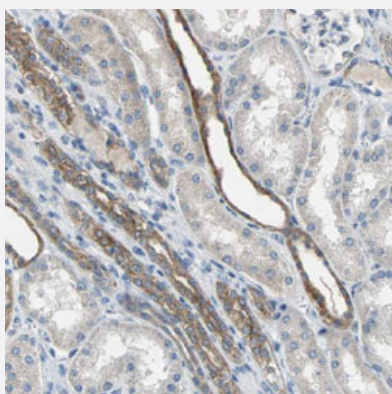
Catalog # PAB30752      Size 100 uL

## Applications



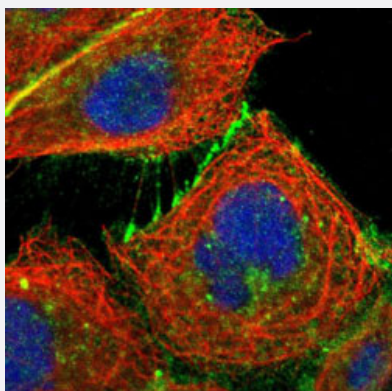
### Western Blot (Cell lysate)

Western Blot analysis of Lane 1: RT-4 and Lane 2: U-251MG sp cell lysates with OCLN polyclonal antibody (Cat # PAB30752).



### Immunohistochemistry (Formalin/PFA-fixed paraffin-embedded sections)

Immunohistochemical staining (Formalin-fixed paraffin-embedded sections) of human kidney with OCLN polyclonal antibody (Cat # PAB30752) shows moderate cytoplasmic positivity in cells in tubules.



### Immunofluorescence

Immunofluorescent staining of A-431 cells with OCLN polyclonal antibody (Cat # PAB30752) (Green) shows positivity in plasma membrane and cell junctions.

## Specification

<b>Product Description</b>	Rabbit polyclonal antibody raised against partial recombinant human OCLN.
<b>Immunogen</b>	Recombinant protein corresponding to human OCLN.
<b>Sequence</b>	DKEHYDEQPPNVEEWVKNVSAGTQDVPSPPSDYVERVDSPMAYSSNGKVNDKRFYPESSYKS TPVPEVVQELPLTSPVDDFRQPRYSSGGNFETPSKRAPAKGRAGRSKRTEQDHYETDYTTGGES CDELEED
<b>Host</b>	Rabbit
<b>Reactivity</b>	Human
<b>Form</b>	Liquid
<b>Purification</b>	Antigen affinity purification
<b>Isotype</b>	IgG
<b>Recommend Usage</b>	Immunofluorescence (1-4 ug/mL) Immunohistochemistry (Formalin/PFA-fixed paraffin-embedded sections) (1:200-1:500) Western Blot (1:250-1:500) The optimal working dilution should be determined by the end user.
<b>Storage Buffer</b>	In PBS, pH 7.2 (40% glycerol, 0.02% sodium azide).
<b>Storage Instruction</b>	Store at 4°C. For long term storage store at -20°C. Aliquot to avoid repeated freezing and thawing.
<b>Note</b>	This product contains sodium azide: a POISONOUS AND HAZARDOUS SUBSTANCE which should be handled by trained staff only.

## Applications

- Western Blot (Cell lysate)

Western Blot analysis of Lane 1: RT-4 and Lane 2: U-251MG sp cell lysates with OCLN polyclonal antibody (Cat # PAB30752).

- Immunohistochemistry (Formalin/PFA-fixed paraffin-embedded sections)

Immunohistochemical staining (Formalin-fixed paraffin-embedded sections) of human kidney with OCLN polyclonal antibody (Cat # PAB30752) shows moderate cytoplasmic positivity in cells in tubules.

- Immunofluorescence

Immunofluorescent staining of A-431 cells with OCLN polyclonal antibody (Cat # PAB30752) (Green) shows positivity in plasma membrane and cell junctions.

## Gene Info — OCLN

Entrez GeneID	<a href="#">100506658</a>
Protein Accession#	<a href="#">Q16625</a>
Gene Name	OCLN
Gene Alias	BLCPMG, PPP1R115, PTORCH1
Gene Description	occludin
Gene Ontology	<a href="#">Hyperlink</a>
Gene Summary	regulatory subunit 115 tight junction protein occludin
Other Designations	occludin phosphatase 1, regulatory subunit 115 tight junction protein occludin