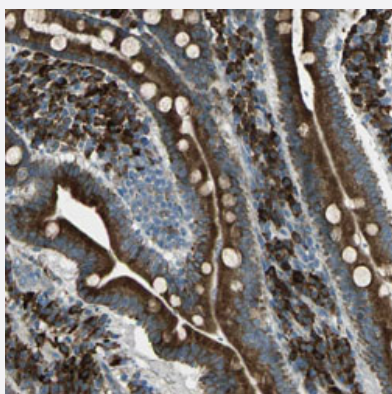


CDC25A polyclonal antibody

Catalog # PAB30750

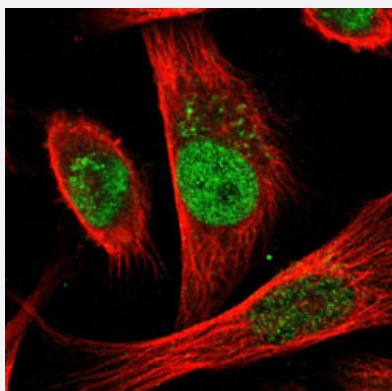
Size 100 uL

Applications



Immunohistochemistry (Formalin/PFA-fixed paraffin-embedded sections)

Immunohistochemical staining (Formalin-fixed paraffin-embedded sections) of human duodenum with CDC25A polyclonal antibody (Cat # PAB30750) shows strong cytoplasmic positivity in glandular cells.



Immunofluorescence

Immunofluorescent staining of U-251 MG with CDC25A polyclonal antibody (Cat # PAB30750) (Green) shows positivity in the Golgi apparatus and nucleus but excluded from the nucleoli.

Specification

Product Description	Rabbit polyclonal antibody raised against partial recombinant human CDC25A.
Immunogen	Recombinant protein corresponding to human CDC25A.
Sequence	VAGKHQDLKYISPEIMASVLNGKFANLIKEFVIIDCRYPYEEYEGGHIKGAVNLHMEEEVEDFLLKKPI VPTDGKRVVVFHCEFSSERGPRMCRYVRERDRLGNEYPKLHYPELYVLKGGYKEFFMKCQSY
Host	Rabbit
Reactivity	Human

Form	Liquid
Purification	Antigen affinity purification
Isotype	IgG
Recommend Usage	Immunofluorescence (1-4 ug/mL) Immunohistochemistry (Formalin/PFA-fixed paraffin-embedded sections) (1:50-1:200) The optimal working dilution should be determined by the end user.
Storage Buffer	In PBS, pH 7.2 (40% glycerol, 0.02% sodium azide).
Storage Instruction	Store at 4°C. For long term storage store at -20°C. Aliquot to avoid repeated freezing and thawing.
Note	This product contains sodium azide: a POISONOUS AND HAZARDOUS SUBSTANCE which should be handled by trained staff only.

Applications

- Immunohistochemistry (Formalin/PFA-fixed paraffin-embedded sections)

Immunohistochemical staining (Formalin-fixed paraffin-embedded sections) of human duodenum with CDC25A polyclonal antibody (Cat # PAB30750) shows strong cytoplasmic positivity in glandular cells.

- Immunofluorescence

Immunofluorescent staining of U-251 MG with CDC25A polyclonal antibody (Cat # PAB30750) (Green) shows positivity in the Golgi apparatus and nucleus but excluded from the nucleoli.

Gene Info — CDC25A

Entrez GeneID	993
Protein Accession#	P30304
Gene Name	CDC25A
Gene Alias	CDC25A2
Gene Description	cell division cycle 25 homolog A (S. pombe)
Omim ID	116947
Gene Ontology	Hyperlink

Gene Summary

CDC25A is a member of the CDC25 family of phosphatases. CDC25A is required for progression from G1 to the S phase of the cell cycle. It activates the cyclin-dependent kinase CDC2 by removing two phosphate groups. CDC25A is specifically degraded in response to DNA damage, which prevents cells with chromosomal abnormalities from progressing through cell division. CDC25A is an oncogene, although its exact role in oncogenesis has not been demonstrated. Two transcript variants encoding different isoforms have been found for this gene. [provided by RefSeq]

Other Designations

M-phase inducer phosphatase 1|cell division cycle 25A|dual specificity phosphatase CDC25A

Pathway

- [Cell cycle](#)

Disease

- [Adenocarcinoma](#)
- [Breast Neoplasms](#)
- [Esophageal Neoplasms](#)
- [Genetic Predisposition to Disease](#)
- [Lung Neoplasms](#)
- [Ovarian Neoplasms](#)
- [Pulmonary Disease](#)
- [Schizophrenia](#)
- [Tobacco Use Disorder](#)
- [Urinary Bladder Neoplasms](#)
- [Werner syndrome](#)