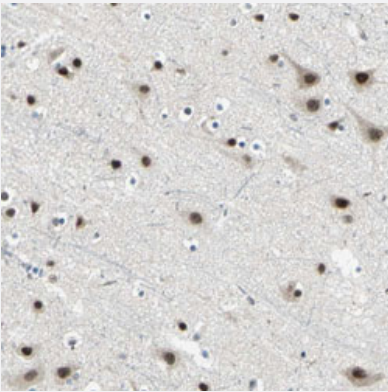


MTA1 polyclonal antibody

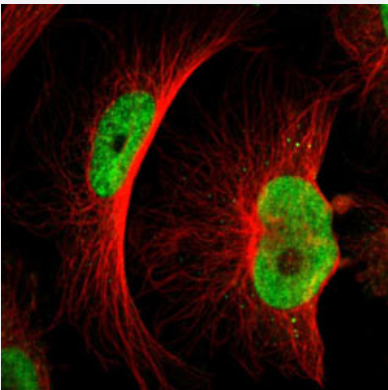
Catalog # PAB30742 Size 100 uL

Applications



Immunohistochemistry (Formalin/PFA-fixed paraffin-embedded sections)

Immunohistochemical staining (Formalin-fixed paraffin-embedded sections) of human cerebral cortex with MTA1 polyclonal antibody (Cat # PAB30742) shows strong nuclear positivity in neuronal cells.



Immunofluorescence

Immunofluorescent staining of U-251 MG with MTA1 polyclonal antibody (Cat # PAB30742) (Green) shows positivity in nucleus but excluded from the nucleoli.

Specification

Product Description	Rabbit polyclonal antibody raised against partial recombinant human MTA1.
Immunogen	Recombinant protein corresponding to human MTA1.
Sequence	LEAVLRYLETHPRPPKDPVKSVSSVLSSLTPAKVAPVINNGSPTILGKRSEYEQHNGVDGNMKKR LLMPSRGLANHGQTRHMGPSRNLLNGKSYPTKVRLIRGGSLPPVKRRRMNWIDAPDDVFYMAT EETRKIRKLLSSSETK
Host	Rabbit

Reactivity	Human
Form	Liquid
Purification	Antigen affinity purification
Isotype	IgG
Recommend Usage	Immunofluorescence (1-4 ug/mL) Immunohistochemistry (Formalin/PFA-fixed paraffin-embedded sections) (1:200-1:500) The optimal working dilution should be determined by the end user.
Storage Buffer	In PBS, pH 7.2 (40% glycerol, 0.02% sodium azide).
Storage Instruction	Store at 4°C. For long term storage store at -20°C. Aliquot to avoid repeated freezing and thawing.
Note	This product contains sodium azide: a POISONOUS AND HAZARDOUS SUBSTANCE which should be handled by trained staff only.

Applications

- Immunohistochemistry (Formalin/PFA-fixed paraffin-embedded sections)

Immunohistochemical staining (Formalin-fixed paraffin-embedded sections) of human cerebral cortex with MTA1 polyclonal antibody (Cat # PAB30742) shows strong nuclear positivity in neuronal cells.

- Immunofluorescence

Immunofluorescent staining of U-251 MG with MTA1 polyclonal antibody (Cat # PAB30742) (Green) shows positivity in nucleus but excluded from the nucleoli.

Gene Info — MTA1

Entrez GeneID	9112
Protein Accession#	Q13330
Gene Name	MTA1
Gene Alias	-
Gene Description	metastasis associated 1
Omim ID	603526
Gene Ontology	Hyperlink

Gene Summary

This gene encodes a protein that was identified in a screen for genes expressed in metastatic cells, specifically, mammary adenocarcinoma cell lines. Expression of this gene has been correlated with the metastatic potential of at least two types of carcinomas although it is also expressed in many normal tissues. The role it plays in metastasis is unclear. It was initially thought to be the 70kD component of a nucleosome remodeling deacetylase complex, NuRD, but it is more likely that this component is a different but very similar protein. These two proteins are so closely related, though, that they share the same types of domains. These domains include two DNA binding domains, a dimerization domain, and a domain commonly found in proteins that methylate DNA. The profile and activity of this gene product suggest that it is involved in regulating transcription and that this may be accomplished by chromatin remodeling. [provided by RefSeq]

Other Designations

metastasis associated gene 1 protein|metastasis associated protein

Disease

- [Breast cancer](#)
- [Breast Neoplasms](#)
- [Genetic Predisposition to Disease](#)
- [Neoplasm Metastasis](#)
- [Neoplasms](#)
- [Obesity](#)