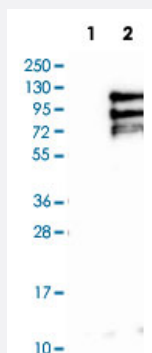


TPX2 polyclonal antibody

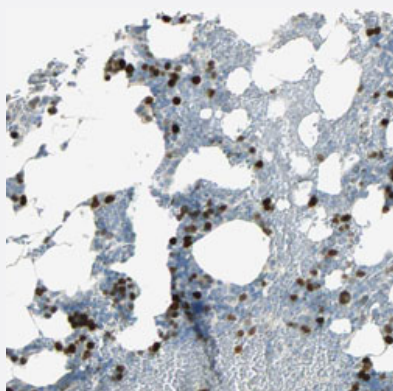
Catalog # PAB30737 Size 100 uL

Applications



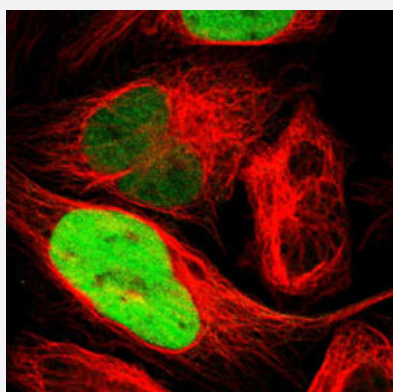
Western Blot (Transfected lysate)

Western Blot analysis of Lane 1: negative control (vector only transfected HEK293T cell lysate) and Lane 2: over-expression lysate (co-expressed with a C-terminal myc-DDK tag in mammalian HEK293T cells) with TPX2 polyclonal antibody (Cat # PAB30737).



Immunohistochemistry (Formalin/PFA-fixed paraffin-embedded sections)

Immunohistochemical staining (Formalin-fixed paraffin-embedded sections) of human bone marrow with TPX2 polyclonal antibody (Cat # PAB30737) shows strong nuclear positivity in bone marrow poietic cells.



Immunofluorescence

Immunofluorescent staining of U-2 OS with TPX2 polyclonal antibody (Cat # PAB30737) (Green) shows positivity in nucleus but excluded from the nucleoli.

Specification

Product Description	Rabbit polyclonal antibody raised against partial recombinant human TPX2.
Immunogen	Recombinant protein corresponding to human TPX2.
Sequence	QELEKSMKMQQEVVEMRKKNEEFKKLALAGIGQPVKKSVSQVTKSVDFHFRTDERIKQHPKNQE EYKEVNFTSELRKHPSSPARVTKGCTIVKPFNLSQGKKRTFDETVSTYVPLAQQVEDFHKRTPNR YHLRSKKD
Host	Rabbit
Reactivity	Human
Form	Liquid
Purification	Antigen affinity purification
Isotype	IgG
Recommend Usage	Immunofluorescence (1-4 ug/mL) Immunohistochemistry (Formalin/PFA-fixed paraffin-embedded sections) (1:50-1:200) Western Blot (1:100-1:250) The optimal working dilution should be determined by the end user.
Storage Buffer	In PBS, pH 7.2 (40% glycerol, 0.02% sodium azide).
Storage Instruction	Store at 4°C. For long term storage store at -20°C. Aliquot to avoid repeated freezing and thawing.
Note	This product contains sodium azide: a POISONOUS AND HAZARDOUS SUBSTANCE which should be handled by trained staff only.

Applications

- Western Blot (Transfected lysate)

Western Blot analysis of Lane 1: negative control (vector only transfected HEK293T cell lysate) and Lane 2: over-expression lysate (co-expressed with a C-terminal myc-DDK tag in mammalian HEK293T cells) with TPX2 polyclonal antibody (Cat # PAB30737).

- Immunohistochemistry (Formalin/PFA-fixed paraffin-embedded sections)

Immunohistochemical staining (Formalin-fixed paraffin-embedded sections) of human bone marrow with TPX2 polyclonal antibody (Cat # PAB30737) shows strong nuclear positivity in bone marrow poietic cells.

- Immunofluorescence

Immunofluorescent staining of U-2 OS with TPX2 polyclonal antibody (Cat # PAB30737) (Green) shows positivity in nucleus but excluded from the nucleoli.

Gene Info — TPX2

Entrez GeneID [22974](#)**Protein Accession#** [Q9ULW0](#)**Gene Name** TPX2**Gene Alias** C20orf1, C20orf2, DIL-2, DIL2, FLS353, GD:C20orf1, HCA519, HCTP4, REPP86, p100**Gene Description** TPX2, microtubule-associated, homolog (Xenopus laevis)**Omim ID** [605917](#)**Gene Ontology** [Hyperlink](#)**Gene Summary** microtubule-associated**Other Designations** TPX2, microtubule-associated protein homolog|differentially expressed in lung cells|hepatocellular carcinoma-associated antigen 519|preferentially expressed in colorectal cancer|restricted expression proliferation associated protein 100|targeting protein

Disease

- [Genetic Predisposition to Disease](#)
- [Hematologic Diseases](#)
- [Occupational Diseases](#)