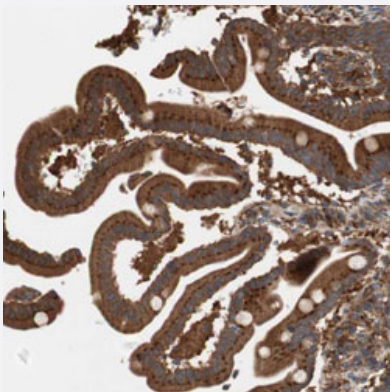


# FMNL2 polyclonal antibody

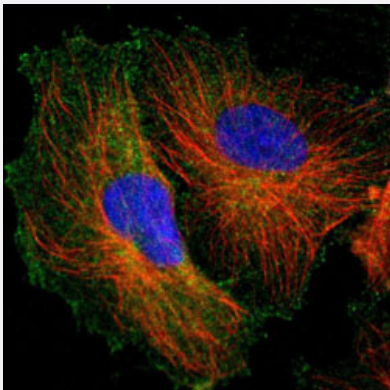
Catalog # PAB30732      Size 100 uL

## Applications



### Immunohistochemistry (Formalin/PFA-fixed paraffin-embedded sections)

Immunohistochemical staining (Formalin-fixed paraffin-embedded sections) of human duodenum with FMNL2 polyclonal antibody (Cat # PAB30732) shows strong cytoplasmic positivity in glandular cells.



### Immunofluorescence

Immunofluorescent staining of U-251 MG with FMNL2 polyclonal antibody (Cat # PAB30732) (Green) shows positivity in plasma membrane and cytoplasm.

## Specification

Product Description	Rabbit polyclonal antibody raised against partial recombinant human FMNL2.
Immunogen	Recombinant protein corresponding to human FMNL2.
Sequence	ERVEELEENISHLSEKLQDTENEAMSKIVELEKQLMQRNKELDVVREYKDANTQVHTLRKMOVKE KEEAIQRQSTLEKKIHELEKQGTIKIQKKGDGDIAILPVVASGTLMSGSEVVAGNSVGP
Host	Rabbit
Reactivity	Human

Form	Liquid
Purification	Antigen affinity purification
Isotype	IgG
Recommend Usage	Immunofluorescence (1-4 ug/mL) Immunohistochemistry (Formalin/PFA-fixed paraffin-embedded sections) (1:50-1:200) The optimal working dilution should be determined by the end user.
Storage Buffer	In PBS, pH 7.2 (40% glycerol, 0.02% sodium azide).
Storage Instruction	Store at 4°C. For long term storage store at -20°C. Aliquot to avoid repeated freezing and thawing.
Note	This product contains sodium azide: a POISONOUS AND HAZARDOUS SUBSTANCE which should be handled by trained staff only.

## Applications

- Immunohistochemistry (Formalin/PFA-fixed paraffin-embedded sections)

Immunohistochemical staining (Formalin-fixed paraffin-embedded sections) of human duodenum with FMNL2 polyclonal antibody (Cat # PAB30732) shows strong cytoplasmic positivity in glandular cells.

- Immunofluorescence

Immunofluorescent staining of U-251 MG with FMNL2 polyclonal antibody (Cat # PAB30732) (Green) shows positivity in plasma membrane and cytoplasm.

## Gene Info — FMNL2

Entrez GeneID	<a href="#">114793</a>
Protein Accession#	<a href="#">Q96PY5</a>
Gene Name	FMNL2
Gene Alias	FHOD2, FLJ37546
Gene Description	formin-like 2
Gene Ontology	<a href="#">Hyperlink</a>
Gene Summary	This gene encodes a formin-related protein. Formin-related proteins have been implicated in morphogenesis, cytokinesis, and cell polarity. Alternatively spliced transcript variants encoding different isoforms have been described but their full-length nature has yet to be determined. [provided by RefSeq]

**Other Designations**

formin homology 2 domain containing 2

**Disease**

- [Autistic Disorder](#)
- [Genetic Predisposition to Disease](#)
- [Tobacco Use Disorder](#)