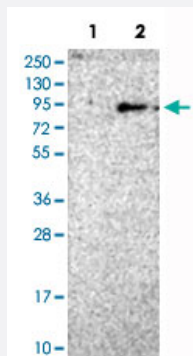


# RAD17 polyclonal antibody

Catalog # PAB30729

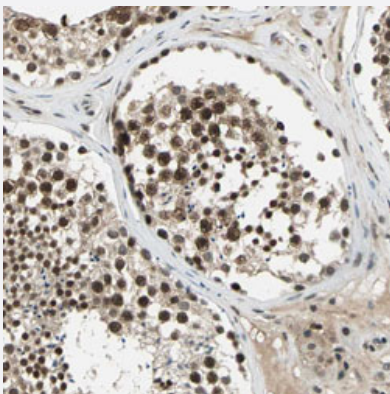
Size 100 uL

## Applications



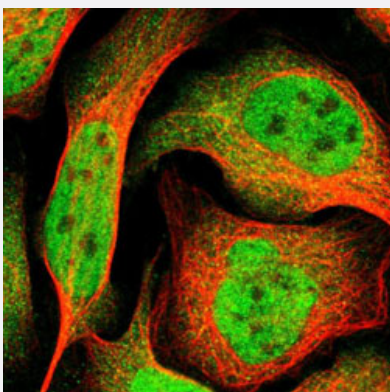
### Western Blot (Transfected lysate)

Western Blot analysis of Lane 1: negative control (vector only transfected HEK293T cell lysate) and Lane 2: over-expression lysate (co-expressed with a C-terminal myc-DDK tag in mammalian HEK293T cells) with RAD17 polyclonal antibody (Cat # PAB30729).



### Immunohistochemistry (Formalin/PFA-fixed paraffin-embedded sections)

Immunohistochemical staining (Formalin-fixed paraffin-embedded sections) of human testis with RAD17 polyclonal antibody (Cat # PAB30729) shows strong nuclear positivity in cells in seminiferous ducts.



### Immunofluorescence

Immunofluorescent staining of U-2 OS with RAD17 polyclonal antibody (Cat # PAB30729) (Green) shows positivity in nucleus but excluded from the nucleoli.

## Specification

<b>Product Description</b>	Rabbit polyclonal antibody raised against partial recombinant human RAD17.
<b>Immunogen</b>	Recombinant protein corresponding to human RAD17.
<b>Sequence</b>	SKEHGIQVQEWINPVLPDFQKDDFKGMFNTSSFHMFYQSQIAVFKEFLLRATKYNKLQMLGDD LRTDKKILVEDLPNQFYRDSHTLHEVLRKYVRIGRCPLIFIISDSLSGDNNQRLLFPKEIQECSISNIS FNPVAP
<b>Host</b>	Rabbit
<b>Reactivity</b>	Human
<b>Form</b>	Liquid
<b>Purification</b>	Antigen affinity purification
<b>Isotype</b>	IgG
<b>Recommend Usage</b>	Immunofluorescence (1-4 ug/mL) Immunohistochemistry (Formalin/PFA-fixed paraffin-embedded sections) (1:200-1:500) Western Blot (1:100-1:250) The optimal working dilution should be determined by the end user.
<b>Storage Buffer</b>	In PBS, pH 7.2 (40% glycerol, 0.02% sodium azide).
<b>Storage Instruction</b>	Store at 4°C. For long term storage store at -20°C. Aliquot to avoid repeated freezing and thawing.
<b>Note</b>	This product contains sodium azide: a POISONOUS AND HAZARDOUS SUBSTANCE which should be handled by trained staff only.

## Applications

- Western Blot (Transfected lysate)

Western Blot analysis of Lane 1: negative control (vector only transfected HEK293T cell lysate) and Lane 2: over-expression lysate (co-expressed with a C-terminal myc-DDK tag in mammalian HEK293T cells) with RAD17 polyclonal antibody (Cat # PAB30729).

- Immunohistochemistry (Formalin/PFA-fixed paraffin-embedded sections)

Immunohistochemical staining (Formalin-fixed paraffin-embedded sections) of human testis with RAD17 polyclonal antibody (Cat # PAB30729) shows strong nuclear positivity in cells in seminiferous ducts.

- Immunofluorescence

Immunofluorescent staining of U-2 OS with RAD17 polyclonal antibody (Cat # PAB30729) (Green) shows positivity in nucleus but excluded from the nucleoli.

## Gene Info — RAD17

Entrez GeneID [5884](#)

Protein Accession# [O75943](#)

Gene Name RAD17

Gene Alias CCYC, FLJ41520, HRAD17, R24L, RAD17SP, RAD24

Gene Description RAD17 homolog (S. pombe)

Omim ID [603139](#)

Gene Ontology [Hyperlink](#)

**Gene Summary**

The protein encoded by this gene is highly similar to the gene product of Schizosaccharomyces pombe rad17, a cell cycle checkpoint gene required for cell cycle arrest and DNA damage repair in response to DNA damage. This protein shares strong similarity with DNA replication factor C (RFC), and can form a complex with RFCs. This protein binds to chromatin prior to DNA damage and is phosphorylated by the checkpoint kinase ATR following damage. This protein recruits the RAD1-RAD9-HUS1 checkpoint protein complex onto chromatin after DNA damage, which may be required for its phosphorylation. The phosphorylation of this protein is required for the DNA-damage-induced cell cycle G2 arrest, and is thought to be a critical early event during checkpoint signaling in DNA-damaged cells. Eight alternatively spliced transcript variants of this gene, which encode for four distinct proteins, have been reported. Two pseudogenes, located on chromosomes 7 and 13, have been identified. [provided by RefSeq]

**Other Designations**

OTTHUMP00000125189|OTTHUMP00000125190|OTTHUMP00000125192|OTTHUMP00000125193|OTTHUMP00000125194|RAD1 homolog|RAD17 homolog|RF-C activator 1 homolog|Rad17-like protein|cell cycle checkpoint protein (RAD17)

## Disease

- [Breast cancer](#)
- [Breast Neoplasms](#)
- [Genetic Predisposition to Disease](#)