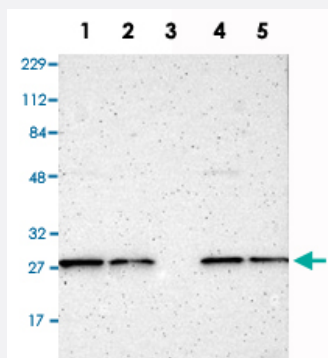


CLEC4E polyclonal antibody

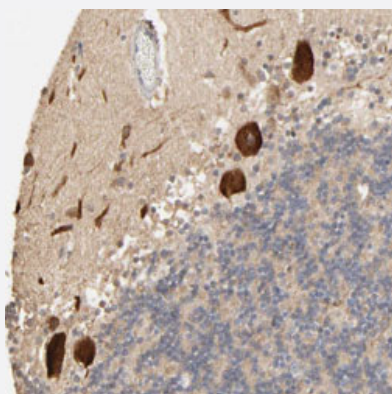
Catalog # PAB30725 Size 100 uL

Applications



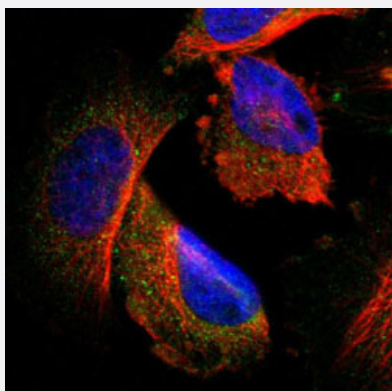
Western Blot

Western Blot analysis of Lane 1: RT-4, Lane 2: U-251MG sp, Lane 3: human plasma (IgG/HSA depleted), Lane 4: human liver and Lane 5: human tonsil lysates with CLEC4E polyclonal antibody (Cat # PAB30725).



Immunohistochemistry (Formalin/PFA-fixed paraffin-embedded sections)

Immunohistochemical staining (Formalin-fixed paraffin-embedded sections) of human cerebellum with CLEC4E polyclonal antibody (Cat # PAB30725) shows strong cytoplasmic positivity in Purkinje cells.



Immunofluorescence

Immunofluorescent staining of U-251 MG with CLEC4E polyclonal antibody (Cat # PAB30725) (Green) shows positivity in cytoplasm.

Specification

Product Description	Rabbit polyclonal antibody raised against partial recombinant human CLEC4E.
Immunogen	Recombinant protein corresponding to human CLEC4E.
Sequence	SCYFFSTDTISWALSLKNCSAMGAHLVVINSQEEQEFLSYKKPKMREFFIGLSDQVVEGQWQWV DGTPLTkSLSFWDVGEpNNIATLEDcATMRDSSNPRQNWNDVTCFLNYFRI
Host	Rabbit
Reactivity	Human
Form	Liquid
Purification	Antigen affinity purification
Isotype	IgG
Recommend Usage	Immunofluorescence (1-4 ug/mL) Immunohistochemistry (Formalin/PFA-fixed paraffin-embedded sections) (1:50-1:200) Western Blot (1:100-1:250) The optimal working dilution should be determined by the end user.
Storage Buffer	In PBS, pH 7.2 (40% glycerol, 0.02% sodium azide).
Storage Instruction	Store at 4°C. For long term storage store at -20°C. Aliquot to avoid repeated freezing and thawing.
Note	This product contains sodium azide: a POISONOUS AND HAZARDOUS SUBSTANCE which should be handled by trained staff only.

Applications

- Western Blot

Western Blot analysis of Lane 1: RT-4, Lane 2: U-251MG sp, Lane 3: human plasma (IgG/HSA depleted), Lane 4: human liver and Lane 5: human tonsil lysates with CLEC4E polyclonal antibody (Cat # PAB30725).

- Immunohistochemistry (Formalin/PFA-fixed paraffin-embedded sections)

Immunohistochemical staining (Formalin-fixed paraffin-embedded sections) of human cerebellum with CLEC4E polyclonal antibody (Cat # PAB30725) shows strong cytoplasmic positivity in Purkinje cells.

- Immunofluorescence

Immunofluorescent staining of U-251 MG with CLEC4E polyclonal antibody (Cat # PAB30725) (Green) shows positivity in cytoplasm.

Gene Info — CLEC4E

Entrez GeneID [26253](#)**Protein Accession#** [Q9ULY5](#)**Gene Name** CLEC4E**Gene Alias** CLECSF9, MINCLE**Gene Description** C-type lectin domain family 4, member E**Omim ID** [609962](#)**Gene Ontology** [Hyperlink](#)

Gene Summary

This gene encodes a member of the C-type lectin/C-type lectin-like domain (CTL/CTLD) superfamily. Members of this family share a common protein fold and have diverse functions, such as cell adhesion, cell-cell signalling, glycoprotein turnover, and roles in inflammation and immune response. The encoded type II transmembrane protein is a downstream target of CCAAT/enhancer binding protein (C/EBP), beta (CEBPB) and may play a role in inflammation. Alternative splice variants have been described but their full-length sequence has not been determined. This gene is closely linked to other CTL/CTLD superfamily members on chromosome 12p13 in the natural killer gene complex region. [provided by RefSeq]

Other Designations C-type (calcium dependent, carbohydrate-recognition domain) lectin, superfamily member 9|macrophage-inducible C-type lectin