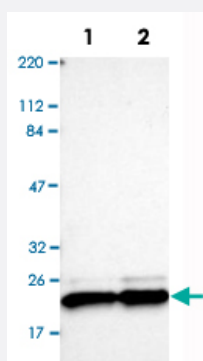


# CBX3 polyclonal antibody

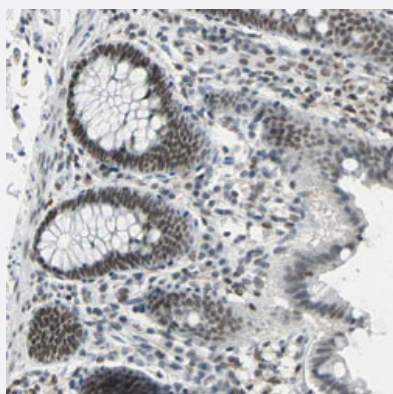
Catalog # PAB30722      Size 100 uL

## Applications



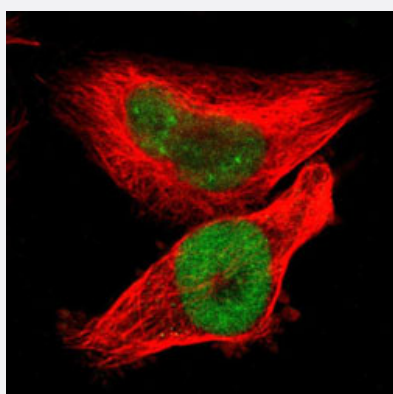
### Western Blot (Cell lysate)

Western Blot analysis of Lane 1: RT-4 and Lane 2: U-251MG sp cell lysates with CBX3 polyclonal antibody (Cat # PAB30722).



### Immunohistochemistry (Formalin/PFA-fixed paraffin-embedded sections)

Immunohistochemical staining (Formalin-fixed paraffin-embedded sections) of human colon with CBX3 polyclonal antibody (Cat # PAB30722) shows distinct nuclear positivity in glandular cells.



### Immunofluorescence

Immunofluorescent staining of U-251 MG with CBX3 polyclonal antibody (Cat # PAB30722) (Green) shows positivity in nucleus but excluded from the nucleoli.

## Specification

<b>Product Description</b>	Rabbit polyclonal antibody raised against partial recombinant human CBX3.
<b>Immunogen</b>	Recombinant protein corresponding to human CBX3.
<b>Sequence</b>	RVVNGKVEYFLKWKGFTDADNTWEPEENLDCPELIEAFLNSQKAGKEKDGTKRKSLSDSESDD SKSKKKRDAADKPRGFARGLDPERIIGATDSSGELMFLMKWKDSDEA
<b>Host</b>	Rabbit
<b>Reactivity</b>	Human
<b>Form</b>	Liquid
<b>Purification</b>	Antigen affinity purification
<b>Isotype</b>	IgG
<b>Recommend Usage</b>	Immunofluorescence (1-4 ug/mL) Immunohistochemistry (Formalin/PFA-fixed paraffin-embedded sections) (1:50-1:200) Western Blot (1:100-1:250) The optimal working dilution should be determined by the end user.
<b>Storage Buffer</b>	In PBS, pH 7.2 (40% glycerol, 0.02% sodium azide).
<b>Storage Instruction</b>	Store at 4°C. For long term storage store at -20°C. Aliquot to avoid repeated freezing and thawing.
<b>Note</b>	This product contains sodium azide: a POISONOUS AND HAZARDOUS SUBSTANCE which should be handled by trained staff only.

## Applications

- Western Blot (Cell lysate)

Western Blot analysis of Lane 1: RT-4 and Lane 2: U-251MG sp cell lysates with CBX3 polyclonal antibody (Cat # PAB30722).

- Immunohistochemistry (Formalin/PFA-fixed paraffin-embedded sections)

Immunohistochemical staining (Formalin-fixed paraffin-embedded sections) of human colon with CBX3 polyclonal antibody (Cat # PAB30722) shows distinct nuclear positivity in glandular cells.

- Immunofluorescence

Immunofluorescent staining of U-251 MG with CBX3 polyclonal antibody (Cat # PAB30722) (Green) shows positivity in nucleus but excluded from the nucleoli.

## Gene Info — CBX3

**Entrez GeneID** [11335](#)

**Protein Accession#** [Q13185](#)

**Gene Name** CBX3

**Gene Alias** HECH, HP1-GAMMA, HP1Hs-gamma

**Gene Description** chromobox homolog 3 (HP1 gamma homolog, Drosophila)

**Omim ID** [604477](#)

**Gene Ontology** [Hyperlink](#)

**Gene Summary** At the nuclear envelope, the nuclear lamina and heterochromatin are adjacent to the inner nuclear membrane. The protein encoded by this gene binds DNA and is a component of heterochromatin. This protein also can bind lamin B receptor, an integral membrane protein found in the inner nuclear membrane. The dual binding functions of the encoded protein may explain the association of heterochromatin with the inner nuclear membrane. Two transcript variants encoding the same protein but differing in the 5' UTR, have been found for this gene. [provided by RefSeq]

**Other Designations** HP1 gamma homolog|OTTHUMP00000024529|OTTHUMP00000122519|chromobox homolog 3|heterochromatin protein HP1 gamma|heterochromatin-like protein 1