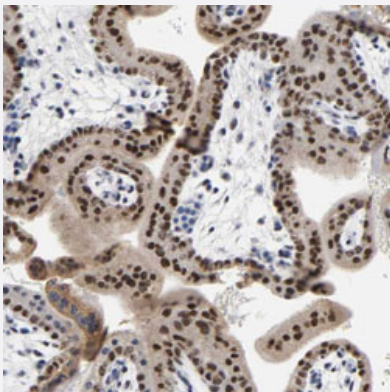


GRHL2 polyclonal antibody

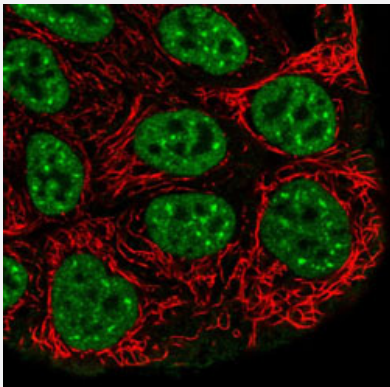
Catalog # PAB30713 Size 100 uL

Applications



Immunohistochemistry (Formalin/PFA-fixed paraffin-embedded sections)

Immunohistochemical staining (Formalin-fixed paraffin-embedded sections) of human placenta with GRHL2 polyclonal antibody (Cat # PAB30713) shows strong nuclear positivity in trophoblastic cells.



Immunofluorescence

Immunofluorescent staining of RT-4 cells with GRHL2 polyclonal antibody (Cat # PAB30713) (Green) shows positivity in plasma membrane and nucleus but excluded from the nucleoli.

Specification

Product Description	Rabbit polyclonal antibody raised against partial recombinant human GRHL2.
Immunogen	Recombinant protein corresponding to human GRHL2.
Sequence	NRVQVLKTVPVNLSLNQDHLNSKREQYSISFPESSAIPVSGITVVKAEFTPVFMAPPVHYPRG DGEEQRRVIFEQTQYDVPSLATHSAYLKDDQRSTPDSTYSESFKDAATEKFRSASVGAEEMYD QTSSGTFQYTLATKSLRQK
Host	Rabbit

Reactivity	Human
Form	Liquid
Purification	Antigen affinity purification
Isotype	IgG
Recommend Usage	Immunofluorescence (1-4 ug/mL) Immunohistochemistry (Formalin/PFA-fixed paraffin-embedded sections) (1:500-1:1000) The optimal working dilution should be determined by the end user.
Storage Buffer	In PBS, pH 7.2 (40% glycerol, 0.02% sodium azide).
Storage Instruction	Store at 4°C. For long term storage store at -20°C. Aliquot to avoid repeated freezing and thawing.
Note	This product contains sodium azide: a POISONOUS AND HAZARDOUS SUBSTANCE which should be handled by trained staff only.

Applications

- Immunohistochemistry (Formalin/PFA-fixed paraffin-embedded sections)

Immunohistochemical staining (Formalin-fixed paraffin-embedded sections) of human placenta with GRHL2 polyclonal antibody (Cat # PAB30713) shows strong nuclear positivity in trophoblastic cells.

- Immunofluorescence

Immunofluorescent staining of RT-4 cells with GRHL2 polyclonal antibody (Cat # PAB30713) (Green) shows positivity in plasma membrane and nucleus but excluded from the nucleoli.

Gene Info — GRHL2

Entrez GeneID	79977
Protein Accession#	Q6ISB3
Gene Name	GRHL2
Gene Alias	BOM, DFNA28, FLJ11172, FLJ13782, MGC149294, MGC149295, TFCEP2L3
Gene Description	grainyhead-like 2 (Drosophila)
Omim ID	608576 608641
Gene Ontology	Hyperlink

Gene Summary

The protein encoded by this gene is a transcription factor that can act as a homodimer or as a heterodimer with either GRHL1 or GRHL3. Defects in this gene are a cause of non-syndromic sensorineural deafness autosomal dominant type 28 (DFNA28)

Other Designations

transcription factor CP2-like 3

Disease

- [Genetic Predisposition to Disease](#)
- [Presbycusis](#)
- [Tobacco Use Disorder](#)