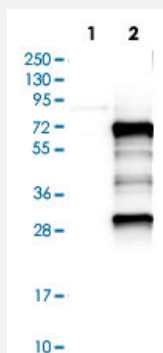


MEF2D polyclonal antibody

Catalog # PAB30710

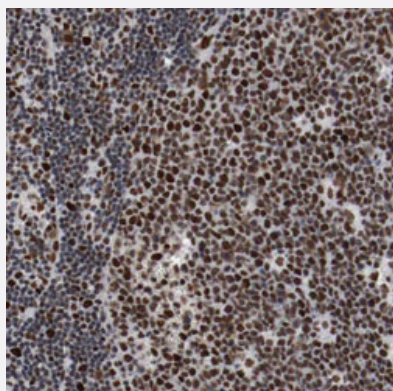
Size 100 uL

Applications



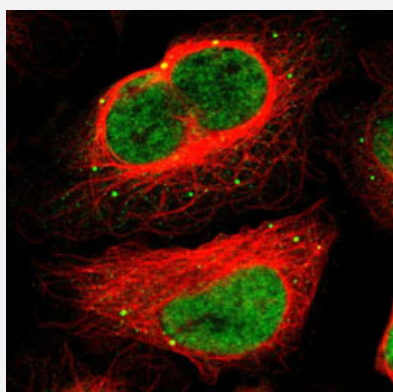
Western Blot (Transfected lysate)

Western Blot analysis of Lane 1: negative control (vector only transfected HEK293T cell lysate) and Lane 2: over-expression lysate (co-expressed with a C-terminal myc-DDK tag in mammalian HEK293T cells) with MEF2D polyclonal antibody (Cat # PAB30710).



Immunohistochemistry (Formalin/PFA-fixed paraffin-embedded sections)

Immunohistochemical staining (Formalin-fixed paraffin-embedded sections) of human lymph node with MEF2D polyclonal antibody (Cat # PAB30710) shows strong nuclear positivity in reaction center cells and lymphoid cells outside reaction center.



Immunofluorescence

Immunofluorescent staining of U-2 OS with MEF2D polyclonal antibody (Cat # PAB30710) (Green) shows positivity in vesicles and nucleus but excluded from the nucleoli.

Specification

Product Description	Rabbit polyclonal antibody raised against partial recombinant human MEF2D.
Immunogen	Recombinant protein corresponding to human MEF2D.
Sequence	VPVSNQSSLQFSNPSGSLVTPSLVTSSLTDPRLSPQQPALQRNSVSPGLPQRPASAGAMLGG DLNSANGACPSPVGNGYVSARASPGLLPVANGNSLNKVIPAKSPPPPTHSTQLGAPSRKPDLRVI TSQAG
Host	Rabbit
Reactivity	Human
Form	Liquid
Purification	Antigen affinity purification
Isotype	IgG
Recommend Usage	Immunofluorescence (1-4 ug/mL) Immunohistochemistry (Formalin/PFA-fixed paraffin-embedded sections) (1:200-1:500) Western Blot (1:100-1:250) The optimal working dilution should be determined by the end user.
Storage Buffer	In PBS, pH 7.2 (40% glycerol, 0.02% sodium azide).
Storage Instruction	Store at 4°C. For long term storage store at -20°C. Aliquot to avoid repeated freezing and thawing.
Note	This product contains sodium azide: a POISONOUS AND HAZARDOUS SUBSTANCE which should be handled by trained staff only.

Applications

- Western Blot (Transfected lysate)

Western Blot analysis of Lane 1: negative control (vector only transfected HEK293T cell lysate) and Lane 2: over-expression lysate (co-expressed with a C-terminal myc-DDK tag in mammalian HEK293T cells) with MEF2D polyclonal antibody (Cat # PAB30710).

- Immunohistochemistry (Formalin/PFA-fixed paraffin-embedded sections)

Immunohistochemical staining (Formalin-fixed paraffin-embedded sections) of human lymph node with MEF2D polyclonal antibody (Cat # PAB30710) shows strong nuclear positivity in reaction center cells and lymphoid cells outside reaction center.

- Immunofluorescence

Immunofluorescent staining of U-2 OS with MEF2D polyclonal antibody (Cat # PAB30710) (Green) shows positivity in vesicles and nucleus but excluded from the nucleoli.

Gene Info — MEF2D

Entrez GeneID	4209
Protein Accession#	Q14814
Gene Name	MEF2D
Gene Alias	DKFZp686i1536
Gene Description	myocyte enhancer factor 2D
Omim ID	600663
Gene Ontology	Hyperlink
Gene Summary	polypeptide D (myocyte enhancer factor 2D) MEF2D/DAZAP1 fusion OTTHUMP00000031810 m yocyte enhancer factor 2D/deleted in azoospermia associated protein 1 fusion protein
Other Designations	MADS box transcription enhancer factor 2, polypeptide D (myocyte enhancer factor 2D) MEF2D/DAZAP1 fusion OTTHUMP00000031810 myocyte enhancer factor 2D/deleted in azoospermia as sociated protein 1 fusion protein

Disease

- [Cardiovascular Diseases](#)
- [Cerebral Hemorrhage](#)
- [Diabetes Mellitus](#)
- [Edema](#)
- [Genetic Predisposition to Disease](#)
- [Hypertension](#)
- [Intracranial Hemorrhages](#)
- [Stroke](#)
- [Subarachnoid Hemorrhage](#)