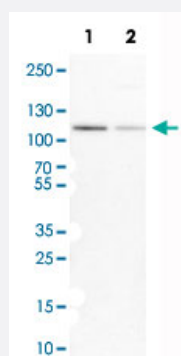


MCM3 polyclonal antibody

Catalog # PAB30708

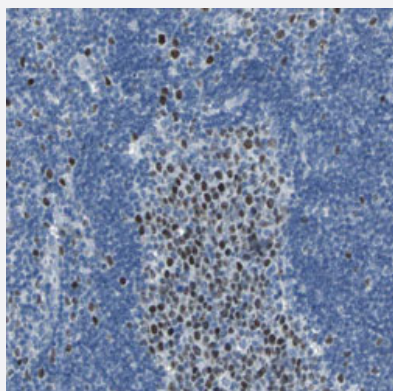
Size 100 uL

Applications



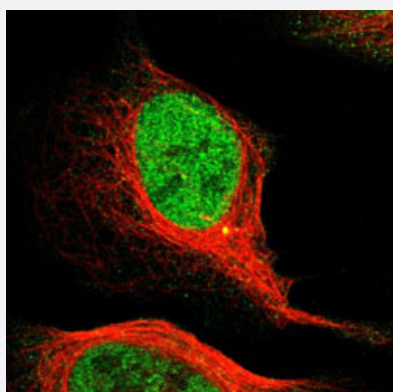
Western Blot (Cell lysate)

Western Blot analysis of Lane 1: NIH-3T3 cell lysate (mouse embryonic fibroblast cells) and Lane 2: NBT-II cell lysate (Wistar rat bladder tumor cells) with MCM3 polyclonal antibody (Cat # PAB30708).



Immunohistochemistry (Formalin/PFA-fixed paraffin-embedded sections)

Immunohistochemical staining (Formalin-fixed paraffin-embedded sections) of human lymph node with MCM3 polyclonal antibody (Cat # PAB30708) shows strong nuclear positivity in reaction center cells.



Immunofluorescence

Immunofluorescent staining of U-2 OS with MCM3 polyclonal antibody (Cat # PAB30708) (Green) shows positivity in centrosome and nucleus but excluded from the nucleoli.

Specification

Product Description	Rabbit polyclonal antibody raised against partial recombinant human MCM3.
Immunogen	Recombinant protein corresponding to human MCM3.
Sequence	TYAKQYEEFYVGLGSGSKHVSPTLTSCFLSCVVCVEGNTKCSLVRPKVVRSVHYCPATKKTI ERRYSDLTTLVAFPSSSVYPTKDEENNPLETEYGLSVYKDHQTITIQEMPEKAPAGQLPRSVDVILD DDLVDK
Host	Rabbit
Reactivity	Human, Mouse, Rat
Form	Liquid
Purification	Antigen affinity purification
Isotype	IgG
Recommend Usage	Immunofluorescence (1-4 ug/mL) Immunohistochemistry (Formalin/PFA-fixed paraffin-embedded sections) (1:50-1:200) Western Blot (1:100-1:250) The optimal working dilution should be determined by the end user.
Storage Buffer	In PBS, pH 7.2 (40% glycerol, 0.02% sodium azide).
Storage Instruction	Store at 4°C. For long term storage store at -20°C. Aliquot to avoid repeated freezing and thawing.
Note	This product contains sodium azide: a POISONOUS AND HAZARDOUS SUBSTANCE which should be handled by trained staff only.

Applications

- Western Blot (Cell lysate)

Western Blot analysis of Lane 1: NIH-3T3 cell lysate (mouse embryonic fibroblast cells) and Lane 2: NBT-II cell lysate (Wistar rat bladder tumor cells) with MCM3 polyclonal antibody (Cat # PAB30708).

- Immunohistochemistry (Formalin/PFA-fixed paraffin-embedded sections)

Immunohistochemical staining (Formalin-fixed paraffin-embedded sections) of human lymph node with MCM3 polyclonal antibody (Cat # PAB30708) shows strong nuclear positivity in reaction center cells.

- Immunofluorescence

Immunofluorescent staining of U-2 OS with MCM3 polyclonal antibody (Cat # PAB30708) (Green) shows positivity in centrosome and nucleus but excluded from the nucleoli.

Gene Info — MCM3

Entrez GeneID [4172](#)

Protein Accession# [P25205](#)

Gene Name MCM3

Gene Alias HCC5, MGC1157, P1-MCM3, P1.h, RLFB

Gene Description minichromosome maintenance complex component 3

Omim ID [602693](#)

Gene Ontology [Hyperlink](#)

Gene Summary

The protein encoded by this gene is one of the highly conserved mini-chromosome maintenance proteins (MCM) that are involved in the initiation of eukaryotic genome replication. The hexameric protein complex formed by MCM proteins is a key component of the pre-replication complex (pre-RC) and may be involved in the formation of replication forks and in the recruitment of other DNA replication related proteins. This protein is a subunit of the protein complex that consists of MCM2-7. It has been shown to interact directly with MCM5/CDC46. This protein also interacts with, and is thus acetylated by MCM3AP, a chromatin-associated acetyltransferase. The acetylation of this protein inhibits the initiation of DNA replication and cell cycle progression. [provided by RefSeq]

Other Designations

DNA polymerase alpha holoenzyme-associated protein P1|DNA replication factor MCM3|MCM3 minichromosome maintenance deficient 3|OTTHUMP00000016600|cervical cancer proto-oncogene 5|hRlf beta subunit|minichromosome maintenance deficient 3|replication licensin

Pathway

- [Cell cycle](#)
- [DNA replication](#)