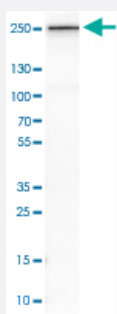


TLN1 polyclonal antibody

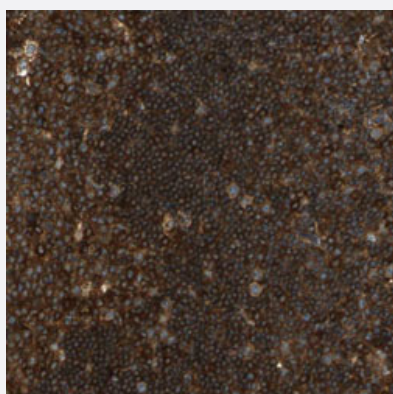
Catalog # PAB30703 Size 100 uL

Applications



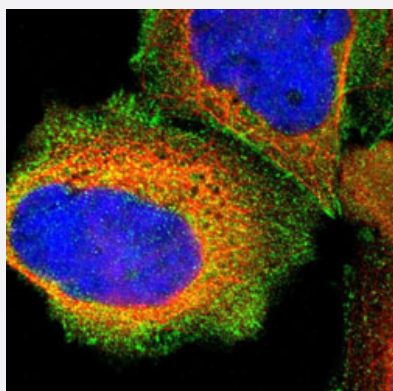
Western Blot (Tissue lysate)

Western Blot analysis of human lung tissue lysate with TLN1 polyclonal antibody (Cat # PAB30703).



Immunohistochemistry (Formalin/PFA-fixed paraffin-embedded sections)

Immunohistochemical staining (Formalin-fixed paraffin-embedded sections) of human lymph node with TLN1 polyclonal antibody (Cat # PAB30703) shows strong cytoplasmic positivity.



Immunofluorescence

Immunofluorescent staining of A-431 cells with TLN1 polyclonal antibody (Cat # PAB30703) (Green) shows positivity in plasma membrane, cytoplasm and focal adhesion sites.

Specification

Product Description	Rabbit polyclonal antibody raised against partial recombinant human TLN1.
Immunogen	Recombinant protein corresponding to human TLN1.
Sequence	LLYTAKEAGGNPKQAAHTQEAL EEAVQMMTEAVEDLT TTTLNEAASAAGVVGGMVDSITQAINQLD EGPMGEPEGSFVDYQTTMVRTAKAIAVTVQEMVTKSNTSP
Host	Rabbit
Reactivity	Human
Form	Liquid
Purification	Antigen affinity purification
Isotype	IgG
Recommend Usage	Immunofluorescence (1-4 ug/mL) Immunohistochemistry (Formalin/PFA-fixed paraffin-embedded sections) (1:200-1:500) Western Blot (1:100-1:250) The optimal working dilution should be determined by the end user.
Storage Buffer	In PBS, pH 7.2 (40% glycerol, 0.02% sodium azide).
Storage Instruction	Store at 4°C. For long term storage store at -20°C. Aliquot to avoid repeated freezing and thawing.
Note	This product contains sodium azide: a POISONOUS AND HAZARDOUS SUBSTANCE which should be handled by trained staff only.

Applications

- Western Blot (Tissue lysate)

Western Blot analysis of human lung tissue lysate with TLN1 polyclonal antibody (Cat # PAB30703).

- Immunohistochemistry (Formalin/PFA-fixed paraffin-embedded sections)

Immunohistochemical staining (Formalin-fixed paraffin-embedded sections) of human lymph node with TLN1 polyclonal antibody (Cat # PAB30703) shows strong cytoplasmic positivity.

- Immunofluorescence

Immunofluorescent staining of A-431 cells with TLN1 polyclonal antibody (Cat # PAB30703) (Green) shows positivity in plasma membrane, cytoplasm and focal adhesion sites.

Gene Info — TLN1

Entrez GeneID	7094
Protein Accession#	Q9Y490
Gene Name	TLN1
Gene Alias	ILWEQ, KIAA1027, TLN
Gene Description	talin 1
Omim ID	186745
Gene Ontology	Hyperlink
Gene Summary	<p>This gene encodes a cytoskeletal protein that is concentrated in areas of cell-substratum and cell-cell contacts. The encoded protein plays a significant role in the assembly of actin filaments and in spreading and migration of various cell types, including fibroblasts and osteoclasts. It codistributes with integrins in the cell surface membrane in order to assist in the attachment of adherent cells to extracellular matrices and of lymphocytes to other cells. The N-terminus of this protein contains elements for localization to cell-extracellular matrix junctions. The C-terminus contains binding sites for proteins such as beta-1-integrin, actin, and vinculin. [provided by RefSeq]</p>
Other Designations	-

Pathway

- [Focal adhesion](#)