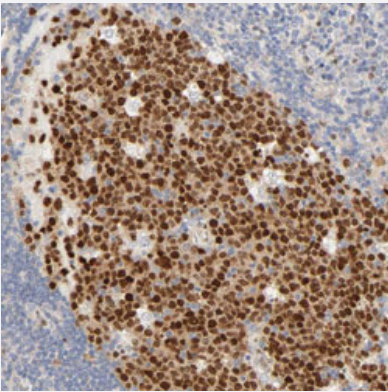


MEF2B polyclonal antibody

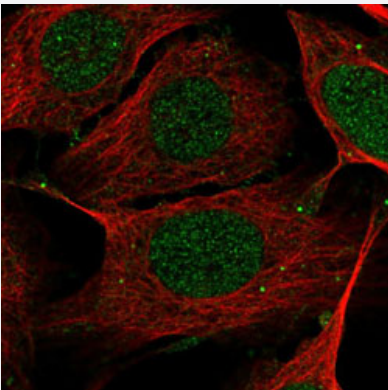
Catalog # PAB30701 Size 100 uL

Applications



Immunohistochemistry (Formalin/PFA-fixed paraffin-embedded sections)

Immunohistochemical staining (Formalin-fixed paraffin-embedded sections) of human lymph node with MEF2B polyclonal antibody (Cat # PAB30701) shows strong nuclear expression in germinal center cells.



Immunofluorescence

Immunofluorescent staining of U-2 OS with MEF2B polyclonal antibody (Cat # PAB30701) (Green) shows positivity in nucleus, cytoplasm and cell junctions.

Specification

Product Description	Rabbit polyclonal antibody raised against partial recombinant human MEF2B.
Immunogen	Recombinant protein corresponding to human MEF2B.
Sequence	VLLKYTEYSEPHESRTNTDILETLKRRGIGLDGPELEPDEGPEEPGEKFRRLAGEGGDPALPRPRL YPAAPAMPSPDVVYGALPPPGCDPSGLGEALPAQSRPSPFRPAAPKAGPPGLVHPLFSPSHLT SKTPPPLYLPTE
Host	Rabbit

Reactivity	Human
Form	Liquid
Purification	Antigen affinity purification
Isotype	IgG
Recommend Usage	Immunofluorescence (1-4 ug/mL) Immunohistochemistry (Formalin/PFA-fixed paraffin-embedded sections) (1:200-1:500) The optimal working dilution should be determined by the end user.
Storage Buffer	In PBS, pH 7.2 (40% glycerol, 0.02% sodium azide).
Storage Instruction	Store at 4°C. For long term storage store at -20°C. Aliquot to avoid repeated freezing and thawing.
Note	This product contains sodium azide: a POISONOUS AND HAZARDOUS SUBSTANCE which should be handled by trained staff only.

Applications

- Immunohistochemistry (Formalin/PFA-fixed paraffin-embedded sections)

Immunohistochemical staining (Formalin-fixed paraffin-embedded sections) of human lymph node with MEF2B polyclonal antibody (Cat # PAB30701) shows strong nuclear expression in germinal center cells.

- Immunofluorescence

Immunofluorescent staining of U-2 OS with MEF2B polyclonal antibody (Cat # PAB30701) (Green) shows positivity in nucleus, cytoplasm and cell junctions.

Disease

- [Cardiovascular Diseases](#)
- [Diabetes Mellitus](#)
- [Edema](#)