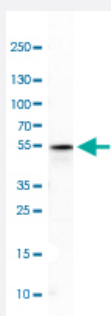


# ARHGAP1 polyclonal antibody

Catalog # PAB30697

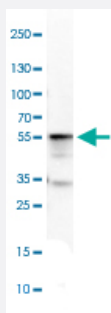
Size 100 uL

## Applications



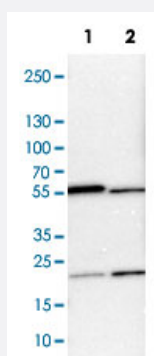
### Western Blot (Tissue lysate)

Western Blot analysis of human cerebral cortex tissue lysate with ARHGAP1 polyclonal antibody (Cat # PAB30697).



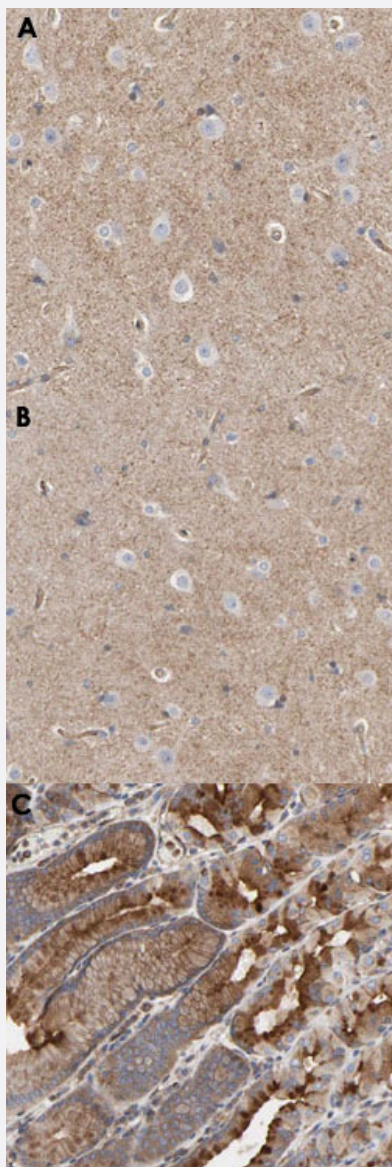
### Western Blot (Tissue lysate)

Western Blot analysis of mouse cerebral cortex tissue lysate with ARHGAP1 polyclonal antibody (Cat # PAB30697).



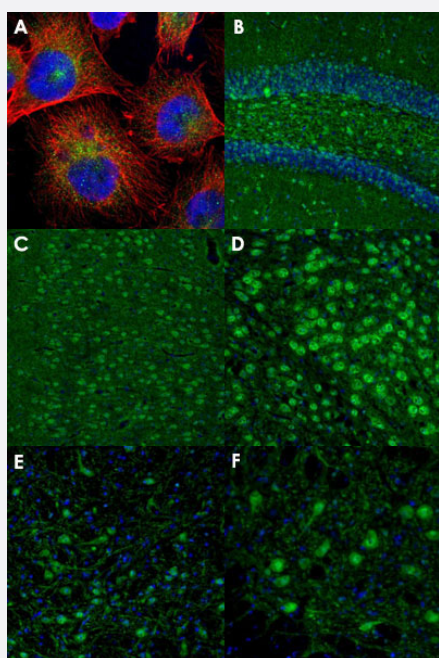
### Western Blot (Cell lysate)

Western Blot analysis of Lane 1: NIH-3T3 cell lysate (mouse embryonic fibroblast cells) and Lane 2: NBT-II cell lysate (Wistar rat bladder tumor cells) with ARHGAP1 polyclonal antibody (Cat # PAB30697).



### Immunohistochemistry (Formalin/PFA-fixed paraffin-embedded sections)

Immunohistochemical staining (Formalin-fixed paraffin-embedded sections) of human hippocampus (A, B), human stomach (C) with ARHGAP1 polyclonal antibody (Cat # PAB30697). A: Human hippocampus shows positivity in neuropil. B: Human hippocampus shows weak immunoreactivity in neuropil. C: Human stomach shows strong cytoplasmic positivity in glandular cells.



### Immunofluorescence

Immunofluorescent staining of U-251 MG (A), mouse dentate gyrus (B), mouse cingulate cortex (C), mouse thalamus (D), mouse motor trigeminal nucleus (E) and mouse brain (F) with ARHGAP1 polyclonal antibody (Cat # PAB30697) (Green). A: U-251 MG shows positivity in vesicles. B: Mouse dentate gyrus shows immunoreactivity in polymorph layer. C: Mouse cingulate cortex shows cytoplasmic immunoreactivity in neurons. D: Mouse thalamus shows positivity in neurons of the anterodorsal thalamic nucleus. E: Mouse motor trigeminal nucleus shows positivity in neuronal cells bodies and processes. F: Mouse brain shows neuronal staining in lateral paragigantocellular nucleus.

## Specification

<b>Product Description</b>	Rabbit polyclonal antibody raised against partial recombinant human ARHGAP1.
<b>Immunogen</b>	Recombinant protein corresponding to human ARHGAP1.
<b>Sequence</b>	SEALNQLKLASIDEKNWPSDEMPDFPKSDDSKSSSPELVTHLKWDDPYDIARHQMEVAGDDK YGRKIIVFSACRMPPSHQLDHSKLLGYLKHTLDQYVESDYLLYLHHGLTSDNKPSLS
<b>Host</b>	Rabbit
<b>Reactivity</b>	Human, Mouse, Rat
<b>Form</b>	Liquid
<b>Purification</b>	Antigen affinity purification
<b>Isotype</b>	IgG
<b>Recommend Usage</b>	Immunofluorescence (1-4 ug/mL) Immunohistochemistry (Formalin/PFA-fixed paraffin-embedded sections) (1:50-1:200) Western Blot (1:100-1:250) The optimal working dilution should be determined by the end user.
<b>Storage Buffer</b>	In PBS, pH 7.2 (40% glycerol, 0.02% sodium azide).
<b>Storage Instruction</b>	Store at 4°C. For long term storage store at -20°C. Aliquot to avoid repeated freezing and thawing.
<b>Note</b>	This product contains sodium azide: a POISONOUS AND HAZARDOUS SUBSTANCE which should be handled by trained staff only.

## Applications

- Western Blot (Tissue lysate)

Western Blot analysis of human cerebral cortex tissue lysate with ARHGAP1 polyclonal antibody (Cat # PAB30697).

- Western Blot (Tissue lysate)

Western Blot analysis of mouse cerebral cortex tissue lysate with ARHGAP1 polyclonal antibody (Cat # PAB30697).

- Western Blot (Cell lysate)

Western Blot analysis of Lane 1: NIH-3T3 cell lysate (mouse embryonic fibroblast cells) and Lane 2: NBT-II cell lysate (Wistar rat bladder tumor cells) with ARHGAP1 polyclonal antibody (Cat # PAB30697).

- Immunohistochemistry (Formalin/PFA-fixed paraffin-embedded sections)

Immunohistochemical staining (Formalin-fixed paraffin-embedded sections) of human hippocampus (A, B), human stomach (C) with ARHGAP1 polyclonal antibody (Cat # PAB30697). A: Human hippocampus shows positivity in neuropil. B: Human hippocampus shows weak immunoreactivity in neuropil. C: Human stomach shows strong cytoplasmic positivity in glandular cells.

- Immunofluorescence

Immunofluorescent staining of U-251 MG (A), mouse dentate gyrus (B), mouse cingulate cortex (C), mouse thalamus (D), mouse motor trigeminal nucleus (E) and mouse brain (F) with ARHGAP1 polyclonal antibody (Cat # PAB30697) (Green). A: U-251 MG shows positivity in vesicles. B: Mouse dentate gyrus shows immunoreactivity in polymorph layer. C: Mouse cingulate cortex shows cytoplasmic immunoreactivity in neurons. D: Mouse thalamus shows positivity in neurons of the anterodorsal thalamic nucleus. E: Mouse motor trigeminal nucleus shows positivity in neuronal cells bodies and processes. F: Mouse brain shows neuronal staining in lateral paragigantocellular nucleus.

## Gene Info — ARHGAP1

Entrez GeneID	<a href="#">392</a>
Protein Accession#	<a href="#">Q07960</a>
Gene Name	ARHGAP1
Gene Alias	CDC42GAP, RHOGAP, RHOGAP1, p50rhoGAP
Gene Description	Rho GTPase activating protein 1
Omim ID	<a href="#">602732</a>
Gene Ontology	<a href="#">Hyperlink</a>
Other Designations	CDC42 GTPase-activating protein

## Disease

- [Angina Pectoris](#)
- [Coronary Vasospasm](#)
- [Fractures](#)
- [Genetic Predisposition to Disease](#)