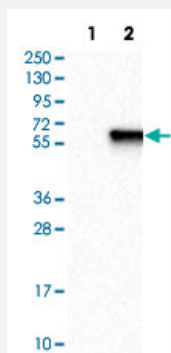


ZIC1 polyclonal antibody

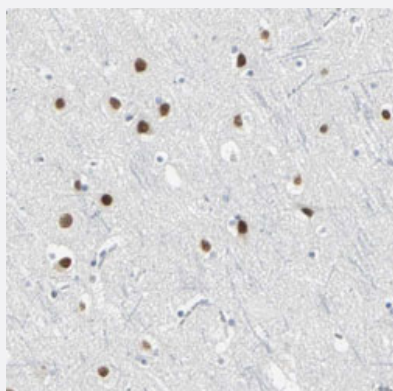
Catalog # PAB30667 Size 100 uL

Applications



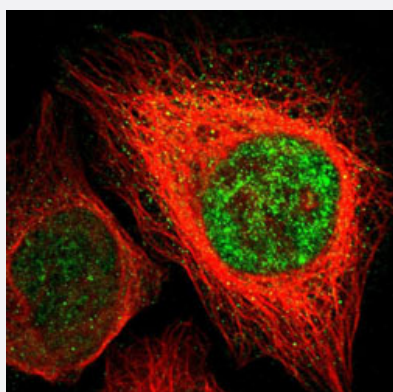
Western Blot (Transfected lysate)

Western Blot analysis of Lane 1: negative control (vector only transfected HEK293T cell lysate) and Lane 2: over-expression lysate (co-expressed with a C-terminal myc-DDK tag in mammalian HEK293T cells) with ZIC1 polyclonal antibody (Cat # PAB30667).



Immunohistochemistry (Formalin/PFA-fixed paraffin-embedded sections)

Immunohistochemical staining (Formalin-fixed paraffin-embedded sections) of human cerebral cortex with ZIC1 polyclonal antibody (Cat # PAB30667) shows strong nuclear positivity in neuronal and glial cells.



Immunofluorescence

Immunofluorescent staining of U-2 OS with ZIC1 polyclonal antibody (Cat # PAB30667) (Green) shows positivity in nucleus but excluded from the nucleoli.

Specification

Product Description	Rabbit polyclonal antibody raised against partial recombinant human ZIC1.
Immunogen	Recombinant protein corresponding to human ZIC1.
Sequence	LGINPFADGMGAFKLNPSSELASAGQTAFTSQAPGYAAAAALGHHHPGHVGSYSSAAFNSTR DFLFRNRGFGDAAAAASAQHSLFAASAGGFGGPHGHTDAAGHLLFPLHEQA
Host	Rabbit
Reactivity	Human
Form	Liquid
Purification	Antigen affinity purification
Isotype	IgG
Recommend Usage	Immunofluorescence (1-4 ug/mL) Immunohistochemistry (Formalin/PFA-fixed paraffin-embedded sections) (1:50-1:200) Western Blot (1:100-1:250) The optimal working dilution should be determined by the end user.
Storage Buffer	In PBS, pH 7.2 (40% glycerol, 0.02% sodium azide).
Storage Instruction	Store at 4°C. For long term storage store at -20°C. Aliquot to avoid repeated freezing and thawing.
Note	This product contains sodium azide: a POISONOUS AND HAZARDOUS SUBSTANCE which should be handled by trained staff only.

Applications

- Western Blot (Transfected lysate)

Western Blot analysis of Lane 1: negative control (vector only transfected HEK293T cell lysate) and Lane 2: over-expression lysate (co-expressed with a C-terminal myc-DDK tag in mammalian HEK293T cells) with ZIC1 polyclonal antibody (Cat # PAB30667).

- Immunohistochemistry (Formalin/PFA-fixed paraffin-embedded sections)

Immunohistochemical staining (Formalin-fixed paraffin-embedded sections) of human cerebral cortex with ZIC1 polyclonal antibody (Cat # PAB30667) shows strong nuclear positivity in neuronal and glial cells.

- Immunofluorescence

Immunofluorescent staining of U-2 OS with ZIC1 polyclonal antibody (Cat # PAB30667) (Green) shows positivity in nucleus but excluded from the nucleoli.

Gene Info — ZIC1

Entrez GeneID [7545](#)**Protein Accession#** [Q15915](#)**Gene Name** ZIC1**Gene Alias** ZIC, ZNF201**Gene Description** Zic family member 1 (odd-paired homolog, Drosophila)**Omim ID** [600470](#)**Gene Ontology** [Hyperlink](#)

Gene Summary This gene encodes a member of the ZIC family of C2H2-type zinc finger proteins. Members of this family are important during development. Aberrant expression of this gene is seen in medulloblastoma, a childhood brain tumor. This gene is closely linked to the gene encoding zinc finger protein of the cerebellum 4, a related family member on chromosome 3. This gene encodes a transcription factor that can bind and transactivate the apolipoprotein E gene. [provided by RefSeq]

Other Designations Zic family member 1 (odd-paired Drosophila homolog)|Zinc finger protein of the cerebellum 1|zinc finger protein of the cerebellum 1

Disease

- [Genetic Predisposition to Disease](#)
- [Neural Tube Defects](#)