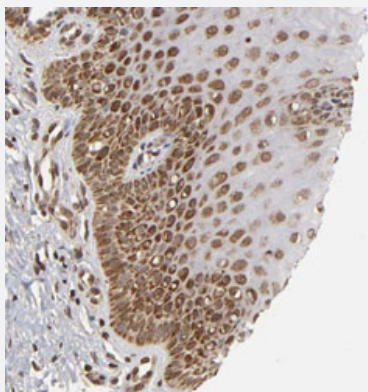


MLLT6 polyclonal antibody

Catalog # PAB30665

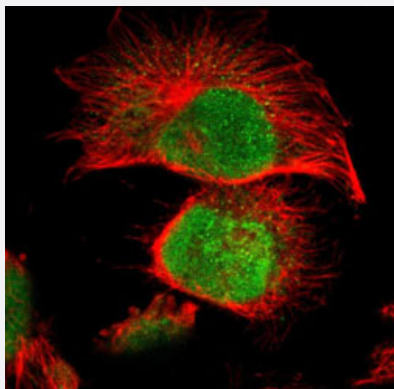
Size 100 uL

Applications



Immunohistochemistry (Formalin/PFA-fixed paraffin-embedded sections)

Immunohistochemical staining (Formalin-fixed paraffin-embedded sections) of human uterine cervix with MLLT6 polyclonal antibody (Cat # PAB30665) shows cytoplasmic and nuclear positivity in squamous epithelial cells.



Immunofluorescence

Immunofluorescent staining of U-251 MG with MLLT6 polyclonal antibody (Cat # PAB30665) (Green) shows positivity in nucleus.

Specification

Product Description

Rabbit polyclonal antibody raised against partial recombinant human MLLT6.

Immunogen

Recombinant protein corresponding to human MLLT6.

Sequence

PSAPPSPSAPEPPKADLFEQKVVFSGFGPIMRFSTTTSSSGRARAPSPGDYKSPHVTGSGASAG
THKRMPLSATPVPADETPETGLKEKKHKASKRSRHGPGRPKGSRNKEGTGGPAAPSLPSAQL
AGFTATAASPFSGGSLVSS

Host

Rabbit

Reactivity	Human
Form	Liquid
Purification	Antigen affinity purification
Isotype	IgG
Recommend Usage	Immunofluorescence (1-4 ug/mL) Immunohistochemistry (Formalin/PFA-fixed paraffin-embedded sections) (1:50-1:200) The optimal working dilution should be determined by the end user.
Storage Buffer	In PBS, pH 7.2 (40% glycerol, 0.02% sodium azide).
Storage Instruction	Store at 4°C. For long term storage store at -20°C. Aliquot to avoid repeated freezing and thawing.
Note	This product contains sodium azide: a POISONOUS AND HAZARDOUS SUBSTANCE which should be handled by trained staff only.

Applications

- Immunohistochemistry (Formalin/PFA-fixed paraffin-embedded sections)

Immunohistochemical staining (Formalin-fixed paraffin-embedded sections) of human uterine cervix with MLLT6 polyclonal antibody (Cat # PAB30665) shows cytoplasmic and nuclear positivity in squamous epithelial cells.

- Immunofluorescence

Immunofluorescent staining of U-251 MG with MLLT6 polyclonal antibody (Cat # PAB30665) (Green) shows positivity in nucleus.

Gene Info — MLLT6

Entrez GeneID	4302
Protein Accession#	P55198
Gene Name	MLLT6
Gene Alias	AF17, FLJ23480
Gene Description	myeloid/lymphoid or mixed-lineage leukemia (trithorax homolog, Drosophila); translocated to, 6
Omim ID	600328
Gene Ontology	Hyperlink
Gene Summary	Drosophila); translocated to

Other Designations

Myeloid/lymphoid or mixed-lineage leukemia, translocated to, 6|myeloid/lymphoid or mixed-lineage leukemia (trithorax homolog); translocated to, 6|trithorax homolog
