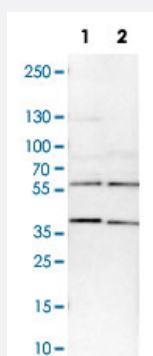


# SMARCE1 polyclonal antibody

Catalog # PAB30656

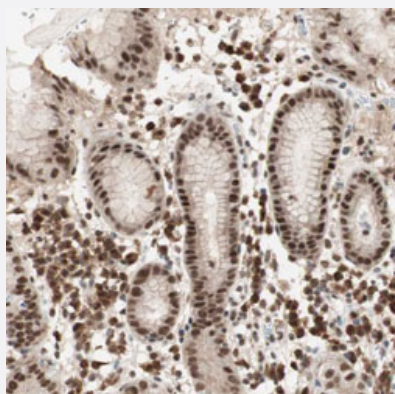
Size 100 uL

## Applications



### Western Blot (Cell lysate)

Western Blot analysis of Lane 1: NIH-3T3 cell lysate (mouse embryonic fibroblast cells) and Lane 2: NBT-II cell lysate (Wistar rat bladder tumor cells) with SMARCE1 polyclonal antibody (Cat # PAB30656).



### Immunohistochemistry (Formalin/PFA-fixed paraffin-embedded sections)

Immunohistochemical staining (Formalin-fixed paraffin-embedded sections) of human stomach with SMARCE1 polyclonal antibody (Cat # PAB30656) shows strong nuclear positivity in glandular cells.



### Immunofluorescence

Immunofluorescent staining of U-2 OS with SMARCE1 polyclonal antibody (Cat # PAB30656) (Green) shows positivity in nucleus but excluded from the nucleoli.

## Specification

<b>Product Description</b>	Rabbit polyclonal antibody raised against partial recombinant human SMARCE1.
<b>Immunogen</b>	Recombinant protein corresponding to human SMARCE1.
<b>Sequence</b>	EEREKEAAEQAERSQSSIVPEEEQAANKGEEKKDDENIPMETEETHLEETTESQQNGEEGTSTP EDKESGQEGVDSMAEEGTSDSNTGSESNSATVEEPPTDPIPEDEK
<b>Host</b>	Rabbit
<b>Reactivity</b>	Human, Mouse, Rat
<b>Form</b>	Liquid
<b>Purification</b>	Antigen affinity purification
<b>Isotype</b>	IgG
<b>Recommend Usage</b>	Immunofluorescence (1-4 ug/mL) Immunohistochemistry (Formalin/PFA-fixed paraffin-embedded sections) (1:200-1:500) Western Blot (1:100-1:250) The optimal working dilution should be determined by the end user.
<b>Storage Buffer</b>	In PBS, pH 7.2 (40% glycerol, 0.02% sodium azide).
<b>Storage Instruction</b>	Store at 4°C. For long term storage store at -20°C. Aliquot to avoid repeated freezing and thawing.
<b>Note</b>	This product contains sodium azide: a POISONOUS AND HAZARDOUS SUBSTANCE which should be handled by trained staff only.

## Applications

- Western Blot (Cell lysate)

Western Blot analysis of Lane 1: NIH-3T3 cell lysate (mouse embryonic fibroblast cells) and Lane 2: NBT-II cell lysate (Wistar rat bladder tumor cells) with SMARCE1 polyclonal antibody (Cat # PAB30656).

- Immunohistochemistry (Formalin/PFA-fixed paraffin-embedded sections)

Immunohistochemical staining (Formalin-fixed paraffin-embedded sections) of human stomach with SMARCE1 polyclonal antibody (Cat # PAB30656) shows strong nuclear positivity in glandular cells.

- Immunofluorescence

Immunofluorescent staining of U-2 OS with SMARCE1 polyclonal antibody (Cat # PAB30656) (Green) shows positivity in nucleus but excluded from the nucleoli.

## Gene Info — SMARCE1

Entrez GeneID	<a href="#">6605</a>
Protein Accession#	<a href="#">Q969G3</a>
Gene Name	SMARCE1
Gene Alias	BAF57
Gene Description	SWI/SNF related, matrix associated, actin dependent regulator of chromatin, subfamily e, member 1
Omim ID	<a href="#">603111</a>
Gene Ontology	<a href="#">Hyperlink</a>
Gene Summary	<p>The protein encoded by this gene is part of the large ATP-dependent chromatin remodeling complex SWI/SNF, which is required for transcriptional activation of genes normally repressed by chromatin. The encoded protein, either alone or when in the SWI/SNF complex, can bind to 4-way junction DNA, which is thought to mimic the topology of DNA as it enters or exits the nucleosome. The protein contains a DNA-binding HMG domain, but disruption of this domain does not abolish the DNA-binding or nucleosome-displacement activities of the SWI/SNF complex. Unlike most of the SWI/SNF complex proteins, this protein has no yeast counterpart. [provided by RefSeq]</p>
Other Designations	SWI/SNF-related matrix-associated actin-dependent regulator of chromatin e1 mammalian chromatin remodeling complex BRG1-associated factor 57

## Disease

- [Asthma](#)