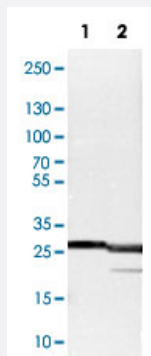


# BCAP31 polyclonal antibody

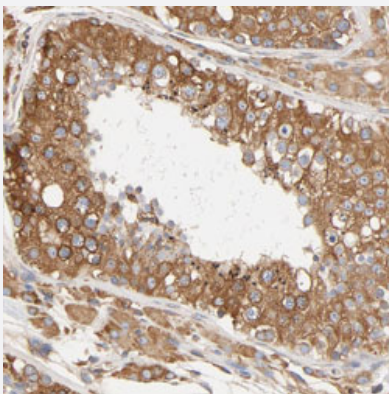
Catalog # PAB30653      Size 100 uL

## Applications



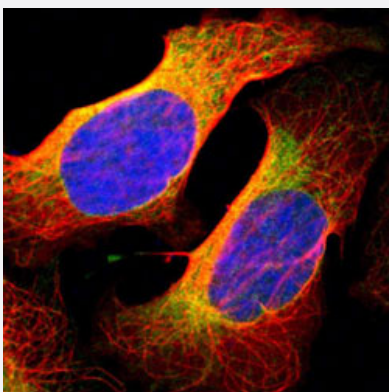
### Western Blot (Cell lysate)

Western Blot analysis of Lane 1: NIH-3T3 cell lysate (mouse embryonic fibroblast cells) and Lane 2: NBT-II cell lysate (Wistar rat bladder tumor cells) with BCAP31 polyclonal antibody (Cat # PAB30653).



### Immunohistochemistry (Formalin/PFA-fixed paraffin-embedded sections)

Immunohistochemical staining (Formalin-fixed paraffin-embedded sections) of human testis with BCAP31 polyclonal antibody (Cat # PAB30653) shows strong cytoplasmic positivity in cells in seminiferous ducts.



### Immunofluorescence

Immunofluorescent staining of U-2 OS with BCAP31 polyclonal antibody (Cat # PAB30653) (Green) shows positivity in endoplasmic reticulum.

## Specification

<b>Product Description</b>	Rabbit polyclonal antibody raised against partial recombinant human BCAP31.
<b>Immunogen</b>	Recombinant protein corresponding to human BCAP31.
<b>Sequence</b>	ESASEAAKKYMEENDQLKKGAAVDGGKLDVGNAEVKLEEEENRSLKADLQKLKDELASTKQKLE KAENQVLAMRKQSEGLTKEYDRLLLEEHAQLQAQAVDGP
<b>Host</b>	Rabbit
<b>Reactivity</b>	Human, Mouse, Rat
<b>Form</b>	Liquid
<b>Purification</b>	Antigen affinity purification
<b>Isotype</b>	IgG
<b>Recommend Usage</b>	Immunofluorescence (1-4 ug/mL) Immunohistochemistry (Formalin/PFA-fixed paraffin-embedded sections) (1:2500-1:5000) Western Blot (1:500-1:1000) The optimal working dilution should be determined by the end user.
<b>Storage Buffer</b>	In PBS, pH 7.2 (40% glycerol, 0.02% sodium azide).
<b>Storage Instruction</b>	Store at 4°C. For long term storage store at -20°C. Aliquot to avoid repeated freezing and thawing.
<b>Note</b>	This product contains sodium azide: a POISONOUS AND HAZARDOUS SUBSTANCE which should be handled by trained staff only.

## Applications

- Western Blot (Cell lysate)

Western Blot analysis of Lane 1: NIH-3T3 cell lysate (mouse embryonic fibroblast cells) and Lane 2: NBT-II cell lysate (Wistar rat bladder tumor cells) with BCAP31 polyclonal antibody (Cat # PAB30653).

- Immunohistochemistry (Formalin/PFA-fixed paraffin-embedded sections)

Immunohistochemical staining (Formalin-fixed paraffin-embedded sections) of human testis with BCAP31 polyclonal antibody (Cat # PAB30653) shows strong cytoplasmic positivity in cells in seminiferous ducts.

- Immunofluorescence

Immunofluorescent staining of U-2 OS with BCAP31 polyclonal antibody (Cat # PAB30653) (Green) shows positivity in endoplasmic reticulum.

## Gene Info — BCAP31

**Entrez GeneID** [10134](#)**Protein Accession#** [P51572](#)**Gene Name** BCAP31**Gene Alias** 6C6-AG, BAP31, CDM, DXS1357E**Gene Description** B-cell receptor-associated protein 31**Omim ID** [300398](#)**Gene Ontology** [Hyperlink](#)

**Gene Summary** This gene encodes a member of the B-cell receptor associated protein 31 superfamily. The encoded protein is a multi-pass transmembrane protein of the endoplasmic reticulum that is involved in the anterograde transport of membrane proteins from the endoplasmic reticulum to the Golgi and in the caspase 8-mediated apoptosis. Microdeletions in this gene are associated with the contiguous ABCD1/DXS1375E deletion syndrome. Two pseudogenes have been identified on chromosome 16. Alternatively spliced transcript variants encoding distinct isoforms have been described although the biological validity of some of the variants has not been determined. [provided by RefSeq]

**Other Designations** 6C6 antigen|BCR-associated protein Bap31|OTTHUMP00000025977|OTTHUMP00000025978|p28 Bap31