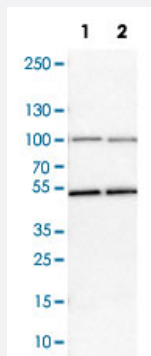


# MCM7 polyclonal antibody

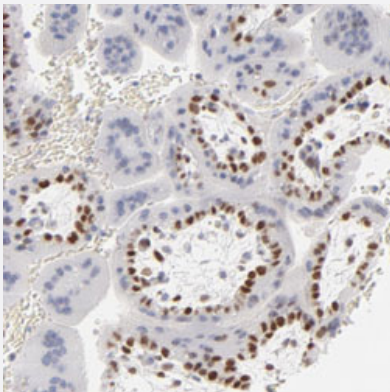
Catalog # PAB30650      Size 100 uL

## Applications



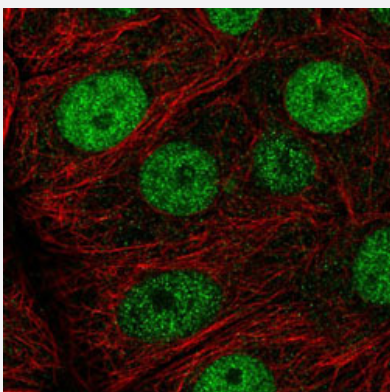
### Western Blot (Cell lysate)

Western Blot analysis of Lane 1: NIH-3T3 cell lysate (mouse embryonic fibroblast cells) and Lane 2: NBT-II cell lysate (Wistar rat bladder tumor cells) with MCM7 polyclonal antibody (Cat # PAB30650).



### Immunohistochemistry (Formalin/PFA-fixed paraffin-embedded sections)

Immunohistochemical staining (Formalin-fixed paraffin-embedded sections) of human placenta with MCM7 polyclonal antibody (Cat # PAB30650) shows strong nuclear positivity in trophoblastic cells.



### Immunofluorescence

Immunofluorescent staining of MCF7 cells with MCM7 polyclonal antibody (Cat # PAB30650) (Green) shows positivity in nucleus but excluded from the nucleoli.

## Specification

<b>Product Description</b>	Rabbit polyclonal antibody raised against partial recombinant human MCM7.
<b>Immunogen</b>	Recombinant protein corresponding to human MCM7.
<b>Sequence</b>	QSPTFMPLIMCPSQECQTNRS GGRLYLQTRGSRFIKFQEMKMQEHSDQVPVGNIPRSITVLVEGE NTRIAQPGDHVSVTGIFLPILRTGFRQVVQGLLSETYLEAHRIVKMNKSEDD ESGAGE
<b>Host</b>	Rabbit
<b>Reactivity</b>	Human, Mouse, Rat
<b>Form</b>	Liquid
<b>Purification</b>	Antigen affinity purification
<b>Isotype</b>	IgG
<b>Recommend Usage</b>	Immunofluorescence (1-4 ug/mL) Immunohistochemistry (Formalin/PFA-fixed paraffin-embedded sections) (1:200-1:500) Western Blot (1:100-1:250) The optimal working dilution should be determined by the end user.
<b>Storage Buffer</b>	In PBS, pH 7.2 (40% glycerol, 0.02% sodium azide).
<b>Storage Instruction</b>	Store at 4°C. For long term storage store at -20°C. Aliquot to avoid repeated freezing and thawing.
<b>Note</b>	This product contains sodium azide: a POISONOUS AND HAZARDOUS SUBSTANCE which should be handled by trained staff only.

## Applications

- Western Blot (Cell lysate)

Western Blot analysis of Lane 1: NIH-3T3 cell lysate (mouse embryonic fibroblast cells) and Lane 2: NBT-II cell lysate (Wistar rat bladder tumor cells) with MCM7 polyclonal antibody (Cat # PAB30650).

- Immunohistochemistry (Formalin/PFA-fixed paraffin-embedded sections)

Immunohistochemical staining (Formalin-fixed paraffin-embedded sections) of human placenta with MCM7 polyclonal antibody (Cat # PAB30650) shows strong nuclear positivity in trophoblastic cells.

- Immunofluorescence

Immunofluorescent staining of MCF7 cells with MCM7 polyclonal antibody (Cat # PAB30650) (Green) shows positivity in nucleus but excluded from the nucleoli.

## Gene Info — MCM7

Entrez GeneID	<a href="#">4176</a>
Protein Accession#	<a href="#">P33993</a>
Gene Name	MCM7
Gene Alias	CDABP0042, CDC47, MCM2, P1.1-MCM3, P1CDC47, P85MCM, PNAS-146
Gene Description	minichromosome maintenance complex component 7
Omim ID	<a href="#">600592</a>
Gene Ontology	<a href="#">Hyperlink</a>
Gene Summary	<p>The protein encoded by this gene is one of the highly conserved mini-chromosome maintenance proteins (MCM) that are essential for the initiation of eukaryotic genome replication. The hexameric protein complex formed by the MCM proteins is a key component of the pre-replication complex (pre_RC) and may be involved in the formation of replication forks and in the recruitment of other DNA replication related proteins. The MCM complex consisting of this protein and MCM2, 4 and 6 proteins possesses DNA helicase activity, and may act as a DNA unwinding enzyme. Cyclin D1-dependent kinase, CDK4, is found to associate with this protein, and may regulate the binding of this protein with the tumorsuppressor protein RB1/RB. Alternatively spliced transcript variants encoding distinct isoforms have been reported. [provided by RefSeq]</p>
Other Designations	DNA replication licensing factor MCM7 MCM7 minichromosome maintenance deficient 7 homolog of S. cerevisiae Cdc47 minichromosome maintenance deficient 7

## Pathway

- [Cell cycle](#)
- [DNA replication](#)

## Disease

- [Autistic Disorder](#)
- [Genetic Predisposition to Disease](#)