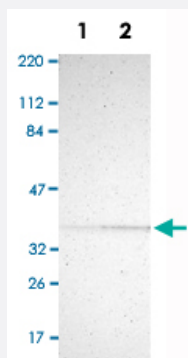


PDLIM2 polyclonal antibody

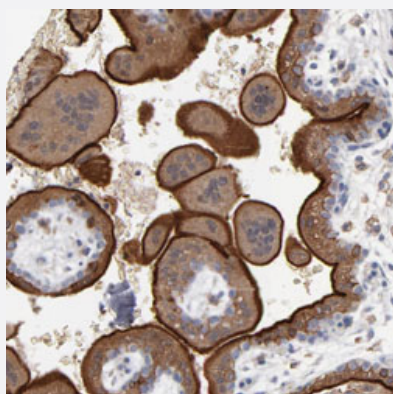
Catalog # PAB30645 Size 100 uL

Applications



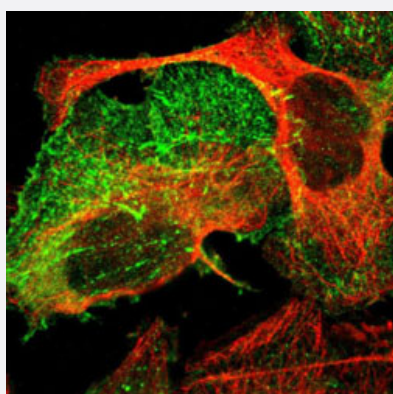
Western Blot (Cell lysate)

Western Blot analysis of Lane 1: RT-4 and Lane 2: U-251MG sp cell lysates with PDLIM2 polyclonal antibody (Cat # PAB30645).



Immunohistochemistry (Formalin/PFA-fixed paraffin-embedded sections)

Immunohistochemical staining (Formalin-fixed paraffin-embedded sections) of human placenta with PDLIM2 polyclonal antibody (Cat # PAB30645) shows strong membranous and cytoplasmic positivity in trophoblastic cells.



Immunofluorescence

Immunofluorescent staining of U-2 OS with PDLIM2 polyclonal antibody (Cat # PAB30645) (Green) shows positivity in actin filaments and focal adhesion sites.

Specification

Product Description	Rabbit polyclonal antibody raised against partial recombinant human PDLIM2.
Immunogen	Recombinant protein corresponding to human PDLIM2.
Sequence	SPGHTNGDSSLEVLATRFQGSVRTYTESQSSLRSSYSPTSLSPRAGSPFSPPPSSSSLTGEAAI SRSFQSLACSPGLPAADRLSYSGRPGSRQAGLGRAGDSAVLVLPSPGPRSSRPSMDEG
Host	Rabbit
Reactivity	Human
Form	Liquid
Purification	Antigen affinity purification
Isotype	IgG
Recommend Usage	Immunofluorescence (1-4 ug/mL) Immunohistochemistry (Formalin/PFA-fixed paraffin-embedded sections) (1:200-1:500) Western Blot (1:100-1:250) The optimal working dilution should be determined by the end user.
Storage Buffer	In PBS, pH 7.2 (40% glycerol, 0.02% sodium azide).
Storage Instruction	Store at 4°C. For long term storage store at -20°C. Aliquot to avoid repeated freezing and thawing.
Note	This product contains sodium azide: a POISONOUS AND HAZARDOUS SUBSTANCE which should be handled by trained staff only.

Applications

- Western Blot (Cell lysate)

Western Blot analysis of Lane 1: RT-4 and Lane 2: U-251MG sp cell lysates with PDLIM2 polyclonal antibody (Cat # PAB30645).

- Immunohistochemistry (Formalin/PFA-fixed paraffin-embedded sections)

Immunohistochemical staining (Formalin-fixed paraffin-embedded sections) of human placenta with PDLIM2 polyclonal antibody (Cat # PAB30645) shows strong membranous and cytoplasmic positivity in trophoblastic cells.

- Immunofluorescence

Immunofluorescent staining of U-2 OS with PDLIM2 polyclonal antibody (Cat # PAB30645) (Green) shows positivity in actin filaments and focal adhesion sites.

Gene Info — PDLIM2

Entrez GeneID	64236
Protein Accession#	Q96JY6
Gene Name	PDLIM2
Gene Alias	FLJ34715, MYSTIQUE, SLIM
Gene Description	PDZ and LIM domain 2 (mystique)
Omim ID	609722
Gene Ontology	Hyperlink
Other Designations	PDZ and LIM domain 2