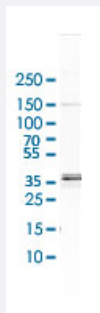


RRAGA polyclonal antibody

Catalog # PAB30640

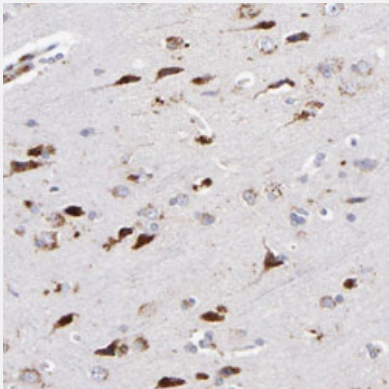
Size 100 uL

Applications



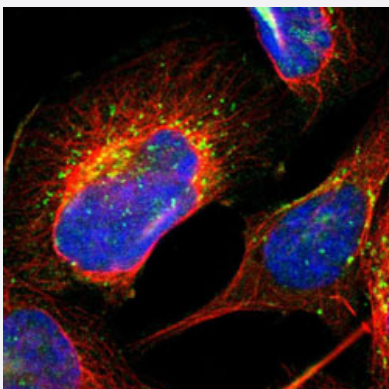
Western Blot (Cell lysate)

Western Blot (Cell lysate) analysis of EFO-21 cell lysate.



Immunohistochemistry (Formalin/PFA-fixed paraffin-embedded sections)

Immunohistochemical staining (Formalin-fixed paraffin-embedded sections) of human cerebral cortex with RRAGA polyclonal antibody (Cat # PAB30640) shows strong cytoplasmic positivity in neuronal cells.



Immunofluorescence

Immunofluorescent staining of U-2 OS with RRAGA polyclonal antibody (Cat # PAB30640) (Green) shows positivity in the Golgi apparatus and vesicles.

Specification

Product Description	Rabbit polyclonal antibody raised against partial recombinant human RRAGA.
Immunogen	Recombinant protein corresponding to human RRAGA.
Sequence	FDVEHSHVRFLGNLVLNLWDCGGQDTFMENYFTSQRDNIFRNVEVLIYFDVESRELEKDMHYYQ SCLEAILQNSPDAKIFCLVHKMDLVQEDQRDLIFKEREEDLRRLSRPLECSCF
Host	Rabbit
Reactivity	Human
Form	Liquid
Purification	Antigen affinity purification
Isotype	IgG
Recommend Usage	Immunofluorescence (1-4 ug/mL) Immunohistochemistry (Formalin/PFA-fixed paraffin-embedded sections) (1:50-1:200) Western Blot (1:100-1:250) The optimal working dilution should be determined by the end user.
Storage Buffer	In PBS, pH 7.2 (40% glycerol, 0.02% sodium azide).
Storage Instruction	Store at 4°C. For long term storage store at -20°C. Aliquot to avoid repeated freezing and thawing.
Note	This product contains sodium azide: a POISONOUS AND HAZARDOUS SUBSTANCE which should be handled by trained staff only.

Applications

- Western Blot (Cell lysate)

Western Blot (Cell lysate) analysis of EFO-21 cell lysate.

- Immunohistochemistry (Formalin/PFA-fixed paraffin-embedded sections)

Immunohistochemical staining (Formalin-fixed paraffin-embedded sections) of human cerebral cortex with RRAGA polyclonal antibody (Cat # PAB30640) shows strong cytoplasmic positivity in neuronal cells.

- Immunofluorescence

Immunofluorescent staining of U-2 OS with RRAGA polyclonal antibody (Cat # PAB30640) (Green) shows positivity in the Golgi apparatus and vesicles.

Gene Info — RRAGA

Entrez GeneID	10670
Protein Accession#	Q7L523
Gene Name	RRAGA
Gene Alias	FIP-1, FIP1, RAGA
Gene Description	Ras-related GTP binding A
Gene Ontology	Hyperlink
Other Designations	Ras-related GTP-binding protein adenovirus E3-14.7K interacting protein 1