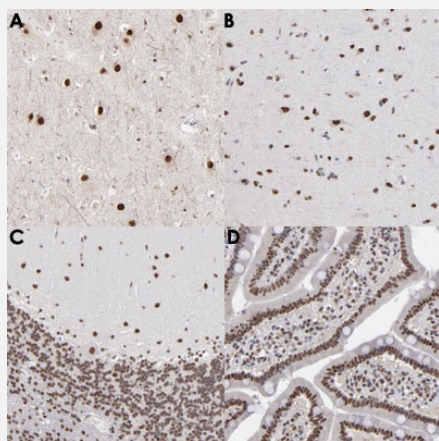


ZNF3 polyclonal antibody

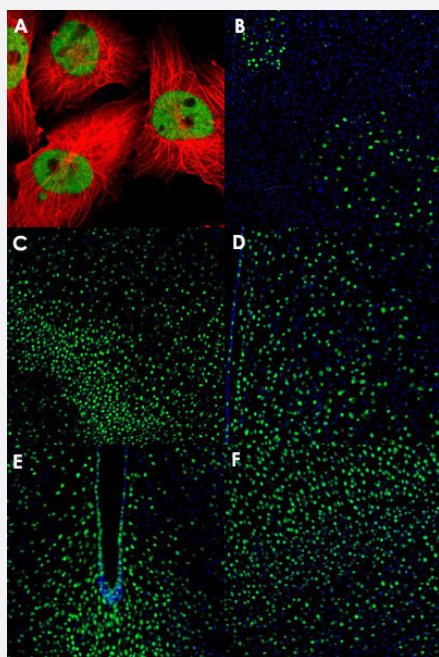
Catalog # PAB30639 Size 100 uL

Applications



Immunohistochemistry (Formalin/PFA-fixed paraffin-embedded sections)

Immunohistochemical staining (Formalin-fixed paraffin-embedded sections) of human cerebral cortex (A, B), human cerebellum (C) and human duodenum (D) with ZNF3 polyclonal antibody (Cat # PAB30639). A: Human cerebral cortex shows nuclear positivity in neuronal cells. B: Human cerebral cortex shows strong nuclear immunoreactivity in neurons. C: Human cerebellum shows nuclear positivity in Purkinje cells, as well as in the molecular and granular cell layers. D: Human duodenum shows strong nuclear positivity in glandular cells.



Immunofluorescence

Immunofluorescent staining of U-251 MG (A), mouse midbrain (B), mouse piriform cortex (C), mouse hypothalamus (D, E) and mouse visual cortex (F) with ZNF3 polyclonal antibody (Cat # PAB30639) (Green). A: U-251 MG shows positivity in nucleus but excluded from the nucleoli. B: Mouse midbrain shows nuclear staining in neurons of the oculomotor and red nuclei. C: Mouse piriform cortex shows nuclear staining in the neurons of layer 2. D: Mouse hypothalamus shows nuclear positivity in the neurons of medial preoptic area. E: Mouse hypothalamus shows nuclear immunoreactivity in the neurons in the arcuate nucleus. F: Mouse visual cortex shows nuclear positivity in neurons.

Specification

Product Description

Rabbit polyclonal antibody raised against partial recombinant human ZNF3.

Immunogen	Recombinant protein corresponding to human ZNF3.
Sequence	SALPSKVPAFSDKDSLGDMLAAALLKAKSQELVTFEDVAVYFIRKEWKRLEPAQRDLYRDVML ENYGNVFSLDRETRTENDQEISEDTRSHGVLLGRFQKDISQGLKFKEAYEREVSLKRPLGNSPGE RLNRK
Host	Rabbit
Reactivity	Human, Mouse
Form	Liquid
Purification	Antigen affinity purification
Isotype	IgG
Recommend Usage	Immunofluorescence (1-4 ug/mL) Immunohistochemistry (Formalin/PFA-fixed paraffin-embedded sections) (1:50-1:200) The optimal working dilution should be determined by the end user.
Storage Buffer	In PBS, pH 7.2 (40% glycerol, 0.02% sodium azide).
Storage Instruction	Store at 4°C. For long term storage store at -20°C. Aliquot to avoid repeated freezing and thawing.
Note	This product contains sodium azide: a POISONOUS AND HAZARDOUS SUBSTANCE which should be handled by trained staff only.

Applications

- Immunohistochemistry (Formalin/PFA-fixed paraffin-embedded sections)

Immunohistochemical staining (Formalin-fixed paraffin-embedded sections) of human cerebral cortex (A, B), human cerebellum (C) and human duodenum (D) with ZNF3 polyclonal antibody (Cat # PAB30639). A: Human cerebral cortex shows nuclear positivity in neuronal cells. B: Human cerebral cortex shows strong nuclear immunoreactivity in neurons. C: Human cerebellum shows nuclear positivity in Purkinje cells, as well as in the molecular and granular cell layers. D: Human duodenum shows strong nuclear positivity in glandular cells.

- Immunofluorescence

Immunofluorescent staining of U-251 MG (A), mouse midbrain (B), mouse piriform cortex (C), mouse hypothalamus (D, E) and mouse visual cortex (F) with ZNF3 polyclonal antibody (Cat # PAB30639) (Green). A: U-251 MG shows positivity in nucleus but excluded from the nucleoli. B: Mouse midbrain shows nuclear staining in neurons of the oculomotor and red nuclei. C: Mouse piriform cortex shows nuclear staining in the neurons of layer 2. D: Mouse hypothalamus shows nuclear positivity in the neurons of medial preoptic area. E: Mouse hypothalamus shows nuclear immunoreactivity in the neurons in the arcuate nucleus. F: Mouse visual cortex shows nuclear positivity in neurons.

Gene Info — ZNF3

Entrez GeneID	7551
Protein Accession#	P17036
Gene Name	ZNF3
Gene Alias	A8-51, FLJ20216, HF.12, KOX25, PP838, Zfp113
Gene Description	zinc finger protein 3
Omim ID	194510
Gene Ontology	Hyperlink
Other Designations	C2-H2 type zinc finger protein