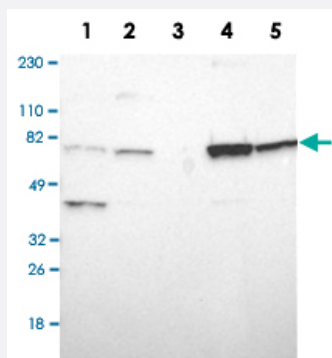


ASMTL polyclonal antibody

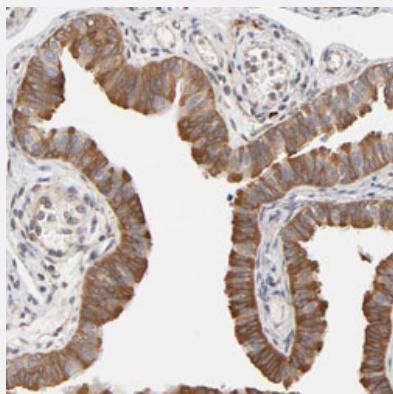
Catalog # PAB30637 Size 100 uL

Applications



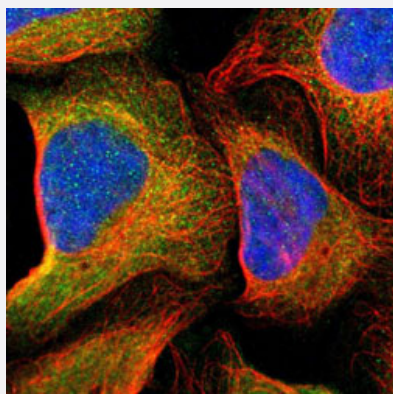
Western Blot

Western Blot analysis of Lane 1: RT-4, Lane 2: U-251MG sp, Lane 3: human plasma (IgG/HSA depleted), Lane 4: human liver and Lane 5: human tonsil lysates with ASMTL polyclonal antibody (Cat # PAB30637).



Immunohistochemistry (Formalin/PFA-fixed paraffin-embedded sections)

Immunohistochemical staining (Formalin-fixed paraffin-embedded sections) of human fallopian tube with ASMTL polyclonal antibody (Cat # PAB30637) shows cytoplasmic positivity in glandular cells.



Immunofluorescence

Immunofluorescent staining of U-2 OS with ASMTL polyclonal antibody (Cat # PAB30637) (Green) shows positivity in cytoplasm.

Specification

Product Description	Rabbit polyclonal antibody raised against partial recombinant human ASMTL.
Immunogen	Recombinant protein corresponding to human ASMTL.
Sequence	LLWEYVHSGEPMKAGGYGIQALGGMLVESVHGDFLNVVGFLNHFCKQLVKLYPPRPEDLRR SVKHDSIPAADTFEDLSDVEGGGSEPTQRDAGSRDEKAEAGEAGQATAEAECHRTRETLPFP TRLLELIEGFMSK
Host	Rabbit
Reactivity	Human
Form	Liquid
Purification	Antigen affinity purification
Isotype	IgG
Recommend Usage	Immunofluorescence (1-4 ug/mL) Immunohistochemistry (Formalin/PFA-fixed paraffin-embedded sections) (1:500-1:1000) Western Blot (1:100-1:250) The optimal working dilution should be determined by the end user.
Storage Buffer	In PBS, pH 7.2 (40% glycerol, 0.02% sodium azide).
Storage Instruction	Store at 4°C. For long term storage store at -20°C. Aliquot to avoid repeated freezing and thawing.
Note	This product contains sodium azide: a POISONOUS AND HAZARDOUS SUBSTANCE which should be handled by trained staff only.

Applications

- Western Blot

Western Blot analysis of Lane 1: RT-4, Lane 2: U-251MG sp, Lane 3: human plasma (IgG/HSA depleted), Lane 4: human liver and Lane 5: human tonsil lysates with ASMTL polyclonal antibody (Cat # PAB30637).

- Immunohistochemistry (Formalin/PFA-fixed paraffin-embedded sections)

Immunohistochemical staining (Formalin-fixed paraffin-embedded sections) of human fallopian tube with ASMTL polyclonal antibody (Cat # PAB30637) shows cytoplasmic positivity in glandular cells.

- Immunofluorescence

Immunofluorescent staining of U-2 OS with ASMTL polyclonal antibody (Cat # PAB30637) (Green) shows positivity in cytoplasm.

Gene Info — ASMTL

Entrez GeneID	8623
Protein Accession#	O95671
Gene Name	ASMTL
Gene Alias	ASMTLX, ASMTLY, ASTM
Gene Description	acetylserotonin O-methyltransferase-like
Omim ID	300162 400011
Gene Ontology	Hyperlink
Other Designations	OTTHUMP00000022825 acetylserotonin N-methyltransferase-like