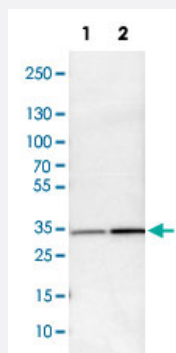


MAPRE1 polyclonal antibody

Catalog # PAB30634

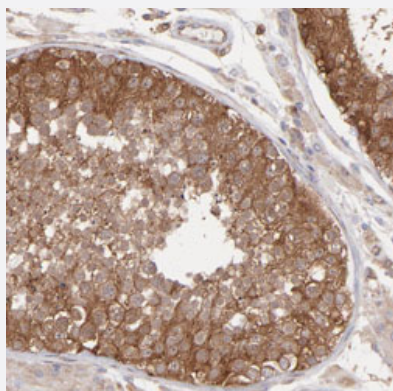
Size 100 uL

Applications



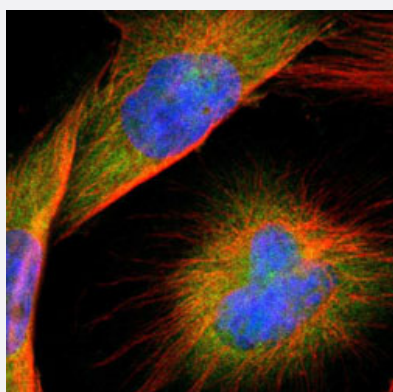
Western Blot (Cell lysate)

Western Blot analysis of Lane 1: NIH-3T3 cell lysate (mouse embryonic fibroblast cells) and Lane 2: NBT-II cell lysate (Wistar rat bladder tumor cells) with MAPRE1 polyclonal antibody (Cat # PAB30634).



Immunohistochemistry (Formalin/PFA-fixed paraffin-embedded sections)

Immunohistochemical staining (Formalin-fixed paraffin-embedded sections) of human testis with MAPRE1 polyclonal antibody (Cat # PAB30634) shows strong cytoplasmic positivity in cells of seminiferous ducts.



Immunofluorescence

Immunofluorescent staining of U-251 MG with MAPRE1 polyclonal antibody (Cat # PAB30634) (Green) shows positivity in cytoplasm and centrosome.

Specification

Product Description	Rabbit polyclonal antibody raised against partial recombinant human MAPRE1.
Immunogen	Recombinant protein corresponding to human MAPRE1.
Sequence	VAPSLVAPALNPKPKPLTSSSAAPQRPISRTQRTAAAPKAGPGVVRKNPGVGNNGDDEAAELMQQ VNVLKLTVEDLEKERDFYFGKLRNIELICQENEGENDPVLQRMDILYATDEGFVIPDE
Host	Rabbit
Reactivity	Human, Mouse, Rat
Form	Liquid
Purification	Antigen affinity purification
Isotype	IgG
Recommend Usage	Immunofluorescence (1-4 ug/mL) Immunohistochemistry (Formalin/PFA-fixed paraffin-embedded sections) (1:200-1:500) Western Blot (1:100-1:250) The optimal working dilution should be determined by the end user.
Storage Buffer	In PBS, pH 7.2 (40% glycerol, 0.02% sodium azide).
Storage Instruction	Store at 4°C. For long term storage store at -20°C. Aliquot to avoid repeated freezing and thawing.
Note	This product contains sodium azide: a POISONOUS AND HAZARDOUS SUBSTANCE which should be handled by trained staff only.

Applications

- Western Blot (Cell lysate)

Western Blot analysis of Lane 1: NIH-3T3 cell lysate (mouse embryonic fibroblast cells) and Lane 2: NBT-II cell lysate (Wistar rat bladder tumor cells) with MAPRE1 polyclonal antibody (Cat # PAB30634).

- Immunohistochemistry (Formalin/PFA-fixed paraffin-embedded sections)

Immunohistochemical staining (Formalin-fixed paraffin-embedded sections) of human testis with MAPRE1 polyclonal antibody (Cat # PAB30634) shows strong cytoplasmic positivity in cells of seminiferous ducts.

- Immunofluorescence

Immunofluorescent staining of U-251 MG with MAPRE1 polyclonal antibody (Cat # PAB30634) (Green) shows positivity in cytoplasm and centrosome.

Gene Info — MAPRE1

Entrez GeneID [22919](#)**Protein Accession#** [Q15691](#)**Gene Name** MAPRE1**Gene Alias** EB1, MGC117374, MGC129946**Gene Description** microtubule-associated protein, RP/EB family, member 1**Omim ID** [603108](#)**Gene Ontology** [Hyperlink](#)

Gene Summary

The protein encoded by this gene was first identified by its binding to the APC protein which is often mutated in familial and sporadic forms of colorectal cancer. This protein localizes to microtubules, especially the growing ends, in interphase cells. During mitosis, the protein is associated with the centrosomes and spindle microtubules. The protein also associates with components of the dynein complex and the intermediate chain of cytoplasmic dynein. Because of these associations, it is thought that this protein is involved in the regulation of microtubule structures and chromosome stability. This gene is a member of the RP/EB family. [provided by RefSeq]

Other Designations OTTHUMP00000030608|adenomatous polyposis coli-binding protein EB1