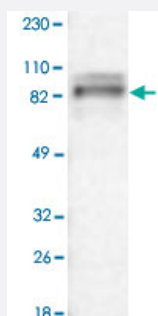


## ARHGEF6 polyclonal antibody

Catalog # PAB30632

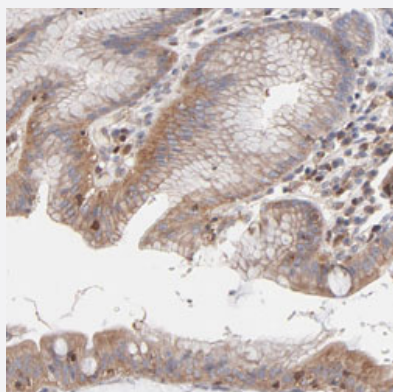
Size 100 uL

### Applications



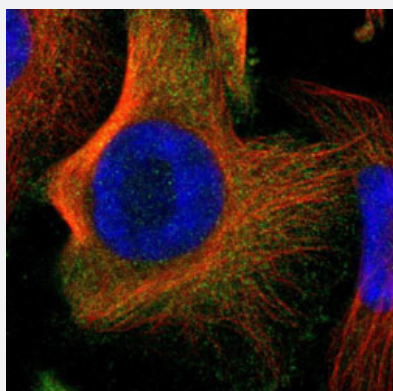
#### Western Blot (Cell lysate)

Western Blot analysis of RT-4 cell lysate with ARHGEF6 polyclonal antibody (Cat # PAB30632).



#### Immunohistochemistry (Formalin/PFA-fixed paraffin-embedded sections)

Immunohistochemical staining (Formalin-fixed paraffin-embedded sections) of human stomach with ARHGEF6 polyclonal antibody (Cat # PAB30632) shows cytoplasmic and membranous positivity in glandular cells.



#### Immunofluorescence

Immunofluorescent staining of U-251 MG with ARHGEF6 polyclonal antibody (Cat # PAB30632) (Green) shows positivity in cytoplasm.

### Specification

Product Description	Rabbit polyclonal antibody raised against partial recombinant human ARHGEF6.
Immunogen	Recombinant protein corresponding to human ARHGEF6.
Sequence	VQYGACEEKEERYLMLFSNVLMLSASPRMSGFIYQGKIPAGTVVTRLDEIEGNDCTFEITGNTVERI VVHCNNNQDFQEWLEQLNRLIRGPASCSSLSTSSSSCSAHS
Host	Rabbit
Reactivity	Human
Form	Liquid
Purification	Antigen affinity purification
Isotype	IgG
Recommend Usage	Immunofluorescence (1-4 ug/mL) Immunohistochemistry (Formalin/PFA-fixed paraffin-embedded sections) (1:50-1:200) Western Blot (1:100-1:250) The optimal working dilution should be determined by the end user.
Storage Buffer	In PBS, pH 7.2 (40% glycerol, 0.02% sodium azide).
Storage Instruction	Store at 4°C. For long term storage store at -20°C. Aliquot to avoid repeated freezing and thawing.
Note	This product contains sodium azide: a POISONOUS AND HAZARDOUS SUBSTANCE which should be handled by trained staff only.

## Applications

- Western Blot (Cell lysate)

Western Blot analysis of RT-4 cell lysate with ARHGEF6 polyclonal antibody (Cat # PAB30632).

- Immunohistochemistry (Formalin/PFA-fixed paraffin-embedded sections)

Immunohistochemical staining (Formalin-fixed paraffin-embedded sections) of human stomach with ARHGEF6 polyclonal antibody (Cat # PAB30632) shows cytoplasmic and membranous positivity in glandular cells.

- Immunofluorescence

Immunofluorescent staining of U-251 MG with ARHGEF6 polyclonal antibody (Cat # PAB30632) (Green) shows positivity in cytoplasm.

## Gene Info — ARHGEF6

Entrez GeneID	<a href="#">9459</a>
Protein Accession#	<a href="#">Q15052</a>
Gene Name	ARHGEF6
Gene Alias	COOL2, Cool-2, KIAA0006, MRX46, PIXA, alpha-PIX, alphaPIX
Gene Description	Rac/Cdc42 guanine nucleotide exchange factor (GEF) 6
Omim ID	<a href="#">300267</a> <a href="#">300436</a>
Gene Ontology	<a href="#">Hyperlink</a>
Gene Summary	Rho GTPases play a fundamental role in numerous cellular processes that are initiated by extracellular stimuli that work through G protein coupled receptors. The encoded protein belongs to a family of cytoplasmic proteins that activate the Ras-like family of Rho proteins by exchanging bound GDP for GTP. It may form a complex with G proteins and stimulate Rho-dependent signals. This protein is activated by PI3-kinase. Mutations in this gene can cause X-chromosomal non-specific mental retardation. [provided by RefSeq]
Other Designations	OTTHUMP00000062283 PAK-interacting exchange factor, alpha Rac/Cdc42 guanine exchange factor (GEF) 6 Rac/Cdc42 guanine nucleotide exchange factor 6 mental retardation, X-linked 46 rho guanine nucleotide exchange factor 6

## Pathway

- [Pancreatic cancer](#)
- [Regulation of actin cytoskeleton](#)

## Disease

- [Angina Pectoris](#)
- [Coronary Vasospasm](#)
- [Genetic Predisposition to Disease](#)